

## Buckingham Gate, London SW1E

Price £1,075 per week - Furnished











## Description

Nestled in the heart of Victoria, this elegantly furnished one-bedroom apartment occupies a prime position within The Tower at Buckingham Gate, offering sophisticated urban living with professional concierge services. The contemporary interior provides a comfortable retreat enhanced by abundant natural light and thoughtful modern appointments. The seamless lift access ensures effortless daily living, while the 24-hour concierge service delivers security and convenience that defines premium London residential living.

The apartment's well-proportioned layout maximises space and functionality, creating an inviting atmosphere perfect for professionals seeking flexibility and comfort. Premium furnishings complement the building's modern aesthetic, while large windows frame the dynamic cityscape beyond. The building's amenities cater to discerning tenants who appreciate both privacy and professional support services.

This furnished apartment offers exceptional flexibility for discerning tenants seeking premium accommodations in one of London's most strategically located postcodes, where convenience meets sophistication in perfect harmony.

Council tax band: F. Rent is payable on a monthly basis and you may be required to pay more than a month's rent in advance, depending on your circumstances. You will be required to pay a 1 week holding deposit following a successful offer. Tenancies with annual rents up to £50,000 will require a 5 weeks' security deposit, while those exceeding this threshold will require a 6 weeks' deposit. Utility bills, council tax, telephone line and broadband are not included in the rent. As well as paying the rent, you may also be required to make some additional permitted payments. If your tenancy does not qualify as an AST, additional fees may apply. Please visit [jll.co.uk/fees](http://jll.co.uk/fees) for details of fees that may be payable when renting a property. To check broadband and mobile phone coverage please visit Ofcom here [ofcom.org.uk/phones-telecoms-and-internet/advice-for-consumers/advice/ofcom-checker](http://ofcom.org.uk/phones-telecoms-and-internet/advice-for-consumers/advice/ofcom-checker)

- One double bedroom
- One bathroom
- Reception room
- Open plan kitchen
- Eighth floor
- Lift
- 24 hour concierge
- Furnished
- Approx. 637 sq ft (59 sq m)
- EPC: B

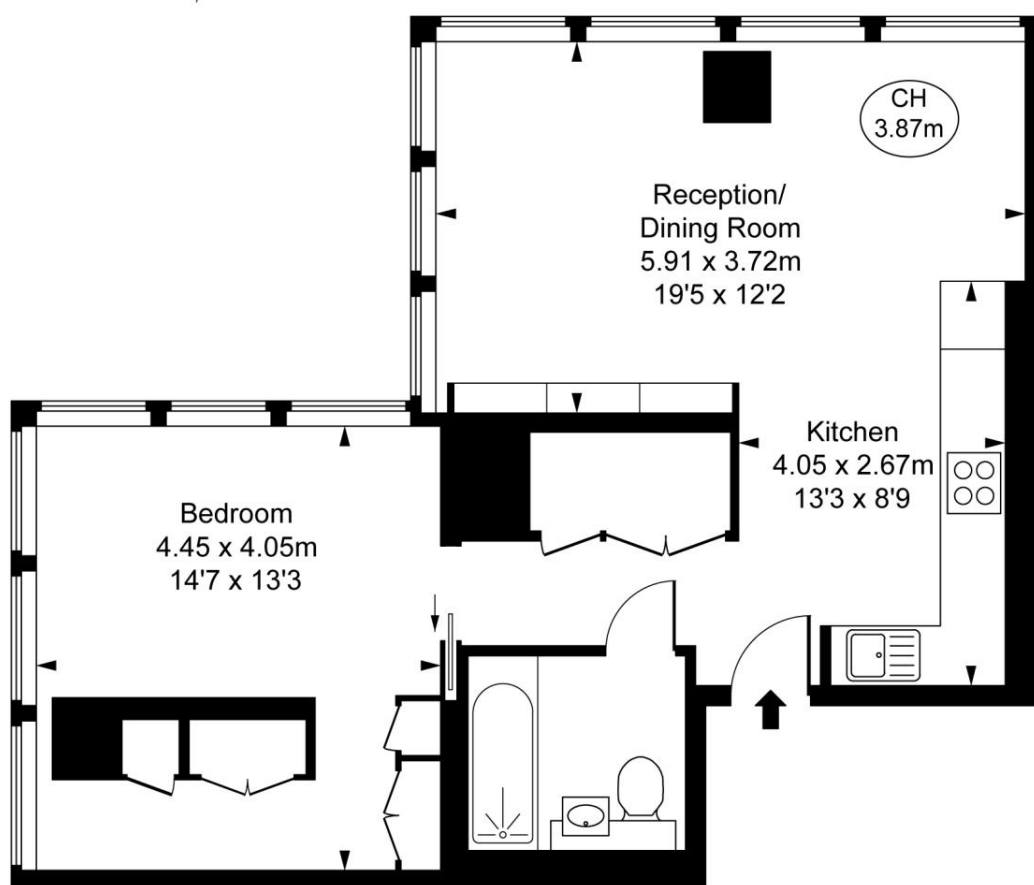
# Floorplan

637 sq ft | 59 sq m

## The Tower, Buckingham Gate, SW1E

Approximate Gross Internal Area  
59.18 sq m / 637 sq ft

( CH = Ceiling Heights )



Eighth Floor

This plan is not to scale. It is for guidance and not for valuation purposes.  
All measurements and areas are approximate only, and have been prepared in accordance with the current edition of the RICS Code of Measuring Practice.  
© Fulham Performance

Chelsea  
2 Cale Street,  
London SW3 3QU  
+4420 7399 5010  
saleschelsea@jll.com

*Urban living, your way.*

[jll.co.uk/residential](http://jll.co.uk/residential)

© 2019 Jones Lang LaSalle IP, Inc. All rights reserved. All information contained herein is from sources deemed reliable; however, no representation or warranty is made to the accuracy thereof.

