



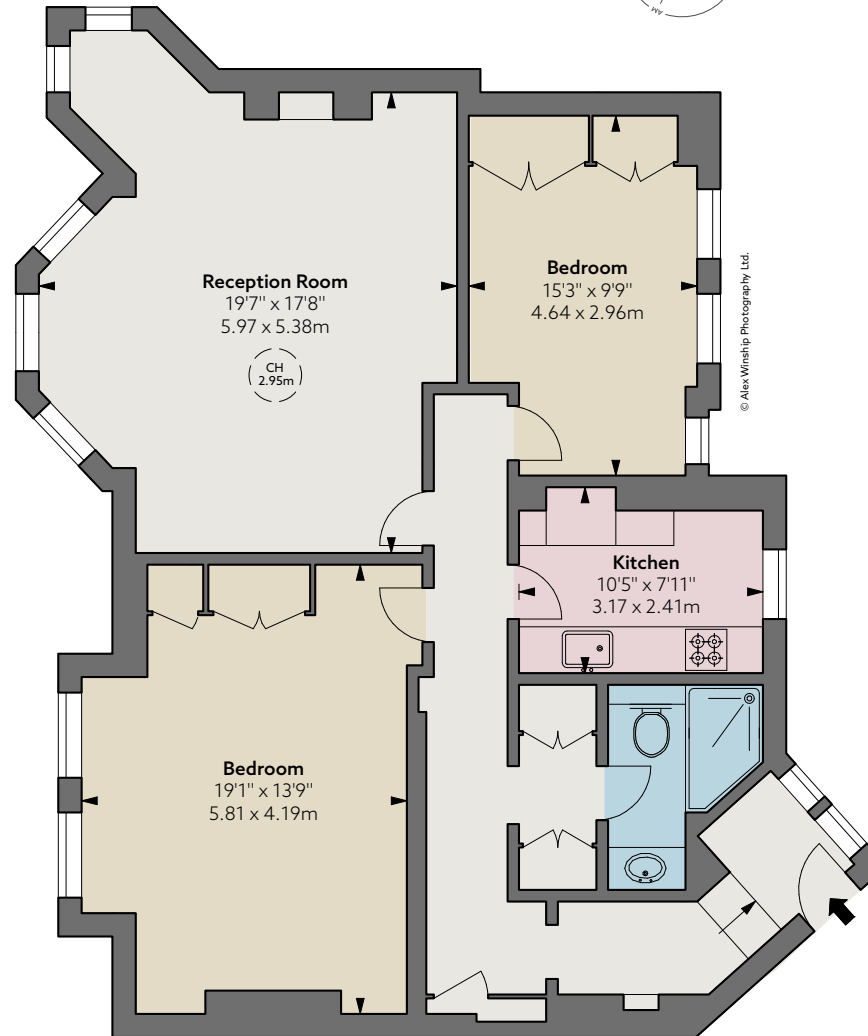
FLAT 4

21 HANS PLACE

KNIGHTSBRIDGE SW1X 0EP



Approximate Gross Internal Area
1,056 sq ft / 98.10 sq m



Third Floor

A second floor flat situated in a well-appointed period building at the southern end of Hans Place with views both over the gardens and Pont Street. Its position is enviable as it is in the heart of Knightsbridge and near to all the retail and culinary outlets that this world-class destination is so well known for.

Accommodation

- Entrance hall
- Two bedrooms
- Shower room
- Kitchen
- Reception room
- Lift
- Access to gardens
- Independent gas central heating and hot water

Guide Price £1,575,000

Tenure Leasehold 122 years
(expiring 01/12/2148)

Ground Rent Peppercorn

Service Charge Approximately
£14,218 for year ending 31/03/2026

Local Authority The Royal Borough
of Kensington & Chelsea

Council Tax Band H

EPC Rating C