

# EMBANKMENT GARDENS

LONDON SW3





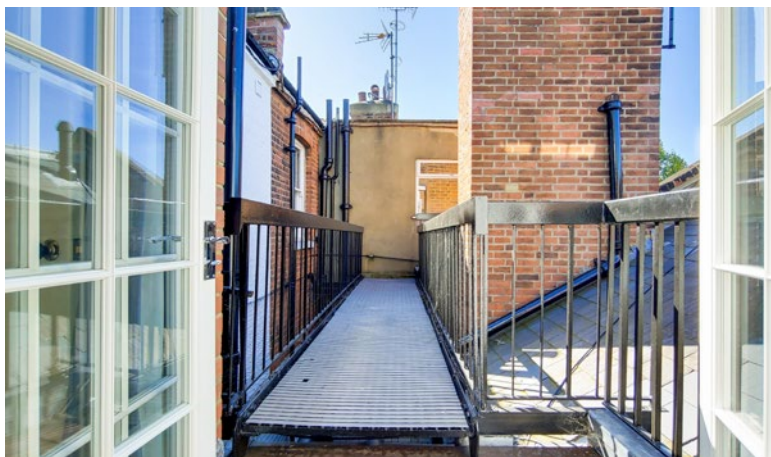
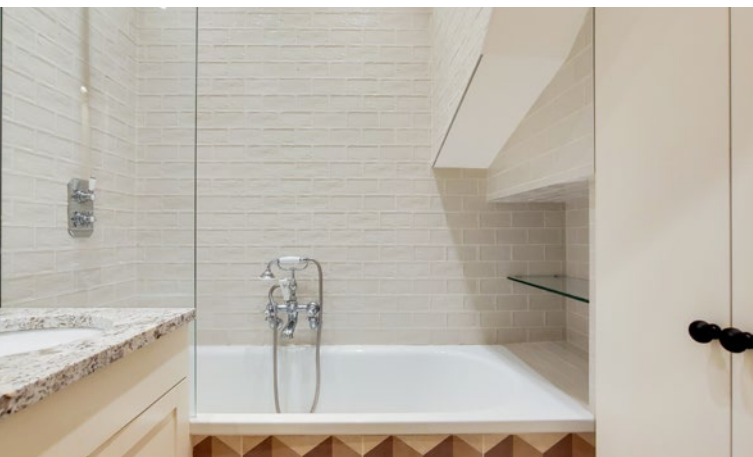


A DELIGHTFUL THIRD AND FOURTH FLOOR APARTMENT LOCATED IN A CHARMING PERIOD BUILDING OVERLOOKING THE RIVER THAMES ON EMBANKMENT GARDENS. THE PROPERTY COMPRISES TWO DOUBLE BEDROOMS, A BATHROOM PLUS SEPARATE GUEST CLOAKROOM, AND A BRIGHT RECEPTION/DINING ROOM WITH OPEN-PLAN KITCHEN. THE PROPERTY FURTHER BENEFITS FROM A TERRACE.



## FACILITIES

- 2 DOUBLE BEDROOMS
- ONE BEDROOM WITH TERRACE ACCESS
- 1 BATHROOM
- GUEST CLOAKROOM
- RECEPTION ROOM
- OPEN PLAN KITCHEN
- THIRD FLOOR
- APPROX. 502 SQ FT (46 SQ M)
- EPC: E



## TERMS

PRICE: £1,050,000

LEASE LENGTH: 125 YEARS

SERVICE CHARGE: £2,000 PER ANNUM

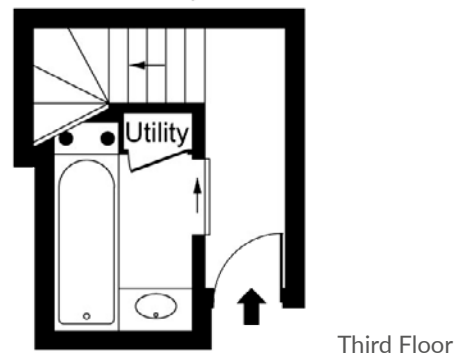
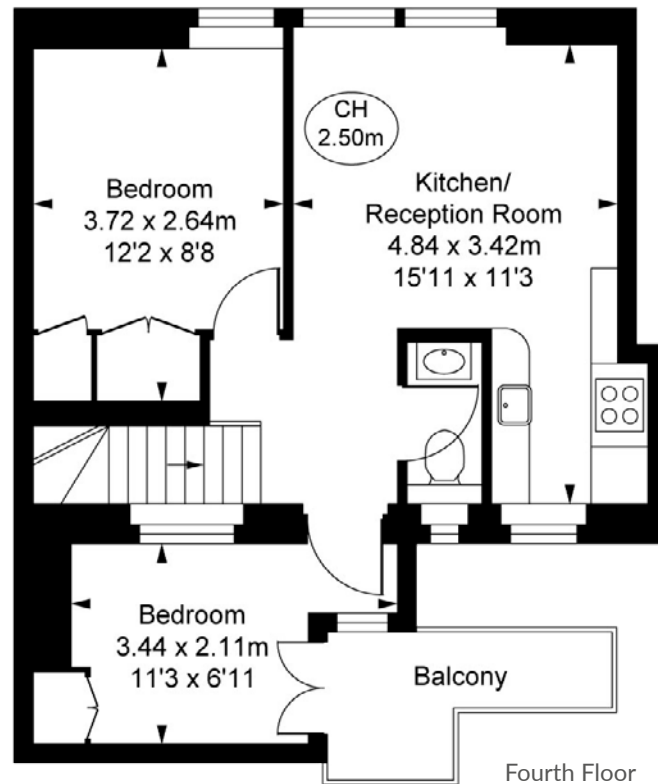
GROUND RENT: PEPPERCORN

LOCAL AUTHORITY: KENSINGTON AND  
CHELSEA LONDON

COUNCIL TAX: E

EPC: E

GROSS INTERNAL AREA (APPROX.)  
46 sq m (502 sq ft)



These particulars are for general information only and do not constitute any part of an offer or contract. All statements contained therein are made without responsibility on the part of the vendors or lessors and are not to be relied upon as statement or representation of fact. Intending purchasers or lessees must satisfy themselves, by inspection, or otherwise, as to the correctness of each of the statements or dimensions contained in these particulars.

JLL Chelsea  
2 Cale Street,  
London, SW3 3QU  
020 7399 5010

