



Sloane Avenue, London SW3

Price £550 per week - Furnished





Description

A wonderful third floor apartment (with lift) in this portered building on Sloane Avenue. The property consists of one double bedroom with en- suite bathroom, reception room and a fully fitted kitchen.

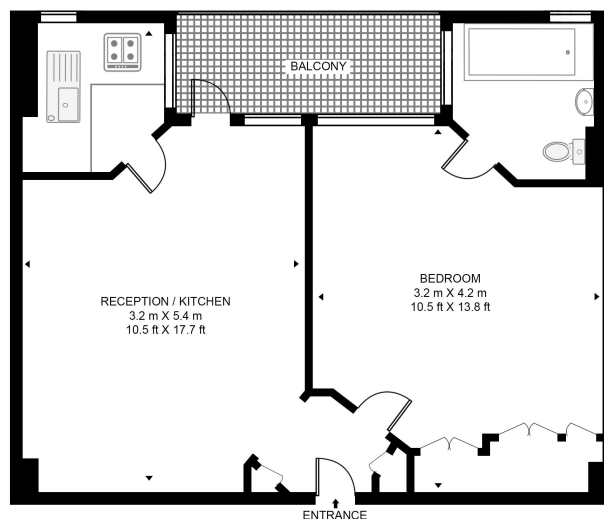
The flat is presented in excellent order and further benefits from communal heating and hot water, a balcony and 24 hour porter service. Sloane Avenue Mansions is conveniently located for Sloane Square and the many shopping and transport amenities of the King's Road.

Rent is payable on a monthly basis and you may be required to pay more than a month's rent in advance, depending on your circumstances. You will be required to pay a 1 week holding deposit following a successful offer. Utility bills, council tax, telephone line and broadband are not included in the rent. As well as paying the rent, you may also be required to make some additional permitted payments. If your tenancy does not qualify as an AST, additional fees may apply. Please visit jll.co.uk/fees for details of fees which may be payable when renting a property.

- 1 Double bedroom
- 1 Bathroom (en suite)
- Reception room
- Open plan kitchen
- Third floor
- Balcony
- Lift
- 24 Hour porter
- Approx. 332 sq ft (30 sq m)
- Furnished



SLOANE AVENUE MANSIONS, SLOANE AVENUE
APPROXIMATE GROSS INTERNAL FLOOR AREA 345 SQ.FT (32.1 SQ.M)



THIRD FLOOR



This floor plan has been defined by the RICS Code of Measurement. This floor plan and all others are for approximate representative purposes only and upon usage is agreed to as such by the client.
WWW: hdvirtualart.com | TEL: 0203.974.1567 | EMAIL: info@hdvirtualart.com

Chelsea
2 Cale Street,
London SW3 3QU
+4420 7399 5010
saleschelsea@jll.com

Urban living, your way.

jll.co.uk/residential

© 2019 Jones Lang LaSalle IP, Inc. All rights reserved. All information contained herein is from sources deemed reliable; however, no representation or warranty is made to the accuracy thereof.

