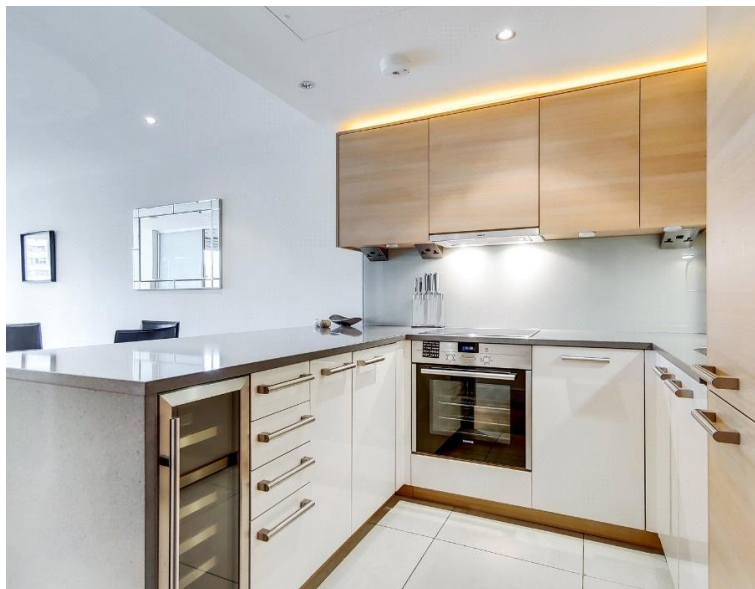




Townmead Road, London SW6

Price £450 per week - Furnished







Description

Double bedroom Manhattan style apartment in this award winning riverside location close to Fulham and West London.

Accommodation and amenities include master bedroom with en-suite, open-plan Reception room, modern fully fitted kitchen, balcony, comfort cooling, serviced by 24/7 concierge and underground parking available by separate negotiation

Excellent transport links from Imperial Wharf station and only a short walk to Fulham Broadway and Parsons Green.

Rent is payable on a monthly basis and you may be required to pay more than a month's rent in advance, depending on your circumstances. You will be required to pay a 1 week holding deposit following a successful offer. Utility bills, council tax, telephone line and broadband are not included in the rent. As well as paying the rent, you may also be required to make some additional permitted payments. If your tenancy does not qualify as an AST, additional fees may apply. Please visit jll.co.uk/fees for details of fees which may be payable when renting a property.

- 1 Bedroom
- 1 Bathroom
- Open plan
- 24 Hour concierge
- Lift and private balcony
- Approx 498 sq ft (46 sq m)
- Furnished
- EPC: B
- Council tax: Band E
- Deposit amount: £2,250.00

498 sq ft | 46 sq m

GROSS INTERNAL AREA
46.3 Sqm / 498.5 Sqft



— Fourth Floor

[illegible]