



Kings Road, London SW3

Price £1,015 per week - Furnished







Description

A refurbished second and third floor flat (no lift) in this well maintained building in the heart of Chelsea. The property consists of two double bedrooms, one bathroom, spacious reception room and a fully fitted, open plan kitchen. The flat is conveniently located for the many shopping and transport amenities of the King's Road and Sloane Square.

Rent is payable on a monthly basis and you may be required to pay more than a month's rent in advance, depending on your circumstances. You will be required to pay a 1 week holding deposit following a successful offer. Utility bills, council tax, telephone line and broadband are not included in the rent. As well as paying the rent, you may also be required to make some additional permitted payments. If your tenancy does not qualify as an AST, additional fees may apply. Please visit jll.co.uk/fees for details of fees which may be payable when renting a property.

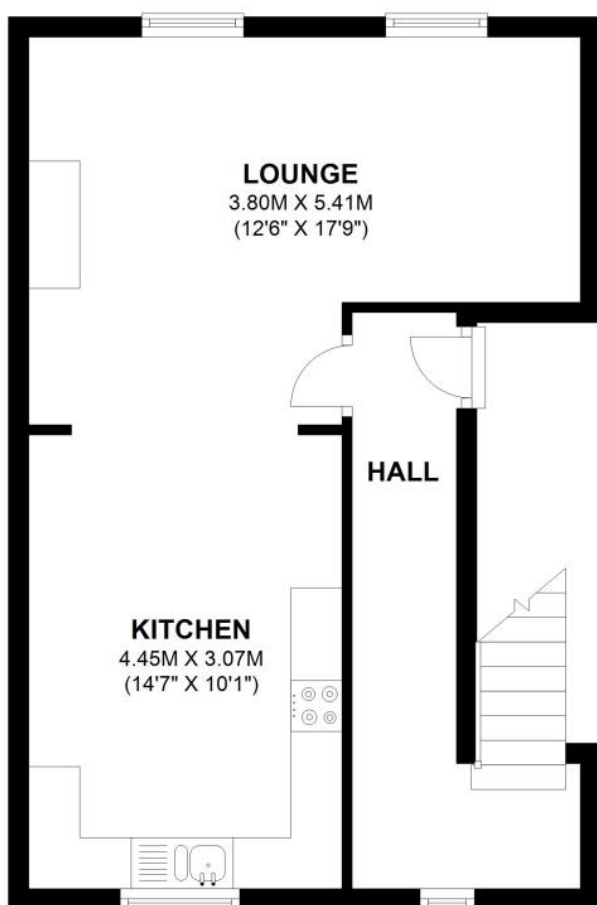
- Two double bedrooms
- Bathroom
- Reception room
- Open plan kitchen
- Second and third floor
- Approx. 840 sq ft (78 sq m)
- Furnished
- EPC: D
- Council Tax: Band to be determined
- Holding deposit: £1,015.38

Floorplan

840 sq ft | 78 sq m

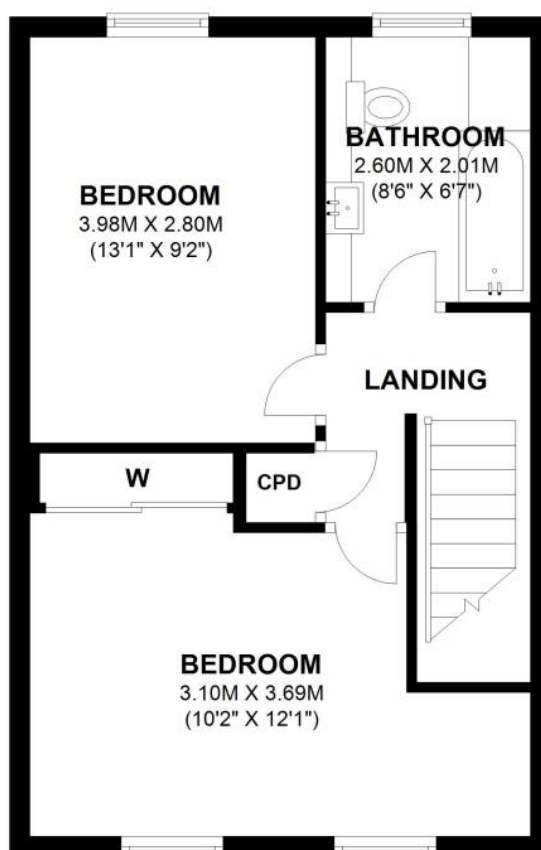
SECOND FLOOR

APPROX. 39.7 SQ. METRES (426.9 SQ. FEET)



THIRD FLOOR

APPROX. 38.4 SQ. METRES (413.5 SQ. FEET)



TOTAL AREA: APPROX. 78.1 SQ. METRES (840.4 SQ. FEET)

Chelsea
2 Cale Street,
London SW3 3QU
+4420 7399 5010
saleschelsea@jll.com

Urban living, your way.

jll.co.uk/residential

© 2019 Jones Lang LaSalle IP, Inc. All rights reserved. All information contained herein is from sources deemed reliable; however, no representation or warranty is made to the accuracy thereof.

