



Radnor Walk, London SW3

Price £2,538 per week - Unfurnished







Description

This stunning three bedroom house in Chelsea comprises of three double bedrooms, three bathrooms (two en-suites), cloak room, open plan kitchen with sitting room and reception room.

The property benefits from an excellent location close to Hyde Park, Battersea Park, Sloane Square underground station and a variety of shops and restaurants that Chelsea has to offer.

Rent is payable on a monthly basis and you may be required to pay more than a month's rent in advance, depending on your circumstances. You will be required to pay a 1 week holding deposit following a successful offer. Utility bills, council tax, telephone line and broadband are not included in the rent. As well as paying the rent, you may also be required to make some additional permitted payments. If your tenancy does not qualify as an AST, additional fees may apply. Please visit jll.co.uk/fees for details of fees which may be payable when renting a property.

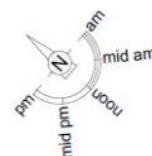
- Three Double bedrooms
- Three Bathrooms (two en-suites)
- Open plan kitchen with sitting room
- Reception room
- Ground floor, first floor and second floor
- Furnished
- Approx: 1693 sq ft (157.3 sq m)
- EPC: C
- Council tax: Band H
- Parking not included

Floorplan

1,693 sq ft | 157 sq m

Radnor Walk, SW3

Approximate Area = 1693 sq ft / 157.3 sq m
Including Limited Use Area (10sq ft / 0.9 sq m)



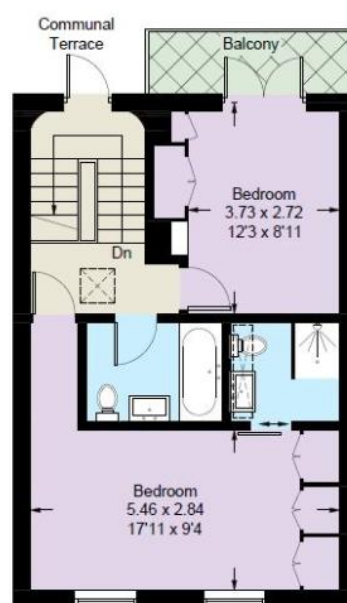
[] = Reduced head height below 1.5m



Ground Floor



First Floor



Second Floor

This plan is for layout guidance only. Not drawn to scale unless stated. Windows and door openings are approximate. Whilst every care is taken in the preparation of this plan, please check all dimensions, shapes and compass bearings before making any decisions reliant upon them. (ID1148281)

Chelsea
2 Cale Street,
London SW3 3QU
+4420 7399 5010
saleschelsea@jll.com

Urban living, your way.

jll.co.uk/residential

© 2019 Jones Lang LaSalle IP, Inc. All rights reserved. All information contained herein is from sources deemed reliable; however, no representation or warranty is made to the accuracy thereof.

