



ELVASTON PLACE | SOUTH KENSINGTON SW7



THIS ELEGANT TWO-BEDROOM APARTMENT IN ELVASTON PLACE, SOUTH KENSINGTON, OFFERS A PRIME LOCATION AND MODERN LIVING SPACE.







The property features a principal bedroom, a second bedroom/study, a bathroom, and an open-plan kitchen/reception room with views over Gore Street. Recently refurbished, the apartment is presented in immaculate condition.

This property combines modern comfort with the charm of South Kensington, making it an ideal home for those seeking a luxurious lifestyle in one of London's most sought-after neighbourhoods.

Elvaston Place is a highly desirable residential street, in the heart of South Kensington, known for its Victorian architecture and vibrant atmosphere.

The apartment's location provides easy access to Hyde Park, just a 9-minute walk away. Residents can enjoy the park's numerous trails for running or leisure activities. Additionally, the area boasts world-renowned shopping experiences, including Harrods and Harvey Nichols in nearby Knightsbridge.

#### ACCOMMODATION

Bedroom | Bathroom | Reception Room  
Kitchen | Study/Second bedroom | Lift

#### TERMS

**Price:** £1,375,000

**Tenure:** Leasehold, 100 years (expires 25th December 2125)

**Service Charge:** £4,200 Per annum

**Ground rent:** Peppercorn

**Local Authority:** Royal Borough of Kensington & Chelsea

**Council tax:** F

**EPC:** D





# Gross Internal Area (Approx.)

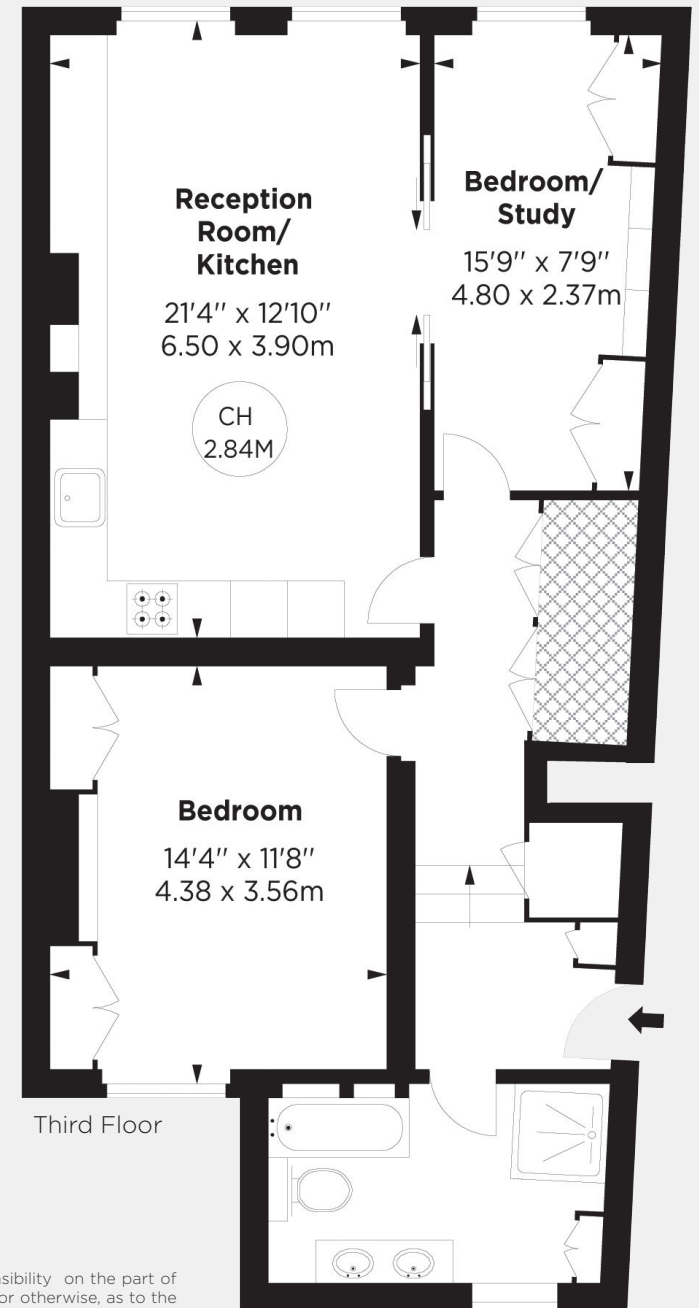
75.27 sq.m. (810 sq.ft.)

Including under 1.5m area

Key :

CH - Ceiling Height

 - Under 1.5m



JLL Knightsbridge  
174 Brompton Road,  
London, SW3 1HP  
020 7306 1610



These particulars are for general information only and do not constitute any part of an offer or contract. All statements contained therein are made without responsibility on the part of the vendors or lessors and are not to be relied upon as statement or representation of fact. Intending purchasers or lessees must satisfy themselves, by inspection, or otherwise, as to the correctness of each of the statements or dimensions contained in these particulars.