



## Alba Square, London SW1W

Price £920 per week - Furnished







## Description

This beautiful two-bedroom apartment is one of the first apartments available to rent in this newly launched Ebury development. The flat includes two spacious bedrooms, and one family sized bathroom. It further comprises a stunning open plan kitchen and living room with a spacious private balcony.

The development is incredibly secure with a 24-hours concierge and security service. It further offers an incredibly residents lounge, with huge outdoor terrace, two meetings rooms and a rooftop garden on the 12th floor.

Rent is payable on a monthly basis and you may be required to pay more than a month's rent in advance, depending on your circumstances. You will be required to pay a 1 week holding deposit following a successful offer. Utility bills, council tax, telephone line and broadband are not included in the rent. As well as paying the rent, you may also be required to make some additional permitted payments. If your tenancy does not qualify as an AST, additional fees may apply. Please visit [jll.co.uk/fees](http://jll.co.uk/fees) for details of fees which may be payable when renting a property.

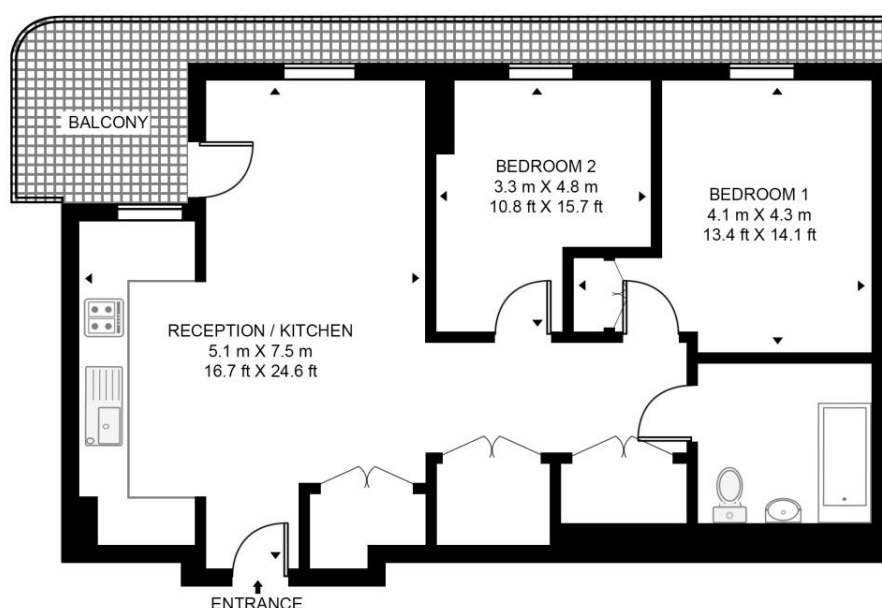
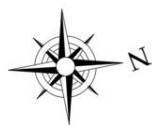
- Open plan reception
- Fully fitted kitchen
- Two bedrooms
- One bathroom
- Private balcony
- 24 hour concierge
- Residents' lounge
- 2 meeting rooms
- Rooftop garden
- EPC: B

# Floorplan

805 sq ft | 75 sq m

## SUTHERLAND APARTMENTS, ALBA SQUARE

APPROXIMATE GROSS INTERNAL FLOOR AREA 805 SQ.FT (74.8 SQ.M)



FOURTH FLOOR



**HDVA**

This floor plan has been defined by the RICS Code of Measurement. This floor plan and all others are for approximate representative purposes only and upon usage is agreed to as such by the client.

WWW: [hdvirtualart.com](http://hdvirtualart.com) | TEL: 0203.974.1567 | EMAIL: [info@hdvirtualart.com](mailto:info@hdvirtualart.com)

Chelsea  
2 Cale Street,  
London SW3 3QU  
+4420 7399 5010  
[saleschelsea@jll.com](mailto:saleschelsea@jll.com)

*Urban living, your way.*

[jll.co.uk/residential](http://jll.co.uk/residential)

© 2019 Jones Lang LaSalle IP, Inc. All rights reserved. All information contained herein is from sources deemed reliable; however, no representation or warranty is made to the accuracy thereof.

