



ELYSTAN STREET
LONDON SW3



ELYSTAN STREET LONDON SW3

THIS SECURE, NATURALLY BRIGHT TWO-BEDROOM APARTMENT IS ON THE SECOND FLOOR OF THIS INCREDIBLY POPULAR PRIVATE GATED DEVELOPMENT, JUST OFF CHELSEA GREEN.

Residents enjoy access to exceptional amenities, including communal gardens, a gym, sauna, and swimming pool, as well as the convenience of secure underground parking and a 24-hour concierge.

Crown Lodge boasts beautifully maintained communal gardens, complete with a Koi Pond and a picturesque Wisteria walkway.





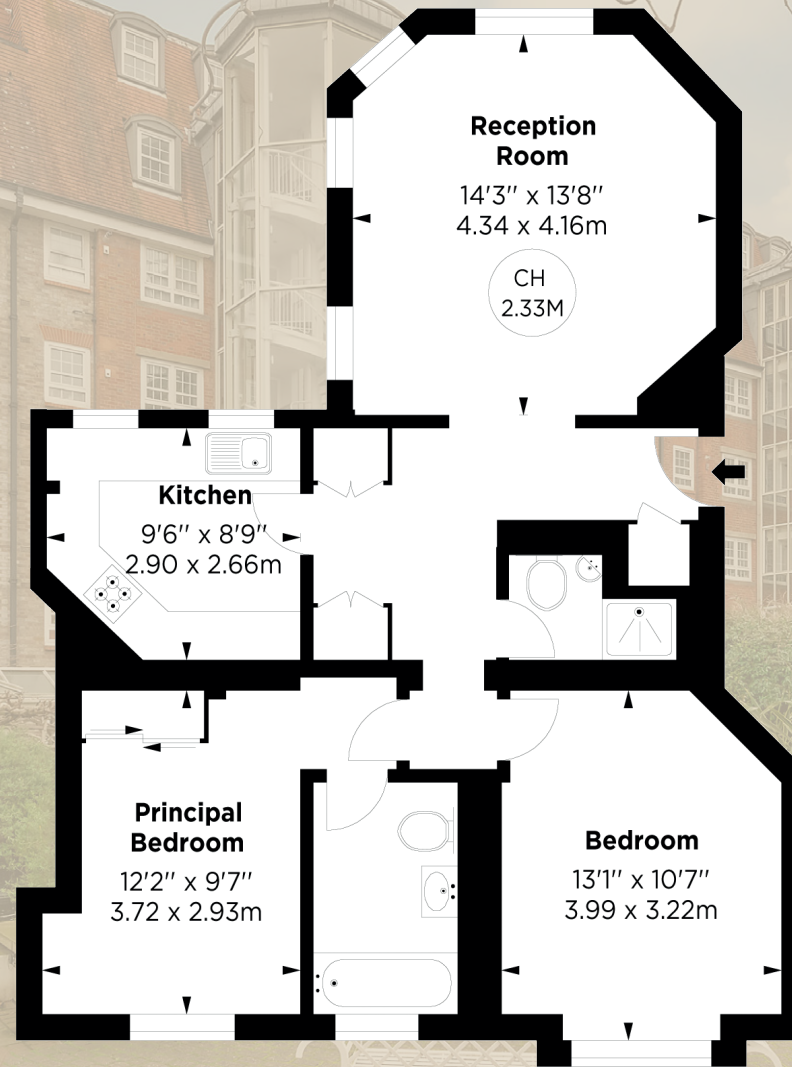
LOCATION

Chelsea Green is charming. Its combination of accessibility, charming boutiques, and diverse dining options make it an attractive destination for those looking to experience the best of Chelsea and London. It is also a short walk from South Kensington Underground Station, making it easily accessible for both locals and visitors.

FACILITIES

Communal Garden | Underground Parking | Swimming Pool | Gym | 24hr concierge

GROSS INTERNAL AREA (APPROX.)
69.15 SQ M / 744 SQ FT



SECOND FLOOR

Price: **£1,150,000** | Lease length: **962 years expires 1st of April 1987** | Service charge: **£8,632 Per annum**
Ground rent: **Peppercorn** | Local Authority: **Kensington and Chelsea London** | Council tax: **G** | EPC: **C**

These particulars are for general information only and do not constitute any part of an offer or contract. All statements contained therein are made without responsibility on the part of the vendors or lessors and are not to be relied upon as statement or representation of fact. Intending purchasers or lessees must satisfy themselves, by inspection, or otherwise, as to the correctness of each of the statements or dimensions contained in these particulars.

JLL Knightsbridge
174 Brompton Road,
London, SW3 1HP
020 7306 1610

