

Alba Square, London SW1W

Price £920 per week - Unfurnished







Description

This beautiful two-bedroom apartment is one of the first apartments available to rent in this newly launched Ebury development. The flat includes two spacious bedrooms, with one en-suite bathroom and one family sized bathroom. It further comprises a stunning open plan kitchen and living room with a spacious private balcony.

The development is incredibly secure with a 24-hours concierge and security service. It further offers an incredibly residents lounge, with huge outdoor terrace, two meetings rooms and a rooftop garden on the 12th floor.

Ebury Place is centrally located and conveniently positioned between Victoria, Pimlico and Sloane Square tube stations, benefiting from the excellent transport links across central and wider London. It is within walking distance of the River Thames, Knightsbridge and Battersea Park.

Rent is payable on a monthly basis and you may be required to pay more than a month's rent in advance, depending on your circumstances. You will be required to pay a 1 week holding deposit following a successful offer. Utility bills, council tax, telephone line and broadband are not included in the rent. As well as paying the rent, you may also be required to make som

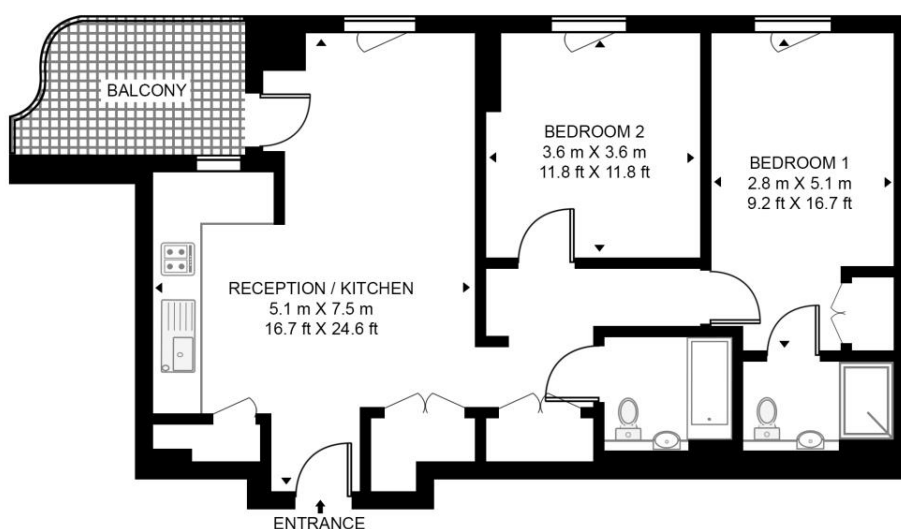
- Open plan reception
- Fully fitted kitchen
- Two bedrooms
- Two bathrooms (one en suite)
- Private balcony
- 24 hour concierge
- Residents' lounge
- 2 meeting rooms
- Rooftop garden
- EPC: B

Floorplan

814 sq ft | 76 sq m

SUTHERLAND APARTMENTS, ALBA SQUARE

APPROXIMATE GROSS INTERNAL FLOOR AREA 814 SQ.FT (75.6 SQ.M)



THIRD FLOOR



This floor plan has been defined by the RICS Code of Measurement. This floor plan and all others are for approximate representative purposes only and upon usage is agreed to as such by the client.
WWW: hdvirtualart.com | TEL: 0203.974.1567 | EMAIL: info@hdvirtualart.com

Chelsea
2 Cale Street,
London SW3 3QU
+4420 7399 5010
saleschelsea@jll.com

Urban living, your way.

jll.co.uk/residential

© 2019 Jones Lang LaSalle IP, Inc. All rights reserved. All information contained herein is from sources deemed reliable; however, no representation or warranty is made to the accuracy thereof.

