

CADOGAN GARDENS

LONDON SW3





ORIGINALLY INTERIOR-
DESIGNED BY THE LATE HELEN
GREEN, THIS WONDERFUL
2ND-FLOOR PROPERTY WITH A
BALCONY (AND LIFT ACCESS),
IS LOCATED WITHIN THIS
VERY WELL-RUN BUILDING IN
CADOGAN GARDENS, ONLY
MOMENTS FROM SLOANE
SQUARE AND THE KINGS ROAD.

The property is presented in immaculate condition and has a unique triple-aspect position, ensuring plenty of light and pleasant views throughout the majority of the property. The living space has superb volume with high ceilings and is a great room for entertaining. However, it would also make a superb home or convenient pied-a-terre. The property further benefits from lots of practical built-in storage solutions in the bedrooms and a Bulthaup kitchen, further adding appeal to this delightful property.





Cadogan Gardens is perfectly positioned close to Sloane Square underground station and The Kings Road, with all the world-renowned amenities on the doorstep. Knightsbridge, Belgravia, and the river Thames are also close by, offering additional amenities and pleasant village-like atmospheres.

- Lift
- Leasehold (118 years)
- RBKC Residents Permit
- Balcony
- Service charge - £3,123 Per Quarter
- Very well-run building
- Newly refurbished communal areas
- External decoration/works currently taking place
- Tax Band - G
- EPC - D
- 980 sqft / 91 sq m

TERMS

Guide Price

£2,458,000

Tenure

Leasehold

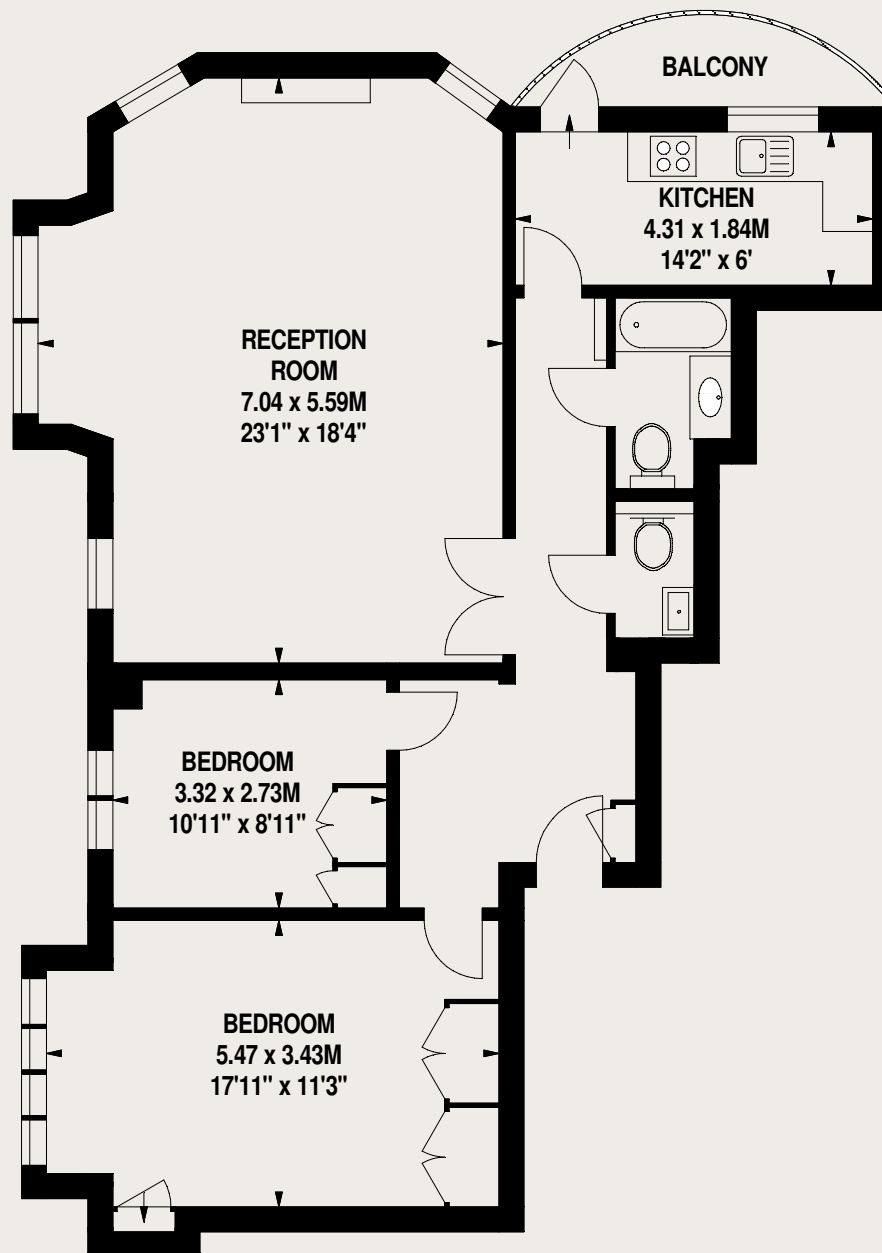
Local Authority

Kensington and Chelsea London



GROSS INTERNAL AREA (APPROX.)

91 sq m (980 sq ft)



JLL Kensington
387 Kensington High Street
London, W14 8QA

020 7087 5696

These particulars are for general information only and do not constitute any part of an offer or contract. All statements contained therein are made without responsibility on the part of the vendors or lessors and are not to be relied upon as statement or representation of fact. Intending purchasers or lessees must satisfy themselves, by inspection, or otherwise, as to the correctness of each of the statements or dimensions contained in these particulars.