

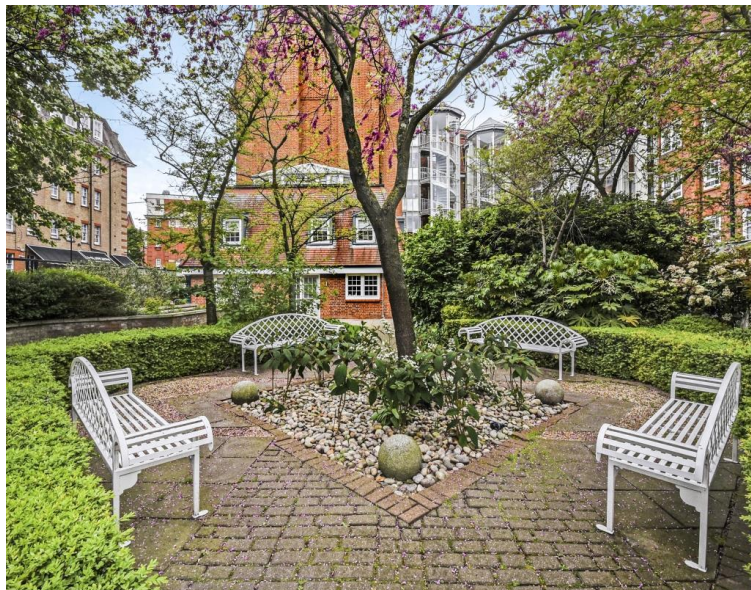


Elystan Street, London SW3

Price £875 per week - Furnished







Description

A wonderful third floor apartment (with lift) in this well run development quietly located off Chelsea Green and just five minutes' walk from the King's Road. The property consists of one master bedroom with en suite bathroom, a second bedroom with en suite shower room, reception room and a fitted kitchen. Further benefits include 24 hour portorage, use of the swimming pool and gym and landscaped gardens.

Rent is payable on a monthly basis and you may be required to pay more than a month's rent in advance, depending on your circumstances. You will be required to pay a 1 week holding deposit following a successful offer. Utility bills, council tax, telephone line and broadband are not included in the rent. As well as paying the rent, you may also be required to make some additional permitted payments. If your tenancy does not qualify as an AST, additional fees may apply. Please visit jll.co.uk/fees for details of fees which may be payable when renting a property.

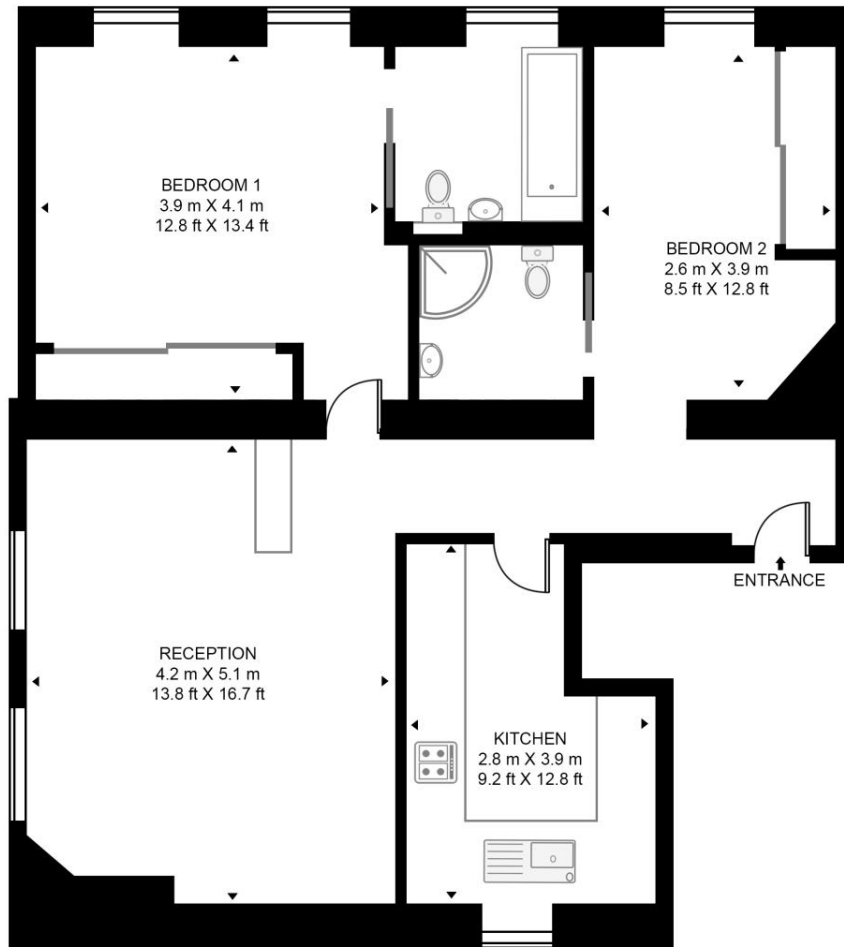
- 2 Double bedrooms
- 1 Bathroom (en suite)
- 1 Shower room (en suite)
- Reception room
- Fitted kitchen
- Third floor
- Lift
- 24 Hour concierge
- Use of swimming pool & gym
- Communal gardens

Floorplan

798 sq ft | 74 sq m

CROWN LODGE, 12 ELYSTAN STREET

APPROXIMATE GROSS INTERNAL FLOOR AREA 798 SQ.FT (74.1 SQ.M)



THIRD FLOOR



This floor plan has been defined by the RICS Code of Measurement. This floor plan and all others are for approximate representative purposes only and upon usage is agreed to as such by the client.

WWW: hdvirtualart.com | TEL: 0203.974.1567 | EMAIL: info@hdvirtualart.com

Chelsea
2 Cale Street,
London SW3 3QU
+4420 7399 5010
saleschelsea@jll.com

Urban living, your way.

jll.co.uk/residential

© 2019 Jones Lang LaSalle IP, Inc. All rights reserved. All information contained herein is from sources deemed reliable; however, no representation or warranty is made to the accuracy thereof.

