



3 Arundel Court

JUBILEE PLACE, CHELSEA SW3 3TJ



A comfortable west-facing pied-à-terre situated on the first floor of this well known small 1930s block of flats with a caretaker. It is located at the northern end of Jubilee Place on the corner with Chelsea Green. A popular destination having a range of popular shops and restaurants together with a central open space which has recently been relandscaped.

Accommodation

- Bedroom
- Shower room
- Kitchen
- Entrance hall
- Reception room
- Lift
- Resident caretaker
- Communal central heating and hot water

Guide Price £880,000

Tenure Leasehold, 125 years

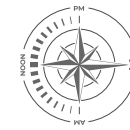
Ground Rent Peppercorn

Service Charge 6.21% of yearly outgoings, £7,876 for the year ending 24/3/24 plus £2,173.50 into the reserve fund

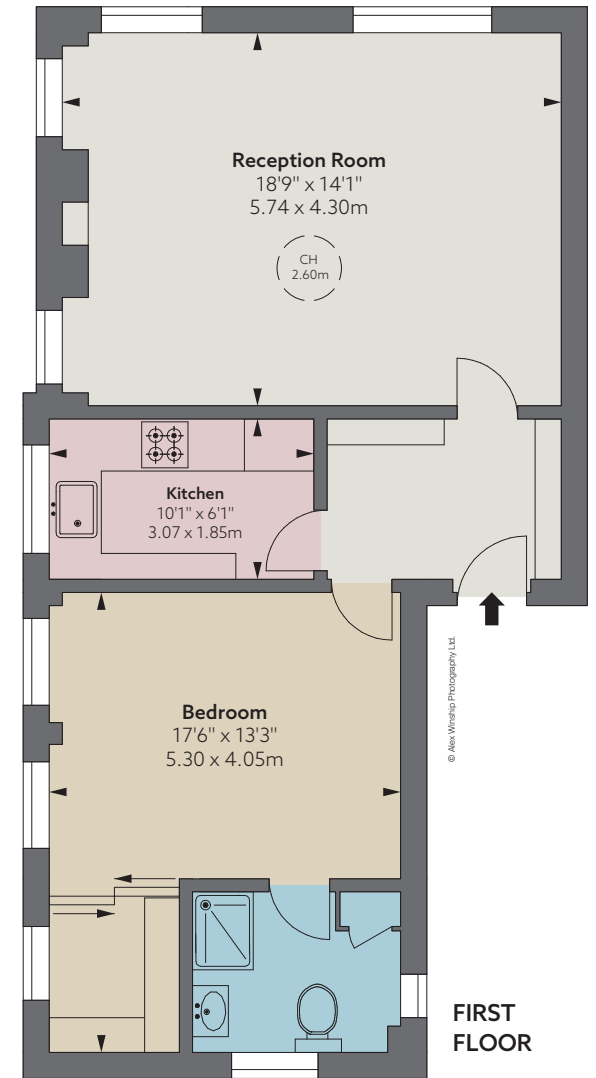
Local Authority The Royal Borough of Kensington & Chelsea

Council Tax Band E

EPC Rating D



Approximate Gross
Internal Area
631 sq ft
58.62 sq m



Floorplan for guidance only, not to scale or valuations purposes. It must not be relied upon as a statement of fact. All measurements and areas are approximate and have been prepared in accordance with the current edition of the RICS Code of Measuring Practice.

These particulars are for general information only and do not constitute any part of an offer or contract. All statements contained therein are made without responsibility on the part of the vendors or lessors and are not to be relied upon as statement or representation of fact. Intending purchasers or lessees must satisfy themselves, by inspection, or otherwise, as to the correctness of each of the statements or dimensions contained in these particulars. This floorplan is for guidance only and not for valuation purposes. 11/07/24 JLL-240319C-03-MS

Savills Knightsbridge
knightsbridge_sales@savills.com
020 7581 5234

Savills Sloane Street
sloanestreet@savills.com
020 7730 0822

savills.co.uk

JLL Knightsbridge
knightsbridge@eu.jll.com | 020 7306 1600

JLL Chelsea
chelsea@eu.jll.com | 020 7399 5010

jll.co.uk/residential