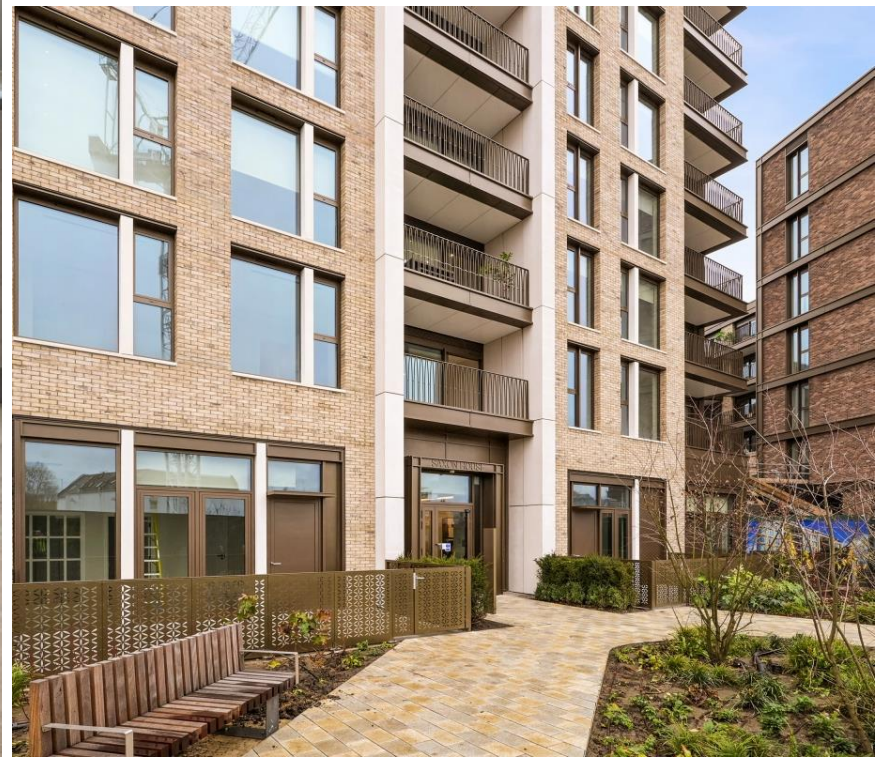
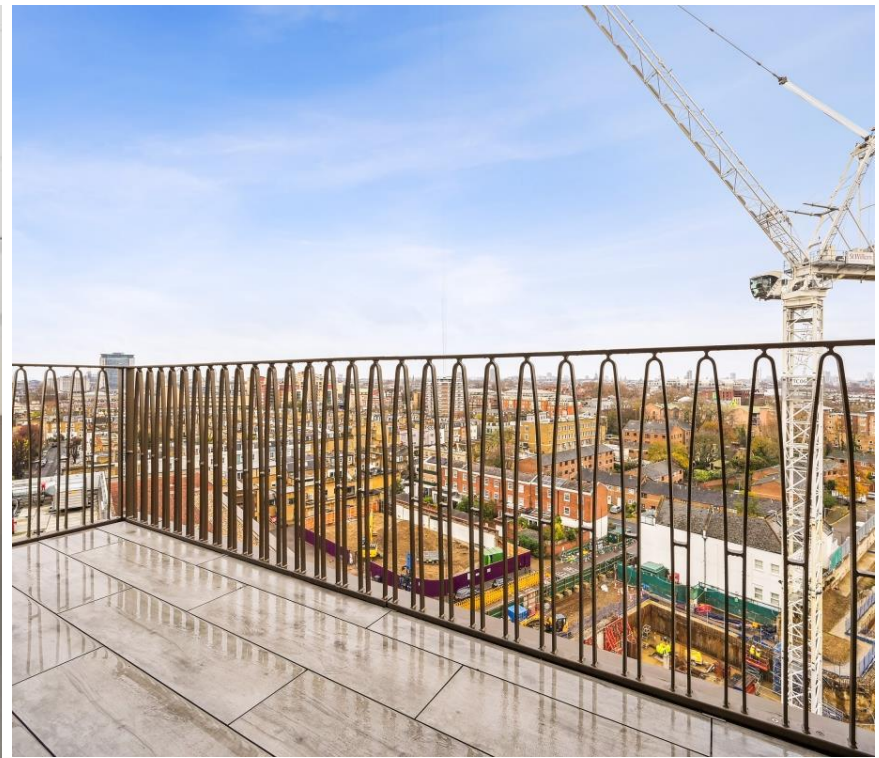




Parkland Walk, London SW6

Price £950 per week - Unfurnished





Description

This stunning apartment comprises two double bedrooms with large fitted wardrobes, luxury bathrooms, fully fitted kitchen with Miele appliances, spacious reception room and large balcony with stunning Westerly views towards Stamford Bridge stadium.

The development boasts fantastic on site amenities which include 24 hour concierge, swimming pool, gymnasium, 2 x cinema rooms, private kitchen area, games room and capacious residents' lounge.

Rent is payable on a monthly basis and you may be required to pay more than a month's rent in advance, depending on your circumstances. You will be required to pay a 1 week holding deposit following a successful offer. Utility bills, council tax, telephone line and broadband are not included in the rent. As well as paying the rent, you may also be required to make some additional permitted payments. If your tenancy does not qualify as an AST, additional fees may apply. Please visit jll.co.uk/fees for details of fees which may be payable when renting a property.

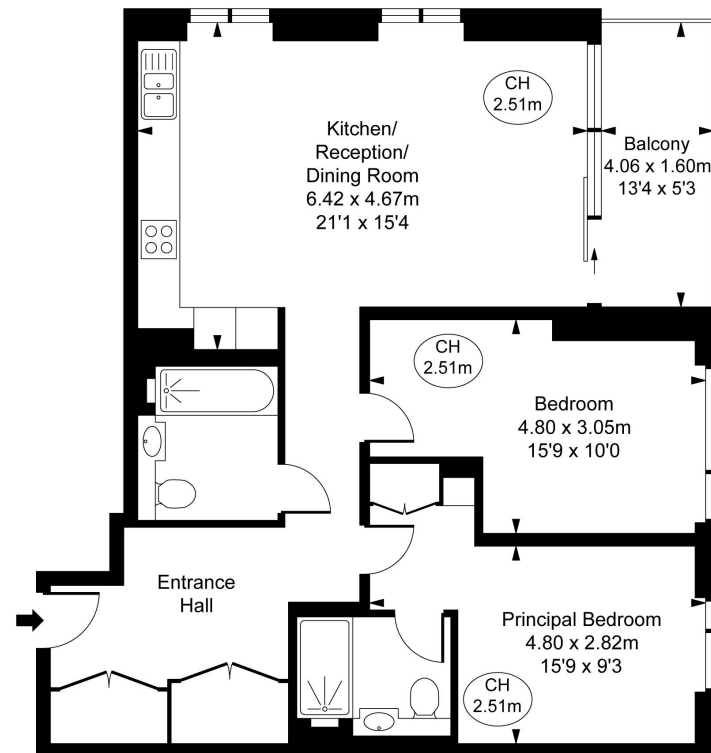
- 25m swimming pool
- Vitality pool
- Steam and sauna rooms
- Golf simulator
- Games room
- Gymnasium
- Fitness studios
- Treatment rooms
- 24 hour concierge
- Private dining room



Saxon House,
Parkland Walk, SW6
Approximate Gross Internal Area
77.49 sq m / 834 sq ft



(CH = Ceiling Heights)



Ninth Floor

This plan is not to scale. It is for guidance and not for valuation purposes.
All measurements and areas are approximate only, and have been prepared in accordance with the current edition of the RICS Code of Measuring Practice.
© Fulham Performance

Chelsea
2 Cale Street,
London SW3 3QU
+4420 7399 5010
saleschelsea@jll.com

Urban living, your way.

jll.co.uk/residential

© 2019 Jones Lang LaSalle IP, Inc. All rights reserved. All information contained herein is from sources deemed reliable; however, no representation or warranty is made to the accuracy thereof.

