



FLAT 1 • 6 LOWER SLOANE STREET • CHELSEA SW1 8BJ



An extremely comfortable pied-à-terre situated on the lower ground floor of a handsome terracotta clad period house and located at the northern end of Lower Sloane Street, near to Sloane Square. It has the added benefit of a private west-facing patio.

- Bedroom
- Dressing area
- Bathroom en-suite
- Entrance hall
- Cloakroom
- Kitchen
- Reception room
- Independent gas central heating and hot water
- Lift

Guide Price: £925,000

Tenure: Leasehold 125 years

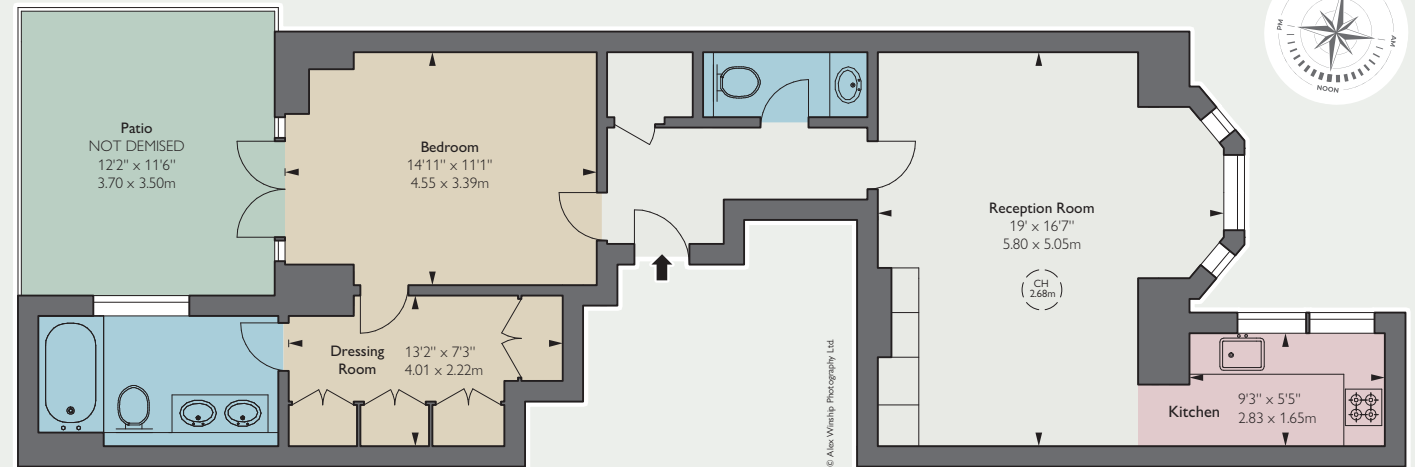
Ground Rent: Peppercorn

Service Charge: £6,018 for year ending 31/12/23 including reserve fund

Local Authority: The Royal Borough of Kensington & Chelsea

Council Tax: Band G

EPC: Rating C



LOWER GROUND FLOOR

Approximate Gross Internal Area

756 sq ft / 70.24 sq m