



## Yabsley Street, London E14

Price £510 per week - Furnished









## Description

This brilliant one bedroom apartment situated on the 10th floor boasts breath-taking north facing views from a private balcony. The property offers modern living space throughout.

The kitchen benefits from stone work tops, high gloss white kitchen units and fully integrated appliances. The designer bathrooms are made with Villeroy & Bosh bathroom suites, bespoke built in storage and large vanity mirror and tower rails. The property is furnished throughout. The development itself features an onsite concierge service and gymnasium.

The development is within a short walking distance of Blackwall DLR, Thames Clipper Boat Service and Canary Wharf Jubilee Line with excellent transport links.

We understand that cooling / heating is delivered via a communal system for which separate charges apply.

Rent: £510 per week

EPC: B

Council tax band: E

Rent is payable on a monthly basis and you may be required to pay more than a month's rent in advance, depending on your ci

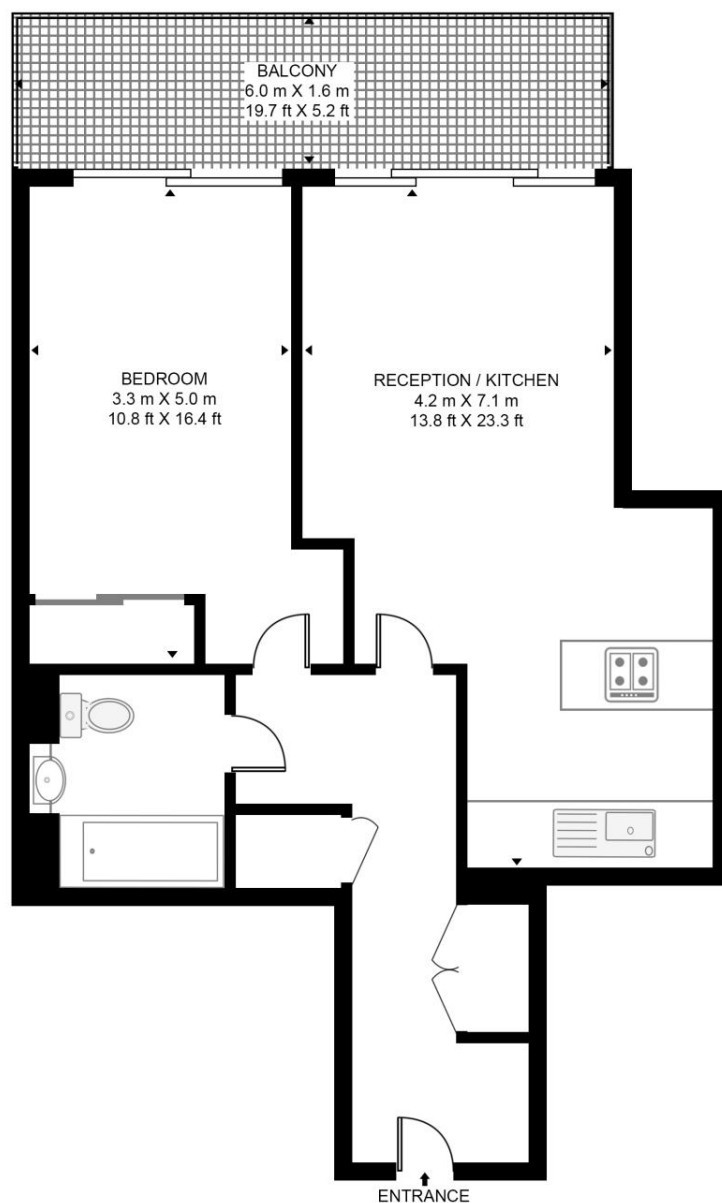
- Gym
- Concierge
- Blackwall DLR - 0.3 mile
- Approx. 561 sq ft (52 sq m)
- Deposit: 2524.99

# Floorplan

538 sq ft | 50 sq m

## HORIZONS TOWER

APPROXIMATE GROSS INTERNAL FLOOR AREA 538 SQ.FT (50 SQ.M)



TENTH FLOOR

**HDVA**

This floor plan has been defined by the RICS Code of Measurement. This floor plan and all others are for approximate representative purposes only and upon usage is agreed to as such by the client.

WWW: [hdvirtualart.com](http://hdvirtualart.com) | TEL: 0203.974.1567 | EMAIL: [info@hdvirtualart.com](mailto:info@hdvirtualart.com)

Canary Wharf  
11 Westferry Circus,  
London E14 4HE  
+4420 7715 9700  
[Lettingscanarywharf@eu.jll.co](mailto:Lettingscanarywharf@eu.jll.co)

*Urban living, your way.*

[jll.co.uk/residential](http://jll.co.uk/residential)

© 2019 Jones Lang LaSalle IP, Inc. All rights reserved. All information contained herein is from sources deemed reliable; however, no representation or warranty is made to the accuracy thereof.

