



## Landmark East, London E14

Guide price £750,000 Leasehold





# Description

This spacious two bedroom, two bathroom apartment in the sought after Landmark East Tower, offers views towards the Dock and Canary Wharf.

The accommodation has been finished to a high specification with floor to ceiling panoramic windows, comfort cooling, contemporary bathrooms and fixtures/fittings by quality respected brands including Villeroy & Bosch, Grohe and Siemens.

The development itself features 24 hour concierge, and residents' private gym.

The Landmark East Tower is a superb, luxury residential skyscraper, situated only 5 minutes walk away from Canary Wharf's vibrant heart, and only moments walk to Heron Quay DLR and Canary Wharf Jubilee Line, DLR and Elizabeth Line.

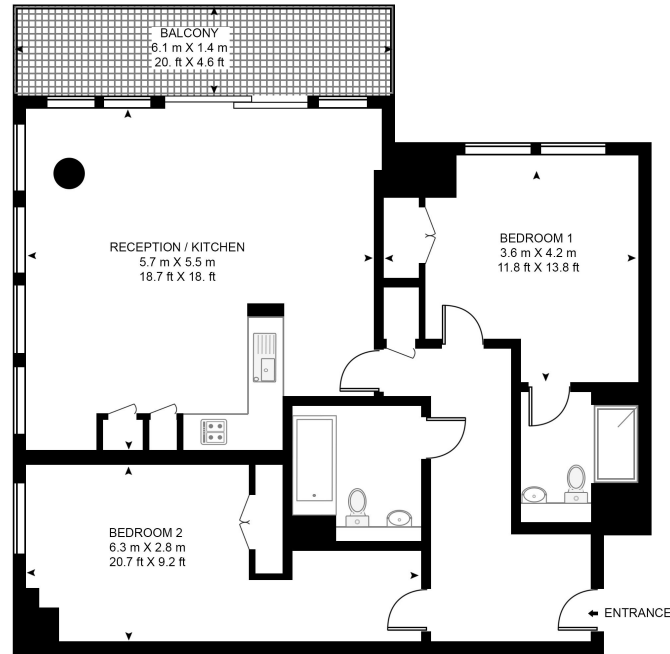
Video Tour Available!

- Amazing views of Canary Wharf & Dock
- Partial City Views
- Balcony
- 17th floor
- Approx. 866 sq ft (80.5 sq m)
- 24 Hour concierge
- Residents Gym
- Heron Quays DLR (0.3 mile)
- Canary wharf Jubilee Line 0.3 miles
- 999 year lease from 2009



## LANDMARK EAST

APPROXIMATE GROSS INTERNAL FLOOR AREA 866 SQ.FT (80.5 SQ.M)



## SEVENTEENTH FLOOR



This floor plan has been defined by the RICS Code of Measurement. This floor plan and all others are for approximate representative purposes only and upon usage is agreed to as such by the client.  
WWW: [hdvirtualart.com](http://hdvirtualart.com) | TEL: 0203 974 1567 | EMAIL: [info@hdvirtualart.com](mailto:info@hdvirtualart.com)

Canary Wharf  
11 Westferry Circus,  
London E14 4HE  
+4420 7715 9700  
[Lettingscanarywharf@eu.jll.co](mailto:Lettingscanarywharf@eu.jll.co)

*Urban living, your way.*

[jll.co.uk/residential](http://jll.co.uk/residential)

© 2019 Jones Lang LaSalle IP, Inc. All rights reserved. All information contained herein is from sources deemed reliable; however, no representation or warranty is made to the accuracy thereof.

