



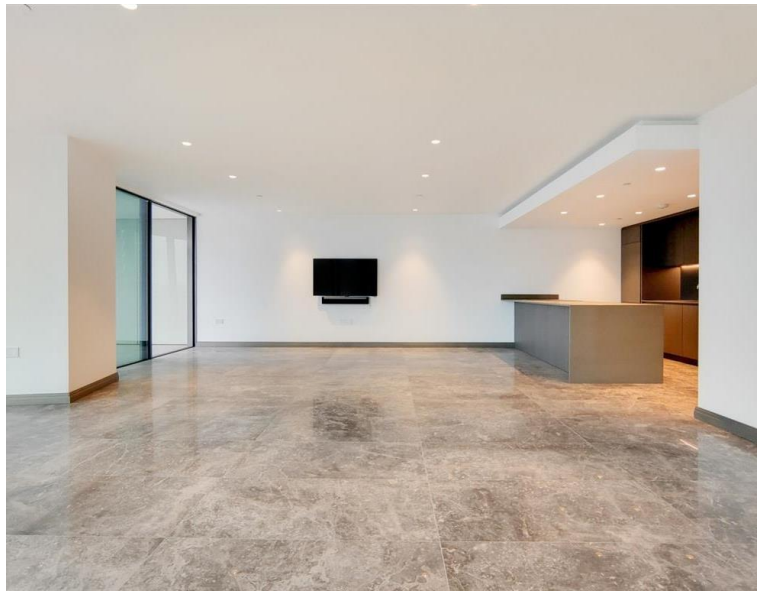
# Blackfairs Road, London SE1

Guide price £2,350,000 Leasehold









## Description

This stunning 2 bedroom apartment comprises of approx. 1,645 sq ft including 2 bedrooms, open plan kitchen, reception room, 2 bathrooms and further benefitting from a large sky garden.

Residents will benefit from access to facilities including a 24 hour concierge, executive lounge, spa, fitness suite, screening room and wine cellar.

The location of One Blackfriars provides excellent access to all parts of London. Transport links including City Thames link, Blackfriars, Southwark and Waterloo are readily available providing access throughout the City.

Early viewings are highly recommended.

- 2 Bedrooms
- 2 Bathrooms
- Sky garden
- Fitness suite
- Golf stimulator & screening room
- 0.4 mile from London Waterloo East station
- Approx. 1,645 sq ft (152 sq m)
- Leasehold
- EPC: B



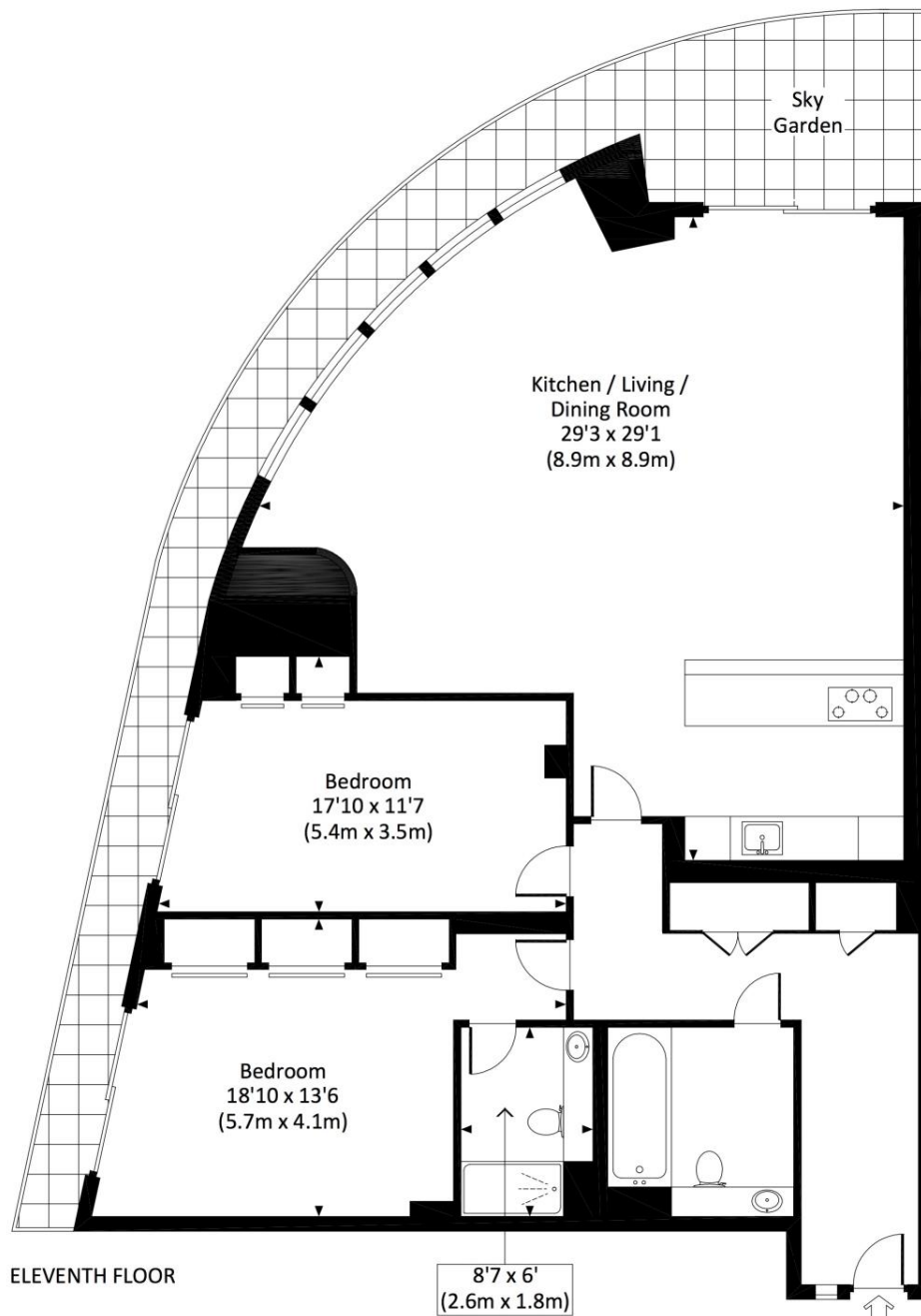
# Floorplan

1,435 sq ft | 133 sq m

## ONE BLACKFRIARS, SE1

Approx. gross internal area

1435 Sq Ft. / 133.3 Sq M.



All measurements have been made in accordance with RICS Code of Measuring Practice which are approximate only and only for illustrative purposes. For the avoidance of doubt, Dowling Jones Design shall not be liable for any reliance on these measurements. © 2018 www.dowlingjones.com 020 7610 9933

City  
25 Walbrook The Walbrook  
Building,  
London EC4N 8AF  
020 7337 4000

*Urban living, your way.*

[jll.co.uk/residential](http://jll.co.uk/residential)

© 2019 Jones Lang LaSalle IP, Inc. All rights reserved. All information contained herein is from sources deemed reliable; however, no representation or warranty is made to the accuracy thereof.

