



# Battersea Exchange, London SW8

Asking price £1,200,000 Leasehold









## Description

This spacious three bedroom, two bathroom apartment is located in Foundry House within Battersea Exchange development. Conveniently located on the edge of the Nine Elms regeneration area, residents can afford easy access to the City via the overground stations of Battersea Park and Queenstown Road National Rail, in addition to Battersea Power Station underground.

The accommodation comprises large entrance hall with built in double cupboard, open plan reception room / kitchen area which opens onto a large terrace. three double bedrooms, master with en-suite shower room and built in wardrobes and a separate family bathroom with bath and separate shower finishes off the property.

Residents can also enjoy the benefits of the on site communal gym, concierge service and cycle storage.

Early viewings are highly recommended

- 3 Double bedrooms
- 2 Bathrooms
- Large Terrace
- 9th Floor
- Approx. 1,048 sq ft (97.4 sq m)
- Zone 1 transport links
- On-site communal gym and cycle storage
- Concierge services
- Leasehold (991 years)
- Landscaped courtyard gardens

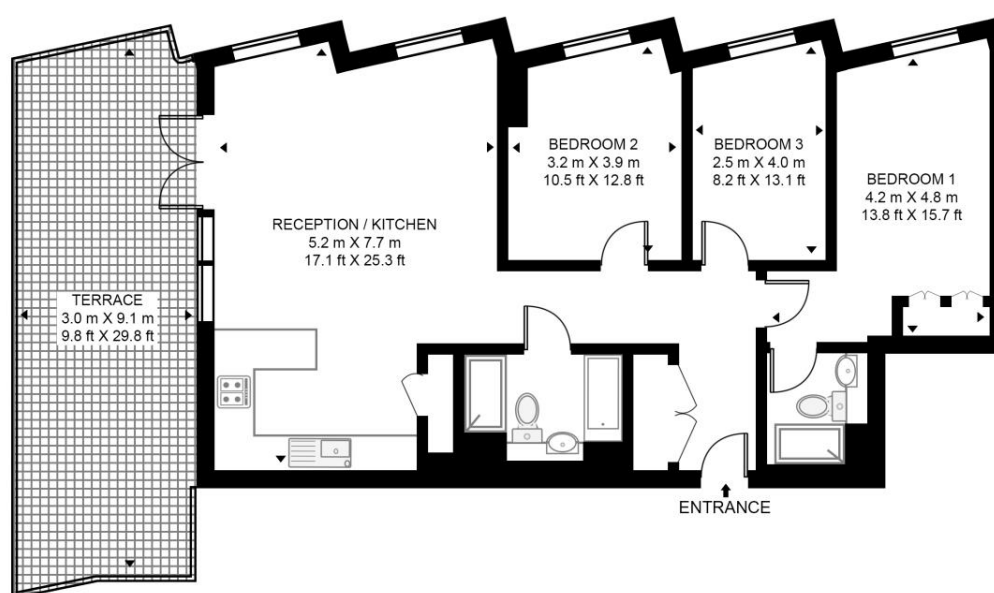


# Floorplan

1,048 sq ft | 97 sq m

## FOUNDRY HOUSE, BATTERSEA EXCHANGE

APPROXIMATE GROSS INTERNAL FLOOR AREA 1048 SQ.FT (97.4 SQ.M)



### NINTH FLOOR



This floor plan has been defined by the RICS Code of Measurement. This floor plan and all others are for approximate representative purposes only and upon usage is agreed to as such by the client.

WWW: [hdvirtualart.com](http://hdvirtualart.com) | TEL: 0203.974.1567 | EMAIL: [info@hdvirtualart.com](mailto:info@hdvirtualart.com)

Nine Elms  
4 Riverlight Quay,  
London SW11 8DG  
+4420 3147 1333  
[lettingsnineelms@eu.jll.com](mailto:lettingsnineelms@eu.jll.com)

*Urban living, your way.*

[jll.co.uk/residential](http://jll.co.uk/residential)

© 2019 Jones Lang LaSalle IP, Inc. All rights reserved. All information contained herein is from sources deemed reliable; however, no representation or warranty is made to the accuracy thereof.

