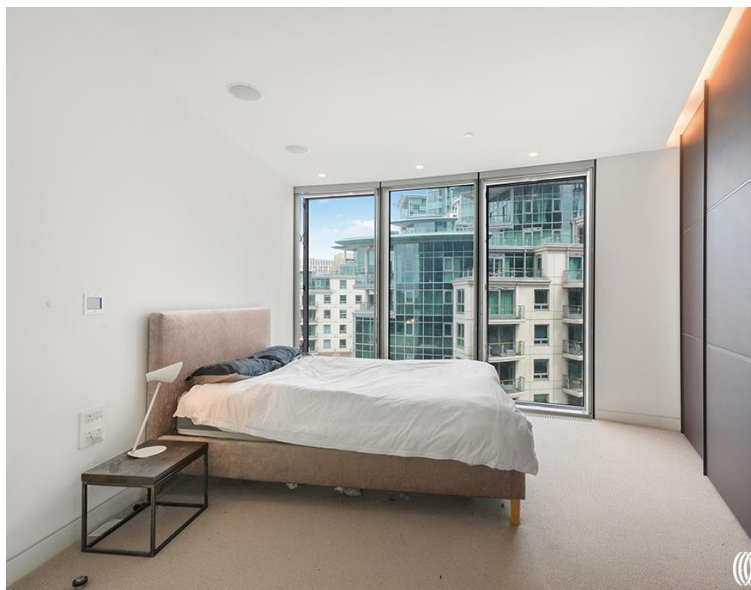
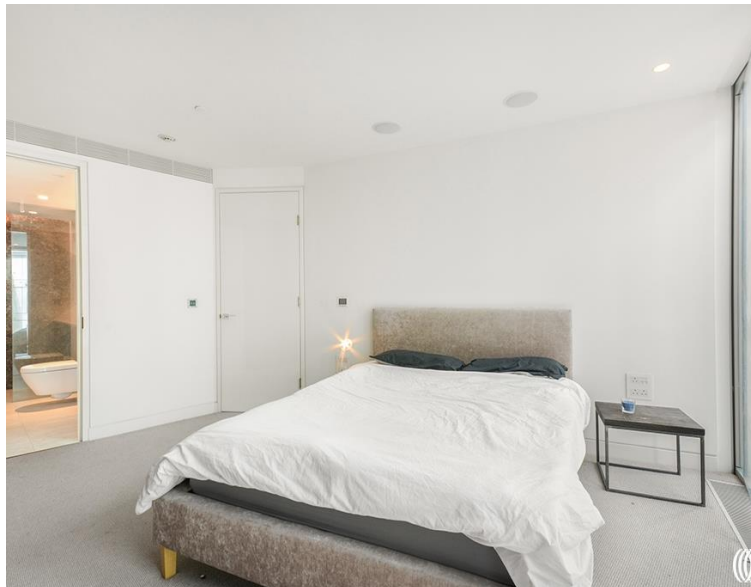


St George Wharf, London SW8

Price £1,850 per week - Furnished







Description

A stunning 3 bedroom apartment with spectacular river views in The Tower, One St George Wharf by Vauxhall.

This well-appointed property comprises of an open-plan kitchen reception room with winter garden, three double bedrooms, two bathrooms and ample built in storage.

The apartment has been finished to a high specification and offers integrated home technology. Benefits include triple glazing, mood lighting, integrated sound system, comfort cooling and under floor heating.

Includes valet parking for one car.

Residents will benefit from a private health club with gym, infinity swimming pool, sauna and steam room. The development also features a dedicated 24-hour concierge service, boardroom with conference facilities, a business lounge and a private screening room.

The Tower has an enviable position on the south bank of the River Thames close to Kensington and Chelsea. Located moments from Vauxhall tube and train station.

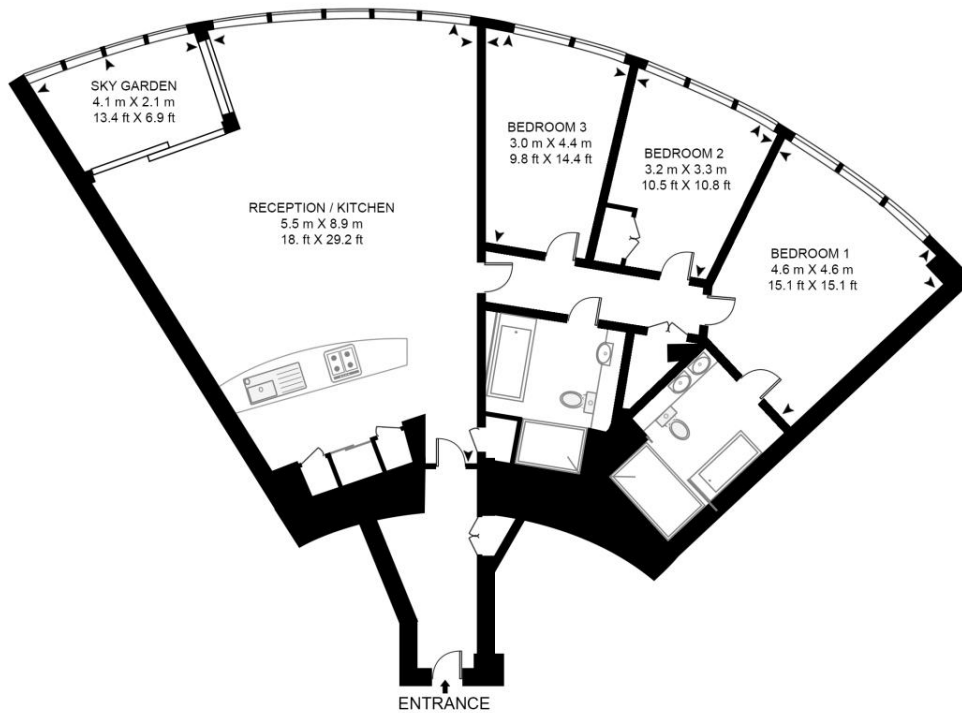
- 3 Bedrooms
- 2 Bathrooms
- Vauxhall
- 24 hr. concierge
- Secure parking
- Luxury facilities
- 1434 sq. ft. (133 sq.m)
- Furnished
- EPC: B

Floorplan

1,432 sq ft | 133 sq m

THE TOWER, ST GEORGE'S WHARF

APPROXIMATE GROSS INTERNAL FLOOR AREA 1434 SQ.FT (133.2 SQ.M)



FOURTH FLOOR

HDVA

This floor plan has been defined by the RICS Code of Measurement. This floor plan and all others are for approximate representative purposes only and upon usage is agreed to as such by the client.

WWW: hdvirtualart.com | TEL: 0203.974.1567 | EMAIL: info@hdvirtualart.com

Nine Elms
4 Riverlight Quay,
London SW11 8DG
+4420 3147 1333
lettingsnineelms@eu.jll.com

Urban living, your way.

jll.co.uk/residential

© 2019 Jones Lang LaSalle IP, Inc. All rights reserved. All information contained herein is from sources deemed reliable; however, no representation or warranty is made to the accuracy thereof.

