

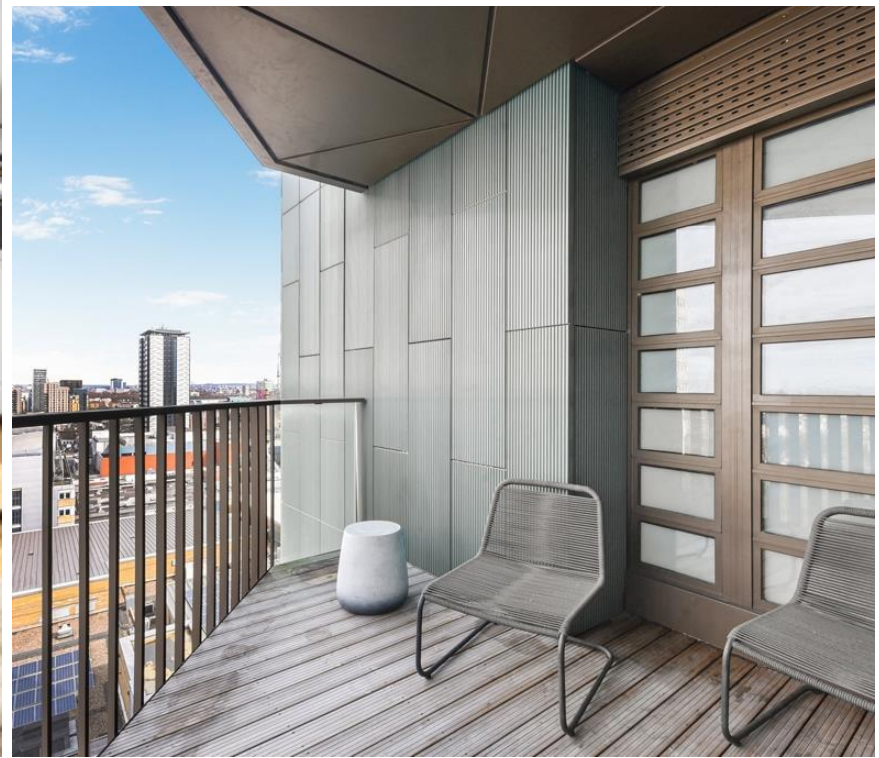


# Mapleton Crescent, London SW18

Guide price £595,000 Leasehold







# Description

A 12th floor 2 bedroom apartment in the iconic Mapleton Crescent building, Wandsworth SW18.

The apartment is set over approx. 873 sq ft and comprises of a spacious open plan reception with fully fitted kitchen including breakfast bar, private balcony, master bedroom with fitted wardrobes, second double bedroom, contemporary bathroom, ample storage.

Mapleton Crescent boasts a 23rd floor roof terrace with stunning views of London. The development also has a communal lounge and ample bike storage. It is excellently located with the green space of King Georges park around the corner along with the convenience of a shopping centre, restaurants, gyms and pubs on your doorstep.

Wandsworth Town and Putney East stations are within walking distance and the developments are well serviced by local bus routed.

EPC: B, Leasehold: 120 years remaining, Council Tax band: F, Ground rent:

- 2 Bedrooms
- 1 Bathroom
- Private balcony
- Residents 23rd floor roof terrace
- Approx. 873 sq ft
- Wandsworth Town station nearby
- Close to local amenities
- EPC: B
- Leasehold

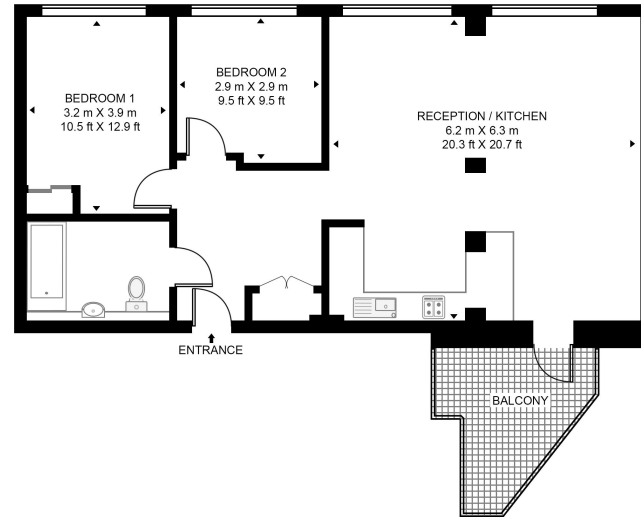


# Floorplan

873 sq ft | 81 sq m

## MAPLETON CRESCENT

APPROXIMATE GROSS INTERNAL FLOOR AREA 873 SQ.FT (81 SQ.M)



TWELFTH FLOOR



This floor plan has been defined by the RICS Code of Measurement. This floor plan and all others are for approximate representative purposes only and upon usage is agreed to as such by the client.  
WWW: [hdvirtualart.com](http://hdvirtualart.com) | TEL: 0203.974.1567 | EMAIL: [info@hdvirtualart.com](mailto:info@hdvirtualart.com)

### Nine Elms

4 Riverlight Quay,  
London SW11 8DG  
+4420 3147 1333  
[lettingsnineelms@eu.jll.com](mailto:lettingsnineelms@eu.jll.com)

*Urban living, your way.*

[jll.co.uk/residential](http://jll.co.uk/residential)

© 2019 Jones Lang LaSalle IP, Inc. All rights reserved. All information contained herein is from sources deemed reliable; however, no representation or warranty is made to the accuracy thereof.

