



Clapham Road, London SW9

Guide price £360,000 Leasehold





Description

A smart and modern studio apartment in a former Printworks that has been completely refurbished to offer bright and contemporary living located close to Clapham High Street and Stockwell and Oval tube stations.

The luxury apartment with wooden floors throughout comprises of bedroom area, fitted wardrobes, integrated kitchen, modern bathroom, and bright reception area.

Further onsite benefits include bike storage and a Tesco's express, The Gym (subject to charges) and Dolcezza cafe all within the development.

Ideally located between Stockwell (Northern & Victoria line) and Oval (Northern Line) for transport into Central London.



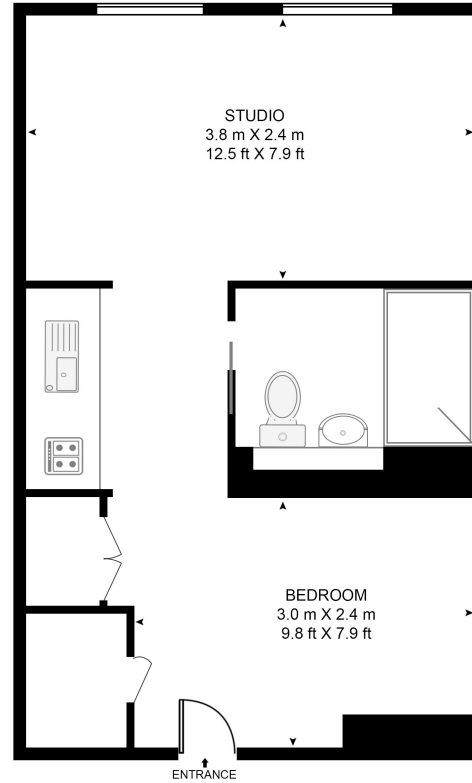
- Studio Apartment
- 1 Bathroom
- Wooden Floors
- Nr. Clapham High St
- 0.4 Miles to Stockwell & Oval Tubes
- Furnished
- 274 sq.ft (25 sq. m)
- EPC: C

Floorplan

274 sq ft | 26 sq m

THE PRINTWORKS, 139 CLAPHAM ROAD

APPROXIMATE GROSS INTERNAL FLOOR AREA 308.2 SQ.FT (28.7 SQ.M)



SECOND FLOOR

HDVA

This floor plan has been defined by the RICS Code of Measurement. This floor plan and all others are for approximate representative purposes only and upon usage is agreed to as such by the client.
WWW: hdvirtualart.com | TEL: 0203.974.1567 | EMAIL: info@hdvirtualart.com

Nine Elms

4 Riverlight Quay,
London SW11 8DG
+4420 3147 1333

lettingsnineelms@eu.jll.com

Urban living, your way.

jll.co.uk/residential

© 2019 Jones Lang LaSalle IP, Inc. All rights reserved. All information contained herein is from sources deemed reliable; however, no representation or warranty is made to the accuracy thereof.

