



28 Minton Grove

Baddeley Green, Stoke-On-Trent, ST2 7QT

MINT condition, MINT location, MINT property here on MINTon Grove. Located in the extremely popular area of Baddeley Green, this immaculate and spacious coach house is the perfect first time buyer or investor purchase. The property comprises a lounge, modern fitted kitchen, two bedrooms and bathroom. Externally the property benefits from off road parking and a garage. Nestled away in the corner of the a cul-de-sac close to local amenities and excellent commuter links its one not to be missed. Sold with no upward chain, call to book a viewing today!

Asking price £114,950

28 Minton Grove

Baddeley Green, Stoke-On-Trent, ST2 7QT



- IMMACULATE COACH HOUSE
- TWO BEDROOMS
- GARAGE
- LEASEHOLD PROPERTY
- SPACIOUS LOUNGE
- BATHROOM
- POPULAR LOCATION
- MODERN FITTED KITCHEN
- OFF ROAD PARKING
- NO UPWARD CHAIN

GROUND FLOOR

A double glazed front door and stairs leading to the first floor.

FIRST FLOOR

Landing

Stairs from the ground floor and loft hatch access.

Lounge

17'9" x 10'11" (5.42 x 3.35)

A double glazed window to the front and rear aspect. Television point and electric wall heater.

Kitchen

10'0" x 6'9" (3.07 x 2.06)

A double glazed window to the rear aspect. Fitted with a range of wall and base storage units with inset

stainless steel sink and side drainer. **Bathroom**

Co ordinating work surface areas and partly tiled walls. Integrated appliances include an electric oven and electric hob with cooker hood above. Plumbing for a washing machine and space for a fridge/freezer. Electric wall heater and tiled flooring.

Bedroom One

11'2" x 9'1" (3.41 x 2.79)

A double glazed window to the front aspect. Door to storage cupboard and electric wall heater.

Bedroom Two

12'10" x 6'4" (3.92 x 1.95)

A double glazed window to the rear aspect. Door to storage cupboard and electric wall heater.

7'4" x 6'5" (2.24 x 1.96)

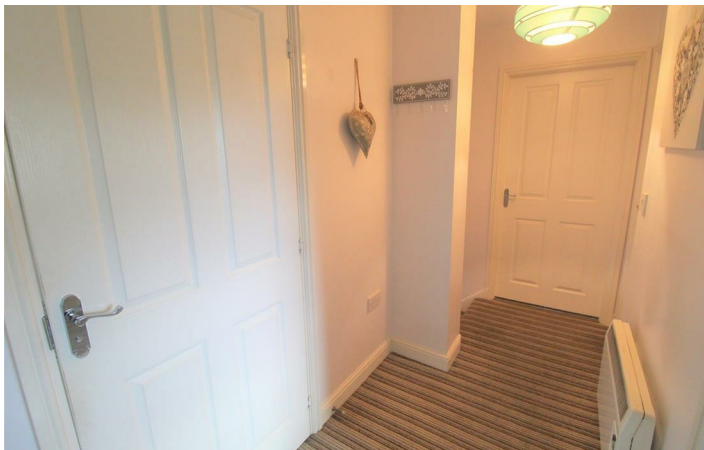
A double glazed window to the front aspect. Fitted with a suite comprising bath with mixer tap and shower over head. Wash hand basin and low level W.C. Partly tiled walls and shaver point. Electric wall heater.

GARAGE

17'10" x 12'9" (5.46 x 3.89)

A up and over door. Power and light.





Floor Plan

These particulars, whilst believed to be accurate are set out as a general outline only for guidance and do not constitute any part of an offer or contract. Intending purchasers should not rely on them as statements of representation of fact, but must satisfy themselves by inspection or otherwise as to their accuracy. No person in this firm's employment has the authority to make or give any representation or warranty in respect of the property.

