



## 70 Gordon Street Burslem, Stoke-On-Trent, ST6 1HY

ON YOUR MARKS, GET SET, GO!!!! Make sure you aren't the last off the starting line, to get to this spacious, traditional terraced on GORDON STREET, Burslem. You will want to be the front runner to see what's on offer. The accommodation comprises of two reception rooms, a good sized kitchen, two bedrooms, one with fitted wardrobes and a downstairs bathroom. Externally, there is a fully enclosed paved rear courtyard. Fight off the competition and hit the finish line first!!!! Call us today to book a viewing.

**Offers in the region of £71,000**

# 70 Gordon Street

Burslem, Stoke-On-Trent, ST6 1HY



- SPACIOUS MID TERRACED
- TWO GOOD SIZED RECEPTION ROOMS
- FITTED KITCHEN
- GROUND FLOOR BATHROOM
- TWO GOOD SIZED BEDROOMS
- REAR COURTYARD
- POPULAR LOCATION
- CLOSE TO AMENITIES
- SOLD WITH NO UPWARD CHAIN

## GROUND FLOOR

### Entrance Porch

4'5" x 1'6" (1.36 x 0.47)

Double glazed door and window to the front aspect.

### Sitting Room

11'11" x 9'4" (3.65 x 2.85)

Double glazed bay window to the front aspect. Radiator. Gas fire and surround.

### Lounge

11'2" x 10'11" (3.41 x 3.34)

Double glazed window to the rear aspect. Radiator. Door to under stairs storage and a door to the stairs to the first floor.

### Kitchen

13'8" x 5'9" (4.18 x 1.77)

Double glazed window to the side aspect. Fitted

with a range of wall and base units. Co-ordinated work surfaces. Stainless steel sink with drainer. Space for a fridge/freezer and gas cooker. Plumbing for a washing machine. Fully tiled walls. Storage cupboard between the Kitchen and Bathroom houses combi boiler.

### Bathroom

8'5" x 5'4" (2.58 x 1.64)

Double glazed window to the side aspect. Bath with wall-mounted electric shower. Wash hand basin and low level WC. Radiator. Fully tiled.

## FIRST FLOOR

### Bedroom One

11'2" x 11'0" (3.42 x 3.36)

Double glazed window to the rear aspect. Radiator. Recess with access to attic space.

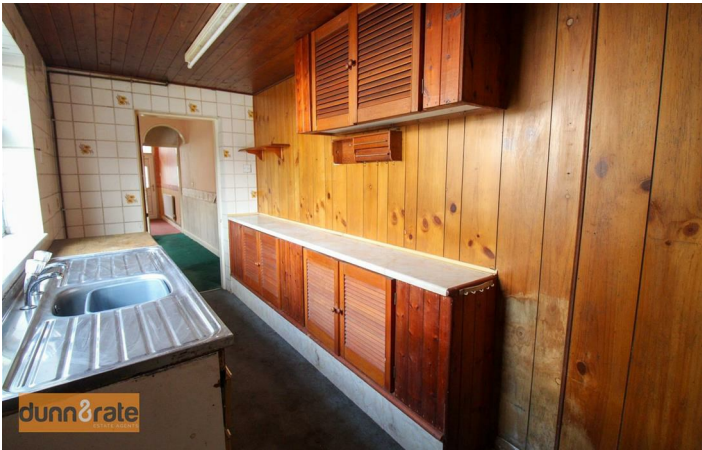
### Bedroom Two

9'7" x 8'7" (2.94 x 2.63)

Double glazed window to the front aspect. Fitted wardrobe units. Radiator.

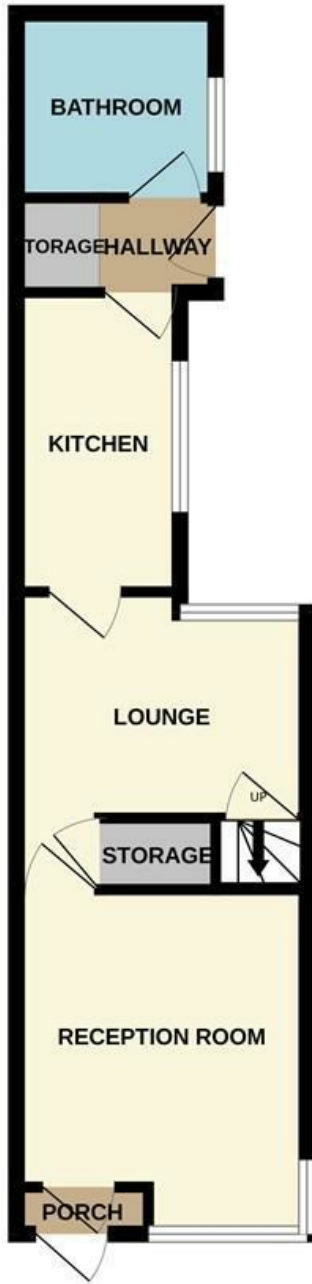
## EXTERIOR

Fully paved rear garden with gated access.

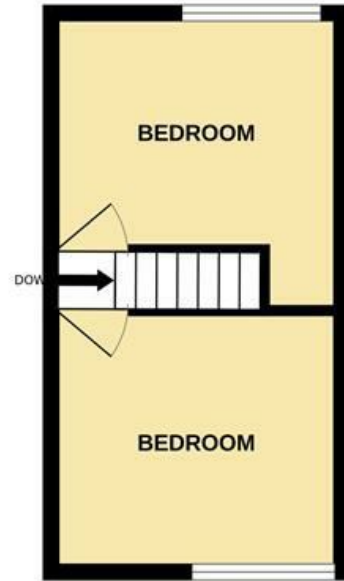


# Floor Plan

GROUND FLOOR



1ST FLOOR



Whilst every attempt has been made to ensure the accuracy of the floorplan contained here, measurements of doors, windows, rooms and any other items are approximate and no responsibility is taken for any error, omission or mis-statement. This plan is for illustrative purposes only and should be used as such by any prospective purchaser. The services, systems and appliances shown have not been tested and no guarantee as to their operability or efficiency can be given.  
Made with Metropix ©2024

These particulars, whilst believed to be accurate are set out as a general outline only for guidance and do not constitute any part of an offer or contract. Intending purchasers should not rely on them as statements of representation of fact, but must satisfy themselves by inspection or otherwise as to their accuracy. No person in this firm's employment has the authority to make or give any representation or warranty in respect of the property.

