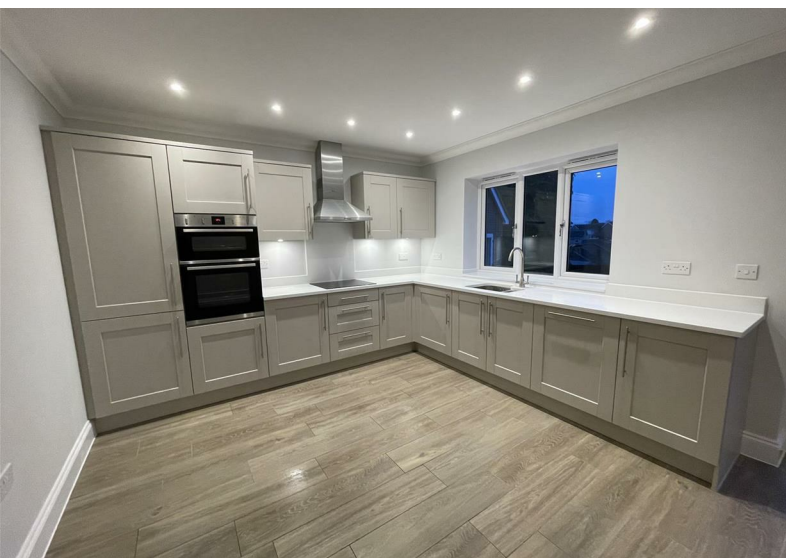




**Plot 5 Bradfield Mews Windmill Road, Manningtree, CO11 2QR**  
**Guide price £575,000**



# Plot 5 Bradfield Mews Windmill Road, Manningtree, CO11 2QR

## Guide price £575,000



A select development of just five detached three bedroom bungalows set back from Windmill Road and enjoying good sized plots. All of the properties have en-suite shower wet-rooms to the principal bedroom. Contact us early to discuss the possibilities to personalise your new home in the picturesque village of Bradfield, located just 3 miles from Manningtree.

### Some More Information

From the entrance door you enter the entrance hall where doors give access to all rooms, the sitting room is located to the rear and benefits from French doors opening on to the Indian Sandstone paved rear terrace, with glazed side lights to either side.

The kitchen dining room is located to the opposite side of the property also to the rear and benefits from French doors to the paved rear terrace also. The kitchen will be completed with a range of eye and base level cupboards and drawers with a choice of colours available from the builders standard range (subject to build stage) fitted appliances including, eye level double oven, electric hob, extractor dishwasher and fridge freezer will be included as standard. A further door leads from the kitchen dining room to the utility room which will be fitted with matching base level cupboards below a worksurface and will include spaces for two freestanding appliances along with a door leading to the rear garden.

Bedroom one is located to the front of the property and benefits from a bay window overlooking the central gravel courtyard and a further door gives access to the en-suite which is fitted with a fully tiled wet room shower area, low level W.C. and wash hand basin with tiled splashback.

Bedrooms two and three are both double bedrooms and are serviced by the family bathroom which is fitted with a panel enclosed bath with shower over, low level W.C. and wash hand basin.

### Externally

Externally the property benefits from a block paved driveway leading to the detached single garage and gated side access. To the immediate rear of the property there is an Indian Sandstone paved terrace whilst the remainder of the garden is

laid to lawn and enclosed by wood panel fences and hedges. The front garden will also be laid to lawn with some shrub and hedge planting.

### Location

Bradfield Mews is located in the popular village of Bradfield with walks along the banks of the River Stour and the Essex Way footpath nearby. The village has a good range of local amenities including post office/village store, primary school and public house. The nearby town of Manningtree benefits from a number of local and recreational amenities and a mainline station with services to London Liverpool Street.

The nearby A120 provides access to Harwich to the East and the City of Colchester to the West with its wide range of facilities including Castle Park, Mercury Theatre, many restaurants along with independent and national retailer stores.

### Sitting Room

16'9" x 13'9" (5.11m x 4.19m)

### Kitchen/Dining Room

17'1" x 13'9" (5.21m x 4.19m)

### Utility Room

6'11" x 6'3" (2.11m x 1.91m)

### Bedroom One

14'9" x 13'9" exc bay (4.50m x 4.19m exc bay)

### En-suite

### Bedroom Two

13'9" x 10'2" (4.19m x 3.10m)

### Bedroom Three

12'6" x 10'2" (3.81m x 3.10m)

### Family Bathroom

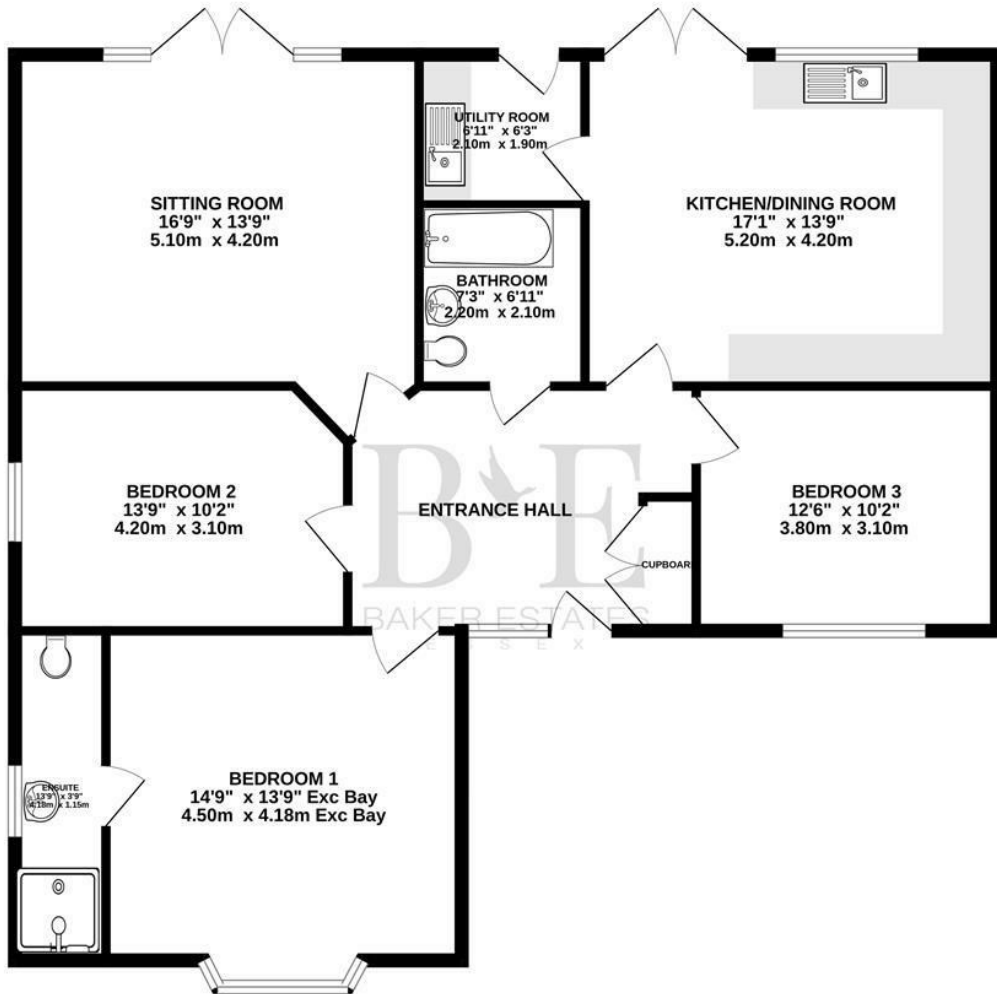
7'3" x 6'11" (2.21m x 2.11m)

### Important Information on Images

Some of the images contained within this brochure are taken

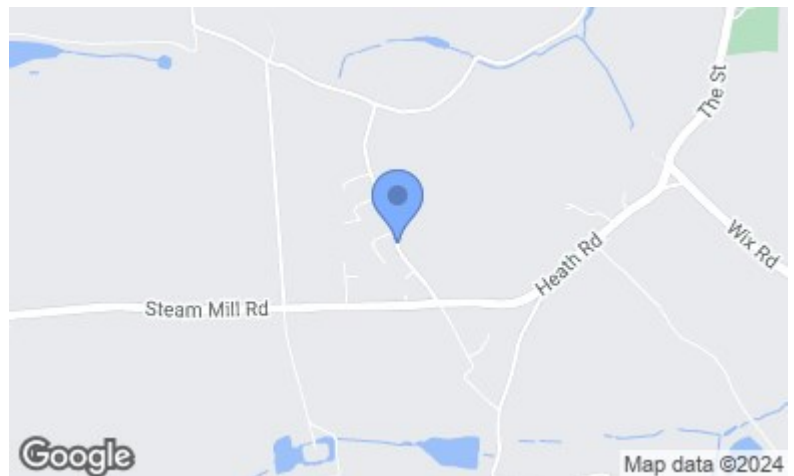
from previous developments constructed by our clients these are provided for information purposes only and you should check with the selling agent as well as your solicitors prior to exchange of contracts to clarify if any on the items you are placing material reliance upon are included in this purchase. Some floor plan layout and CGI's shown are for similar properties but may be handed versions.

GROUND FLOOR  
1238 sq.ft. (115.1 sq.m.) approx.



TOTAL FLOOR AREA: 1238 sq.ft. (115.1 sq.m.) approx.

Whilst every attempt has been made to ensure the accuracy of the floorplan contained here, measurements of doors, windows, rooms and any other items are approximate and no responsibility is taken for any error, omission or mis-statement. This plan is for illustrative purposes only and should be used as such by any prospective purchaser. The services, systems and appliances shown have not been tested and no guarantee as to their operability or efficiency can be given.  
Made with Metropix ©2023



Energy Efficiency Rating		Current	Potential
Very energy efficient - lower running costs			
(92 plus) <b>A</b>			
(81-91) <b>B</b>			
(69-80) <b>C</b>			
(55-68) <b>D</b>			
(39-54) <b>E</b>			
(21-38) <b>F</b>			
(1-20) <b>G</b>			
Not energy efficient - higher running costs			
<b>England &amp; Wales</b>	EU Directive 2002/91/EC		

Environmental Impact (CO <sub>2</sub> ) Rating		Current	Potential
Very environmentally friendly - lower CO <sub>2</sub> emissions			
(92 plus) <b>A</b>			
(81-91) <b>B</b>			
(69-80) <b>C</b>			
(55-68) <b>D</b>			
(39-54) <b>E</b>			
(21-38) <b>F</b>			
(1-20) <b>G</b>			
Not environmentally friendly - higher CO <sub>2</sub> emissions			
<b>England &amp; Wales</b>	EU Directive 2002/91/EC		

These particulars, whilst believed to be accurate are set out as a general outline only for guidance and do not constitute any part of an offer or contract. Intending purchasers should not rely on them as statements of representation of fact, but must satisfy themselves by inspection or otherwise as to their accuracy. No person in this firm's employment has the authority to make or give any representation or warranty in respect of the property.