

COPPER
HOUSE
GREEN

DARTFORD

FOUNDERS COURT SOUTH
FLOOR PLANS

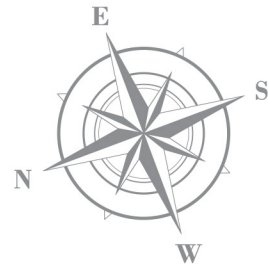
APARTMENTS 337-390

COPPER HOUSE GREEN

DARTFORD

DEVELOPMENT PLAN





- Current Phase
- Future Phase
- Previous Phase
- Housing Association

The site plan is drawn to show the relative position of individual properties. Not to scale. These are drawings and will not show land contours and gradients, boundary treatments, landscaping or local authority street lighting. Footpaths subject to change. For details of individual properties and availability please refer to our Sales Advisor. Block names are for marketing purposes only.



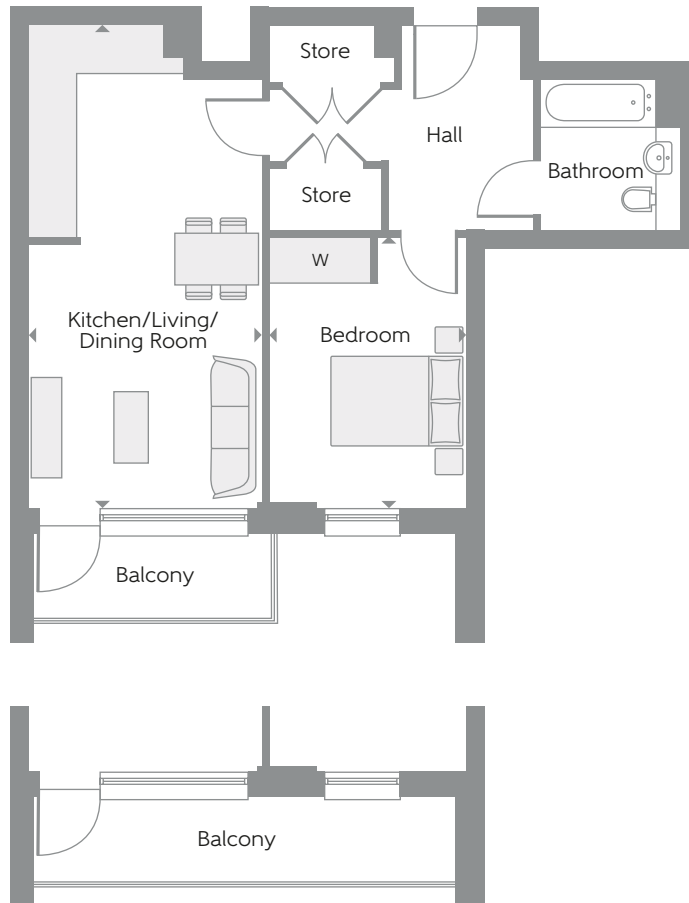


FOUNDERS COURT

TYPE F-01

One Bedroom Apartments

Plots 337, 345, 353, 361, 369 & 377



Full width balcony to plots 337 & 353 only

Kitchen/Living/ Dining Room	7.05m x 3.43m	23'2" x 11'3"
Bedroom	4.02m x 2.90m	13'2" x 9'6"
Total area	53.0 sq.m.	570 sq. ft.

W Fitted Wardrobe c/s Cycle Store b/s Bin Store L Lift ► Indicates where dimensions are taken from

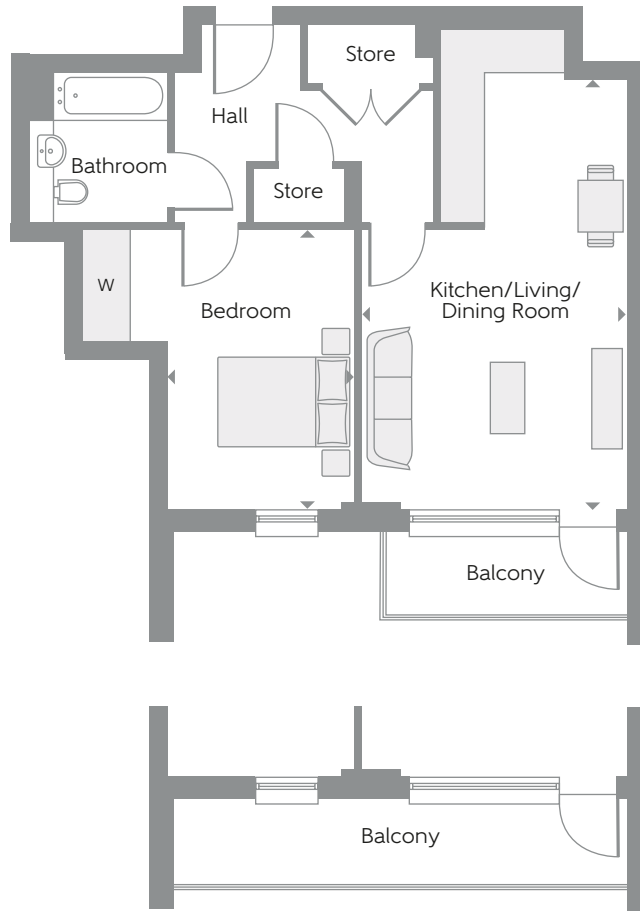
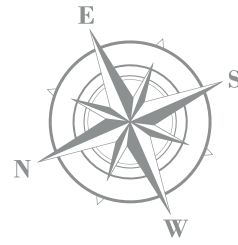
Some items shown in this key may be subject to change, and positions could vary from those indicated on this floorplan. Please refer to Sales Advisor for details of your selected plot. External finishes and landscaping may vary. Please refer to Sales Advisor for further details. All dimensions are approximate and should not be used for carpet sizes, appliance spaces or furniture. Furniture not to scale and all positions are indicative. **Kitchen layouts are subject to change.** We operate a policy of continuous improvement and individual features such as kitchen and bathroom layouts, doors, windows, garages and elevational treatments may vary from time to time. Consequently these particulars should be treated as general guidance only and do not constitute a contract, part of a contract or a warranty. Types F-01 and F-05.

FOUNDERS COURT

TYPE F-05

One Bedroom Apartments

Plots 344, 352, 360, 368, 376, 384 & 390



Full width balcony to plots 344 & 360 only

Kitchen/Living/
Dining Room
Bedroom

6.31m x 3.91m
4.12m x 2.75m

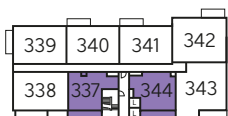
20'8" x 12'10"
13'6" x 9'0"

Total area

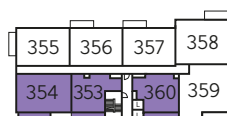
54.3 sq.m.

585 sq.ft.

▲ View towards Central Park



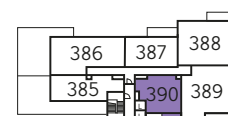
First Floor



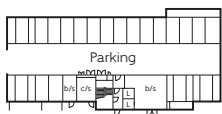
Third Floor



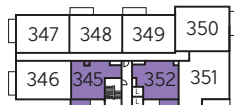
Fifth Floor



Seventh Floor



Ground Floor



Second Floor



Fourth Floor

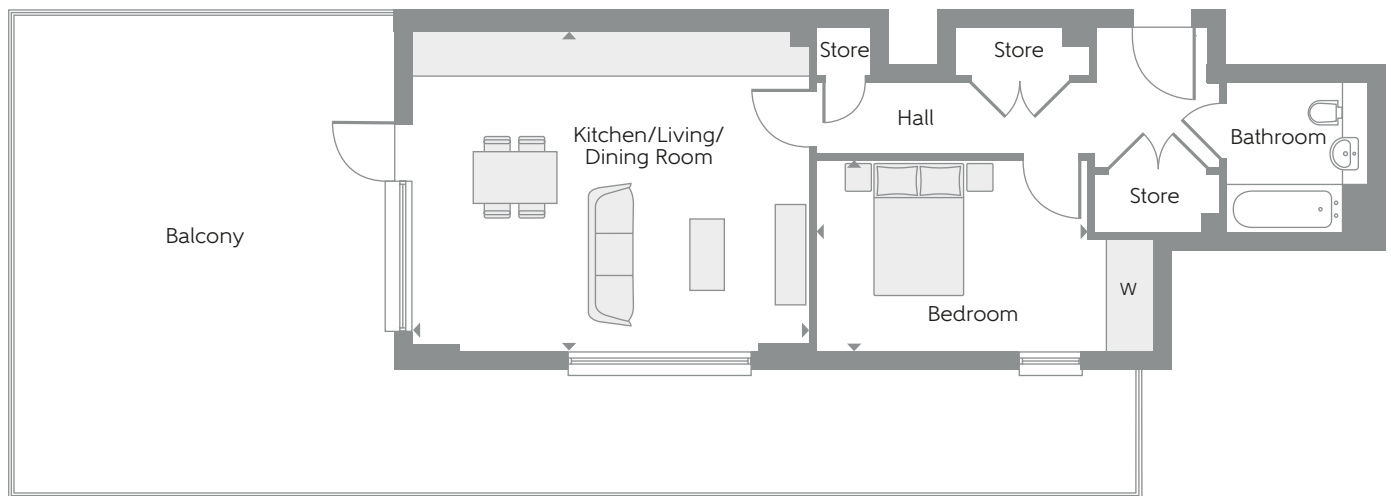


Sixth Floor

FOUNDERS COURT

TYPE F-07

One Bedroom Apartment
Plot 385



Kitchen/Living/ Dining Room	5.86m x 4.69m	19'3" x 15'5"
Bedroom	4.00m x 2.81m	13'1" x 9'3"
Total area	58.8 sq.m.	633 sq.ft.

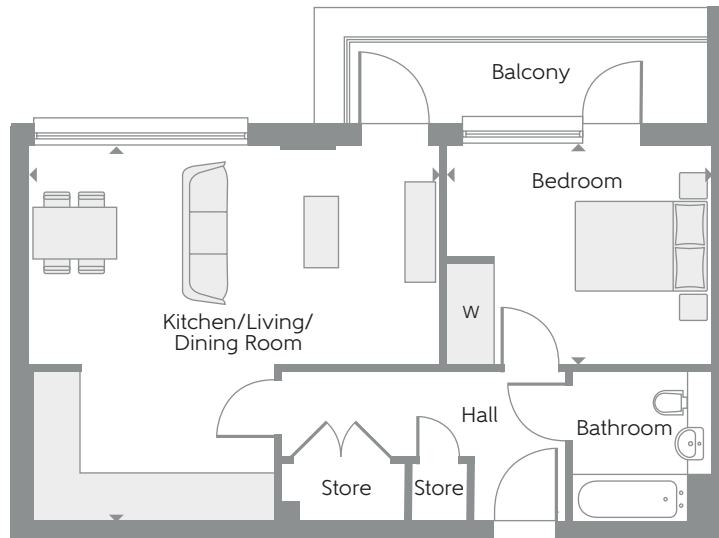
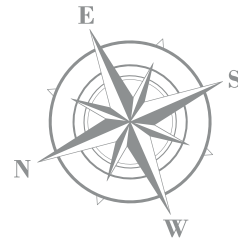
W Fitted Wardrobe c/s Cycle Store b/s Bin Store L Lift ▶ Indicates where dimensions are taken from

Some items shown in this key may be subject to change, and positions could vary from those indicated on this floorplan. Please refer to Sales Advisor for details of your selected plot. External finishes and landscaping may vary. Please refer to Sales Advisor for further details. All dimensions are approximate and should not be used for carpet sizes, appliance spaces or furniture. Furniture not to scale and all positions are indicative. **Kitchen layouts are subject to change.** We operate a policy of continuous improvement and individual features such as kitchen and bathroom layouts, doors, windows, garages and elevational treatments may vary from time to time. Consequently these particulars should be treated as general guidance only and do not constitute a contract, part of a contract or a warranty. Types F-07 and F-09.

FOUNDERS COURT

TYPE F-09

One Bedroom Apartment
Plot 387



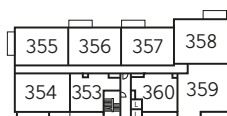
Kitchen/Living/ Dining Room	6.04m x 5.53m	19'10" x 18'2"
Bedroom	3.89m x 3.24m	12'9" x 10'8"

Total area 55.7 sq.m. 600 sq.ft.

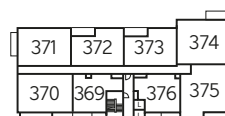
▲ View towards Central Park



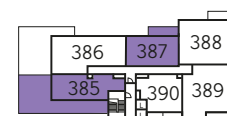
First Floor



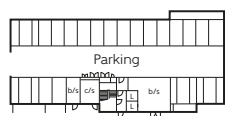
Third Floor



Fifth Floor



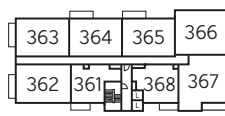
Seventh Floor



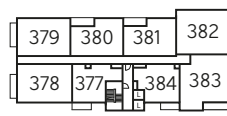
Ground Floor



Second Floor



Fourth Floor



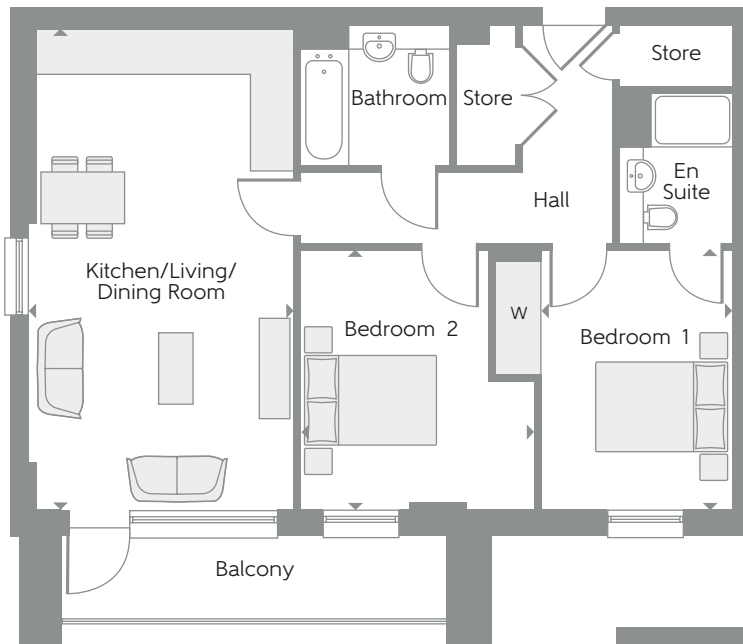
Sixth Floor

FOUNDERS COURT

TYPE F-02

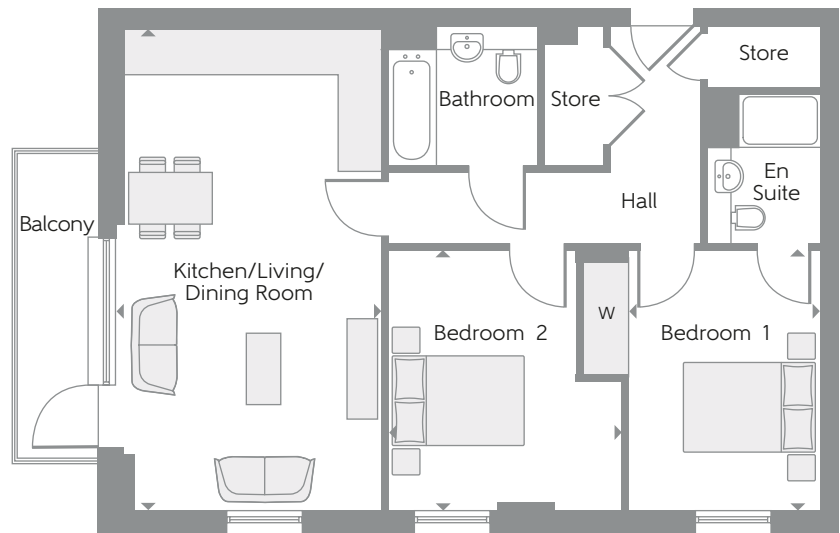
Two Bedroom Apartments

Plots 338, 346, 354, 362, 370 & 378



Balcony position to plots 338, 354 & 370

Kitchen/Living/ Dining Room	7.05m x 3.91m	23'2" x 12'10"
Bedroom 1	3.82m x 2.80m	12'6" x 9'2"
Bedroom 2	3.82m x 3.45m	12'6" x 11'4"
Total area	73.8 sq.m.	794 sq.ft.



Balcony position to plots 346, 362 & 378

W Fitted Wardrobe c/s Cycle Store b/s Bin Store L Lift ► Indicates where dimensions are taken from

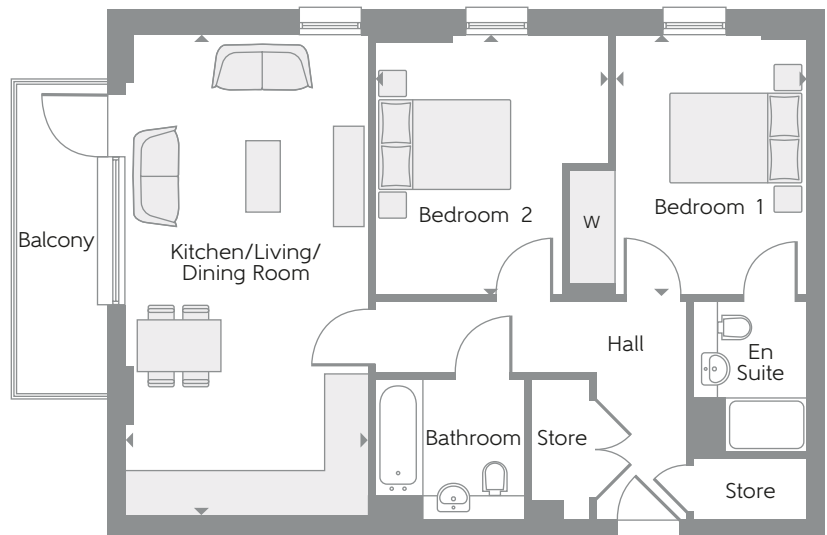
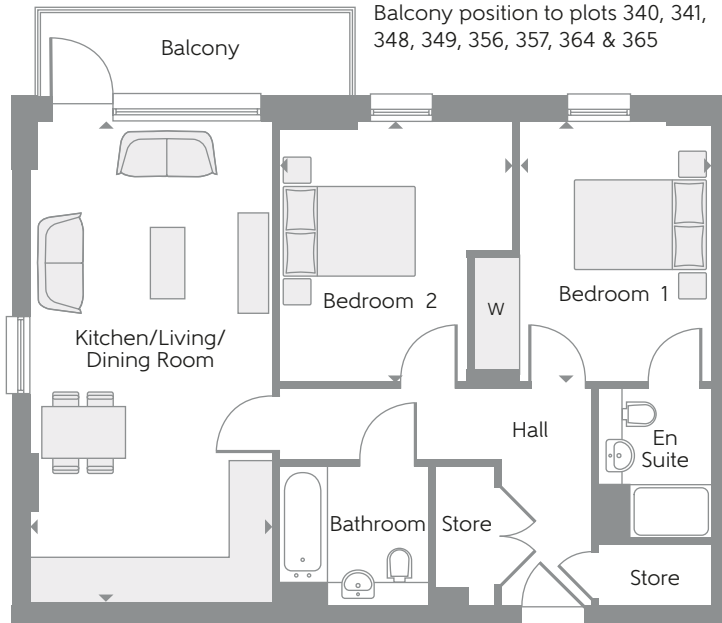
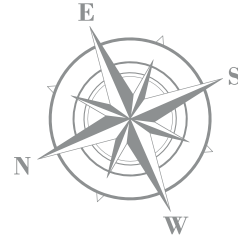
Some items shown in this key may be subject to change, and positions could vary from those indicated on this floorplan. Please refer to Sales Advisor for details of your selected plot. External finishes and landscaping may vary. Please refer to Sales Advisor for further details. All dimensions are approximate and should not be used for carpet sizes, appliance spaces or furniture. Furniture not to scale and all positions are indicative. **Kitchen layouts are subject to change.** We operate a policy of continuous improvement and individual features such as kitchen and bathroom layouts, doors, windows, garages and elevational treatments may vary from time to time. Consequently these particulars should be treated as general guidance only and do not constitute a contract, part of a contract or a warranty. Types F-02 and F-03.

FOUNDERS COURT

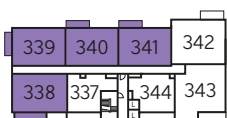
TYPE F-03

Two Bedroom Apartments

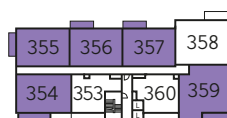
Plots 339, 340, 341, 347, 348, 349, 355, 356, 357, 363, 364, 365, 371 & 379



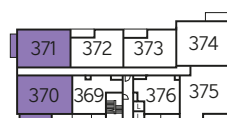
▲ View towards Central Park



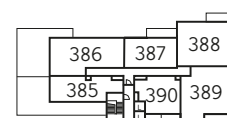
First Floor



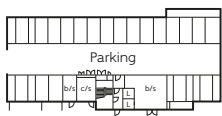
Third Floor



Fifth Floor



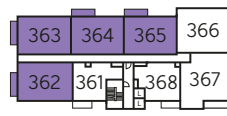
Seventh Floor



Ground Floor



Second Floor



Fourth Floor



Sixth Floor

FOUNDERS COURT

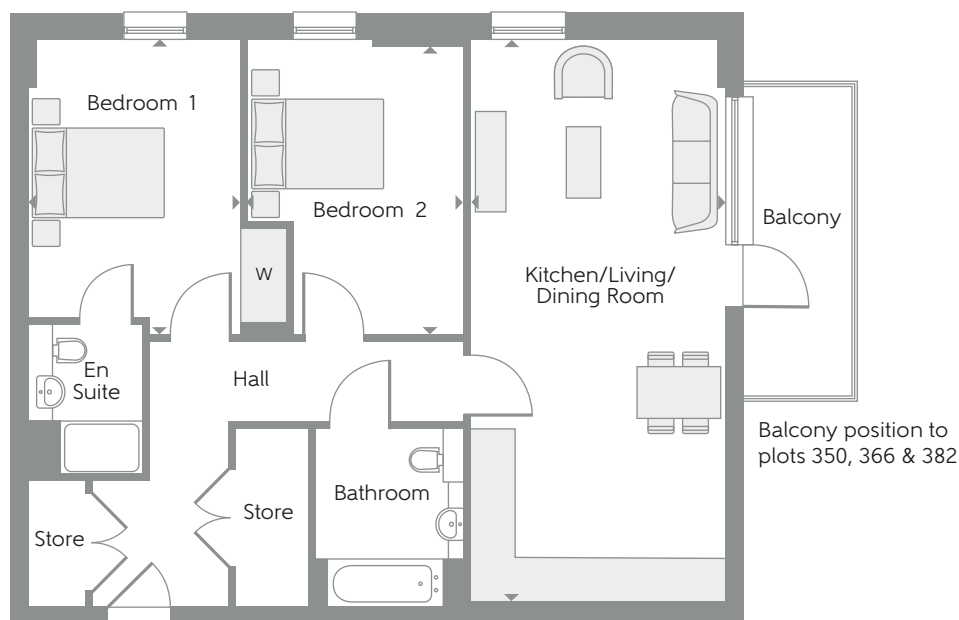
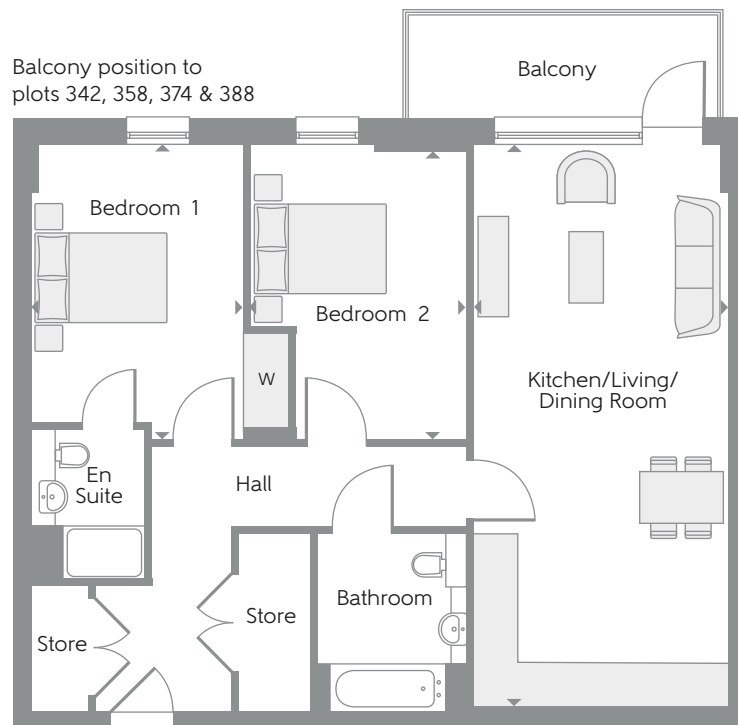
TYPE F-04 (Wheelchair Adaptable)*

Two Bedroom Apartments

Plots 342, 350, 358, 366, 374, 382 & 388

*These apartments offer step free access with wider doors and corridors plus sockets set at a higher level (1m).

Kitchen/Living/ Dining Room	8.26m x 3.75m	27'1" x 12'4"
Bedroom 1	4.33m x 3.10m	14'2" x 10'2"
Bedroom 2	4.33m x 3.20m	14'2" x 10'6"
Total area	85.7 sq.m.	922 sq.ft.



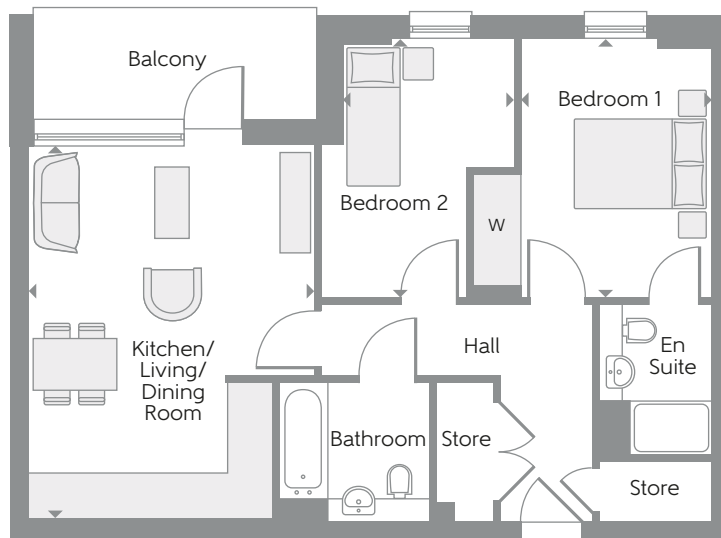
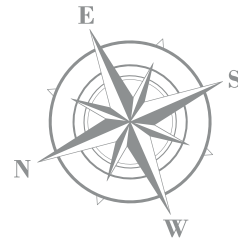
W Fitted Wardrobe c/s Cycle Store b/s Bin Store L Lift ► Indicates where dimensions are taken from

Some items shown in this key may be subject to change, and positions could vary from those indicated on this floorplan. Please refer to Sales Advisor for details of your selected plot. External finishes and landscaping may vary. Please refer to Sales Advisor for further details. All dimensions are approximate and should not be used for carpet sizes, appliance spaces or furniture. Furniture not to scale and all positions are indicative. **Kitchen layouts are subject to change.** We operate a policy of continuous improvement and individual features such as kitchen and bathroom layouts, doors, windows, garages and elevational treatments may vary from time to time. Consequently these particulars should be treated as general guidance only and do not constitute a contract, part of a contract or a warranty. Types F-04 and F2-13.

FOUNDERS COURT

TYPE F-06

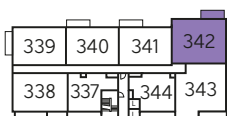
Two Bedroom Apartments
Plots 372, 373, 380 & 381



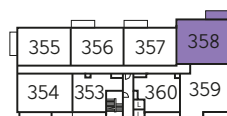
Column in this location for plots 372 & 380 only

Kitchen/Living/ Dining Room	5.54m x 4.19m	18'2" x 13'9"
Bedroom 1	3.82m x 2.80m	12'6" x 9'2"
Bedroom 2	3.82m x 2.51m	12'6" x 8'3"
Total area	64.6 sq.m.	696 sq.ft.

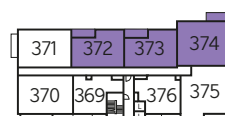
▲ View towards Central Park



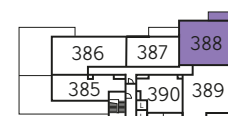
First Floor



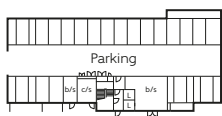
Third Floor



Fifth Floor



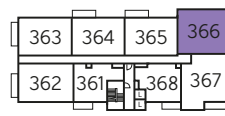
Seventh Floor



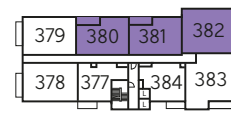
Ground Floor



Second Floor



Fourth Floor



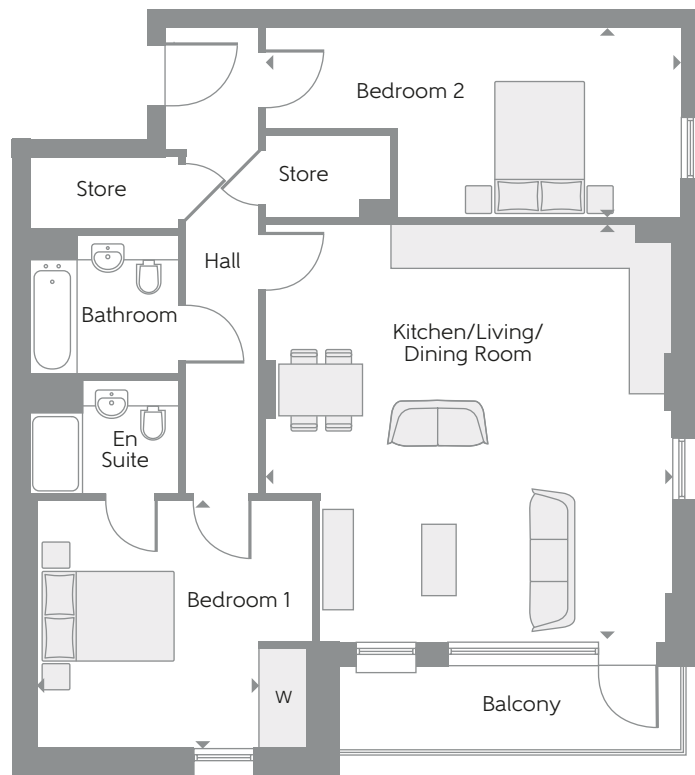
Sixth Floor

FOUNDERS COURT

TYPE F2-13

Two Bedroom Apartments

Plots 343, 351, 359, 367, 375, 383 & 389



Kitchen/Living/ Dining Room	6.14m x 6.00m	20'2" x 19'8"
Bedroom 1	3.65m x 3.36m	12'0" x 11'0"
Bedroom 2	6.11m x 2.78m	20'1" x 9'1"
Total area	89.4 sq.m.	962 sq.ft.

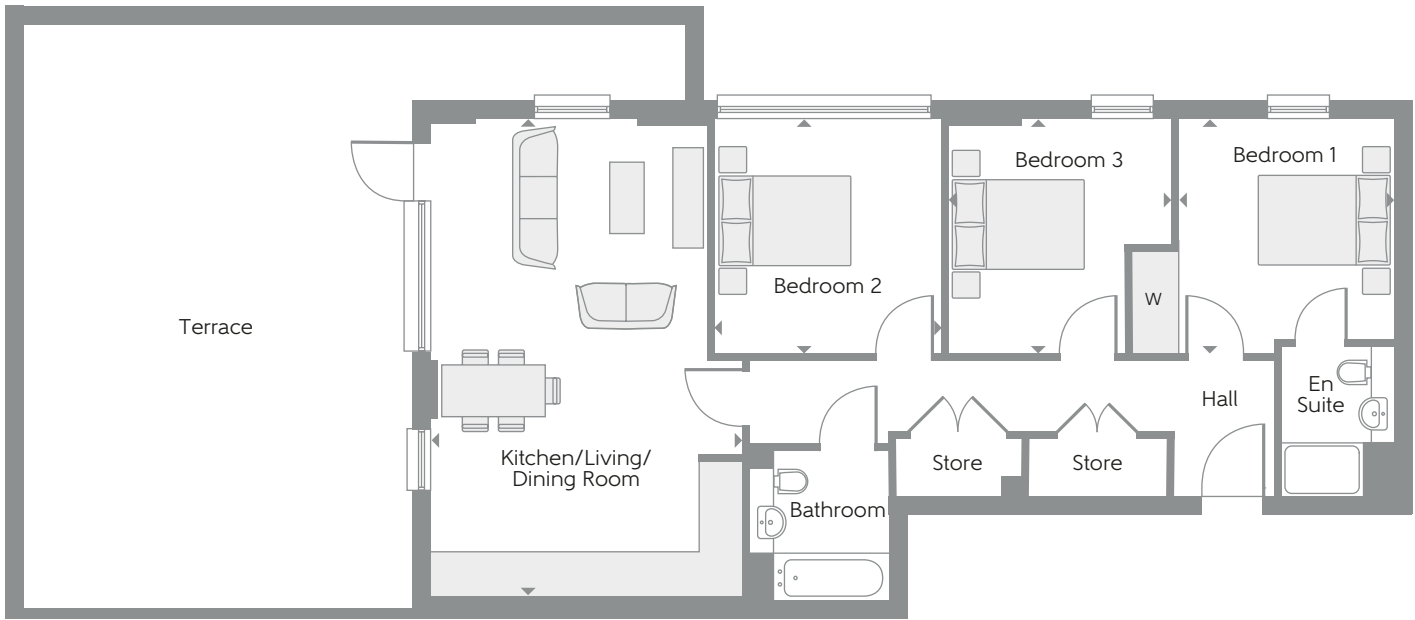
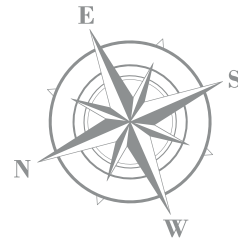
W Fitted Wardrobe c/s Cycle Store b/s Bin Store L Lift ► Indicates where dimensions are taken from

Some items shown in this key may be subject to change, and positions could vary from those indicated on this floorplan. Please refer to Sales Advisor for details of your selected plot. External finishes and landscaping may vary. Please refer to Sales Advisor for further details. All dimensions are approximate and should not be used for carpet sizes, appliance spaces or furniture. Furniture not to scale and all positions are indicative. **Kitchen layouts are subject to change.** We operate a policy of continuous improvement and individual features such as kitchen and bathroom layouts, doors, windows, garages and elevational treatments may vary from time to time. Consequently these particulars should be treated as general guidance only and do not constitute a contract, part of a contract or a warranty. Types F2-13 Type F-08.

FOUNDERS COURT

TYPE F-08

Three Bedroom Apartment
Plot 386

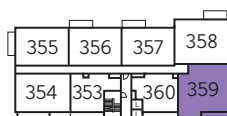


Kitchen/Living/ Dining Room	7.07m x 4.61m	23'2" x 15'1"
Bedroom 1	3.45m x 3.16m	11'4" x 10'4"
Bedroom 2	3.45m x 3.35m	11'4" x 11'0"
Bedroom 3	3.45m x 3.30m	11'4" x 10'10"
Total area	88.4 sq.m.	952 sq.ft.

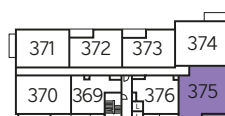
▲ View towards Central Park



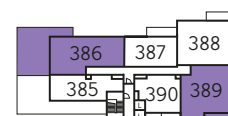
First Floor



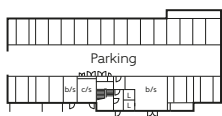
Third Floor



Fifth Floor



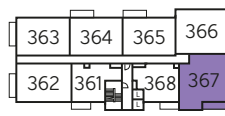
Seventh Floor



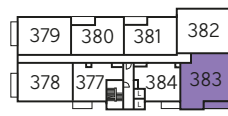
Ground Floor



Second Floor

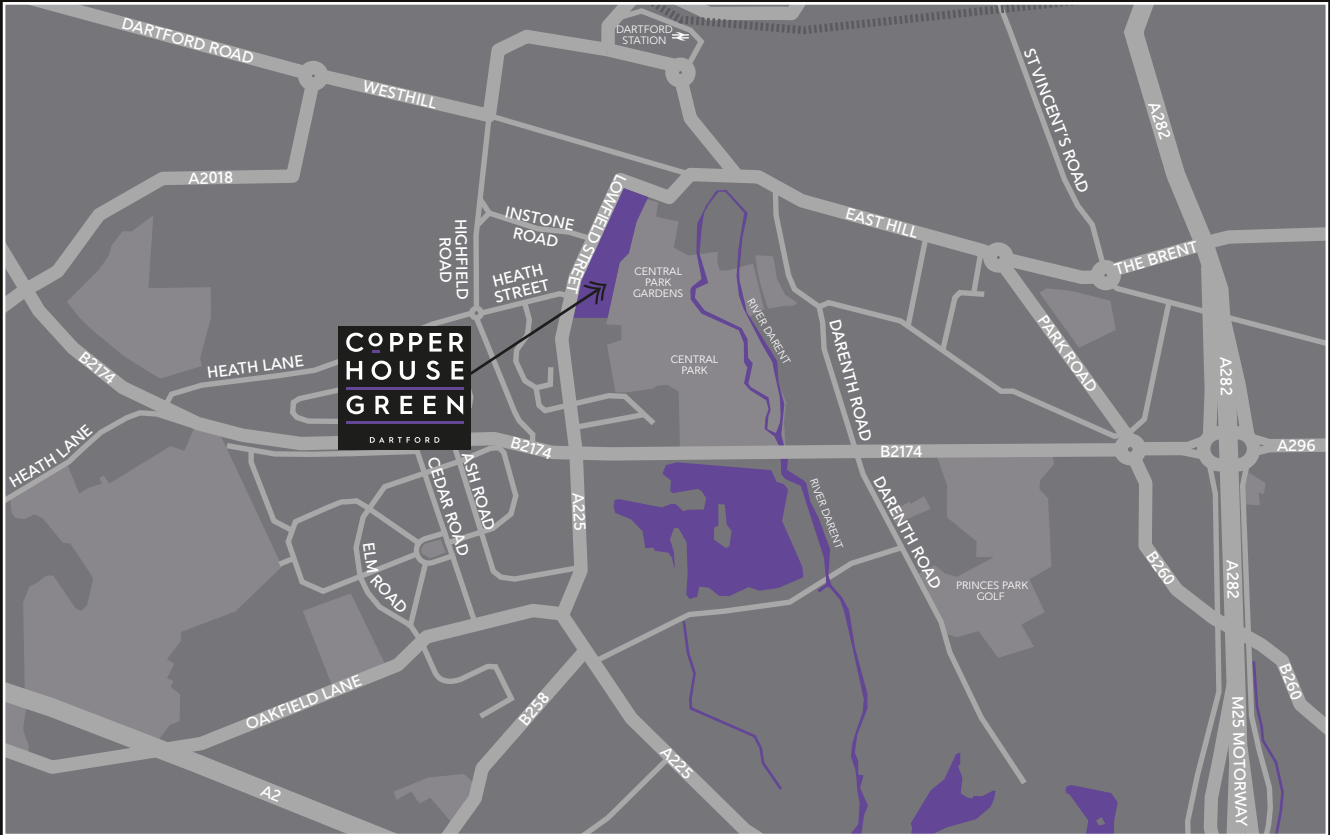


Fourth Floor



Sixth Floor

LOWFIELD STREET, DARTFORD DA1 1HJ



Map not to scale.