



29 Lime Tree Mews Rope Lane Shavington, Crewe, CW2 5DT

£950 PCM

A three bedroom town house in the popular village of Shavington.

To the ground floor: Entrance hall with tiled flooring, turning stairs to first floor with storage cupboard below and cloakroom with sink and W.C. Stylish fitted kitchen diner to the front of the house also with tiled flooring and appliances including integrated stainless steel electric oven, gas hob and extractor fan plus built in fridge freezer and dishwasher. Spacious lounge to the rear with double patio doors opening onto the rear garden.

To the first floor: landing with storage cupboard, large second double bedroom with two windows overlooking the rear garden, third double bedroom plus a luxury family bathroom with tiled flooring, bath and separate shower cubicle.

The second floor is a superb master bedroom suite, with large bedroom area with feature sloped ceilings, dressing room and en suite with shower cubicle.

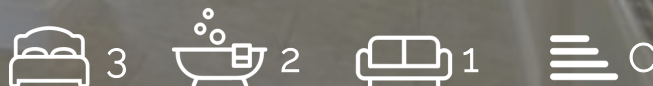
Rent excludes utilities and council tax is band D

- 3 bed townhouse over 3 floors
- Entrance hall, storage below stairs, downstairs cloakroom with toilet and sink
- Kitchen diner with integral fridge freezer, dishwasher, oven hob and extractor
- 1st floor comprises 2 double bedrooms and family bathroom with separate shower cubicle
- 2nd floor is the master suite comprising ensuite shower room and dressing area
- Enclosed rear garden

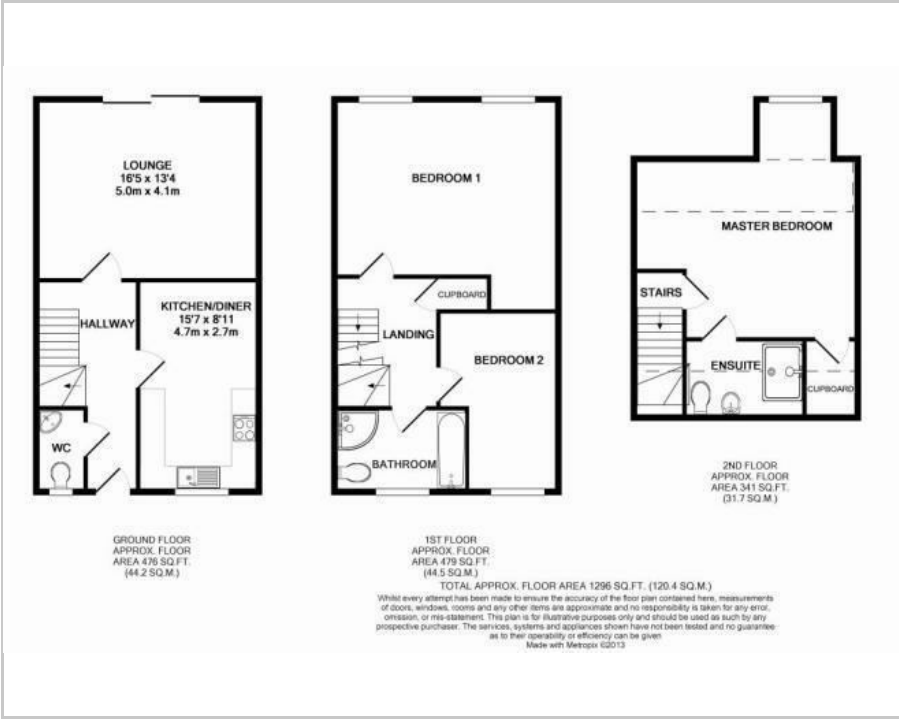
Viewing

Please contact our Wright Lettings & Management Office on 01270 216478

if you wish to arrange a viewing appointment for this property or require further information.



Floor Plan



These particulars, whilst believed to be accurate are set out as a general outline only for guidance and do not constitute any part of an offer or contract. Intending purchasers should not rely on them as statements of representation of fact, but must satisfy themselves by inspection or otherwise as to their accuracy. No person in this firms employment has the authority to make or give any representation or warranty in respect of the property.