



11 New Vale Road

Colwick, Nottingham, NG4 2EA

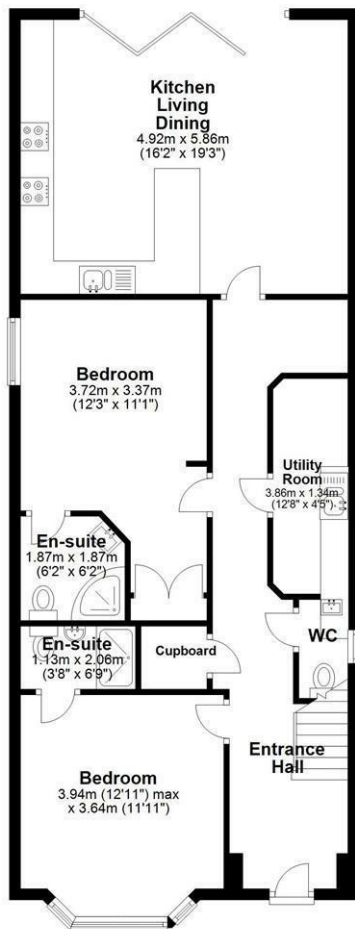
- Luxury Five Room Shared Property
- Stunning Decor & High End Finish
 - Ground Floor
 - Off Street Parking
- SINGLE OCCUPANCY Per Room
- Shared Open Plan Kitchen & Living Area
 - EN-SUITE
 - INCLUSIVE OF RENT



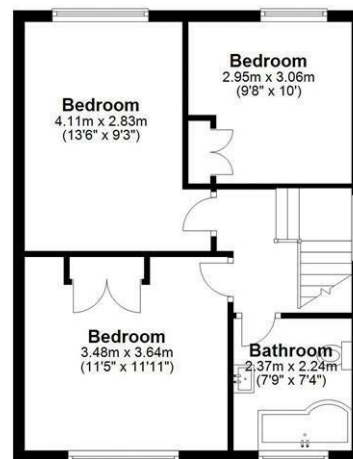
Local Authority
Council Tax Band
EPC Rating



Ground Floor 2.53
Approx. 92.4 sq. metres (994.6 sq. feet)



First Floor 2.66
Approx. 45.6 sq. metres (490.7 sq. feet)



Total area: approx. 138.0 sq. metres (1485.3 sq. feet)

Burton Joyce Office

111 Church Road, Burton Joyce,
Nottingham, NG14 5DJ

Contact

0115 855 66 22
lettings@johnsonsandpartners.co.uk
www.johnsonsandpartners.co.uk

Agents Note: Whilst every care has been taken to prepare these particulars, they are for guidance purposes only. All measurements are approximate and for general guidance purposes only and whilst every care has been taken to ensure accuracy, they should not be relied upon and potential buyers/tenants are advised to recheck the measurements.