



Lucas Court, Leamington Spa, CV32 5JL

**SHELDON
BOSLEY
KNIGHT**

LAND AND
PROPERTY
PROFESSIONALS

Property Description

*** AVAILABLE 15th JULY *** This spacious two double bedroom first floor apartment is located in this select and sought after gated development, about half a mile to the west of Leamington Spa town centre and convenient for access to the town centre, railway station and all major commute routes.

The accommodation comprises in brief: Hallway, generous living room with excellent space to create a dining area, kitchen with integrated appliances included (dishwasher, washing machine & fridge/freezer). Main bedroom with built in wardrobe and ensuite shower room, one further double bedroom, also with built in wardrobe and a main bathroom with full suite including shower over bath.

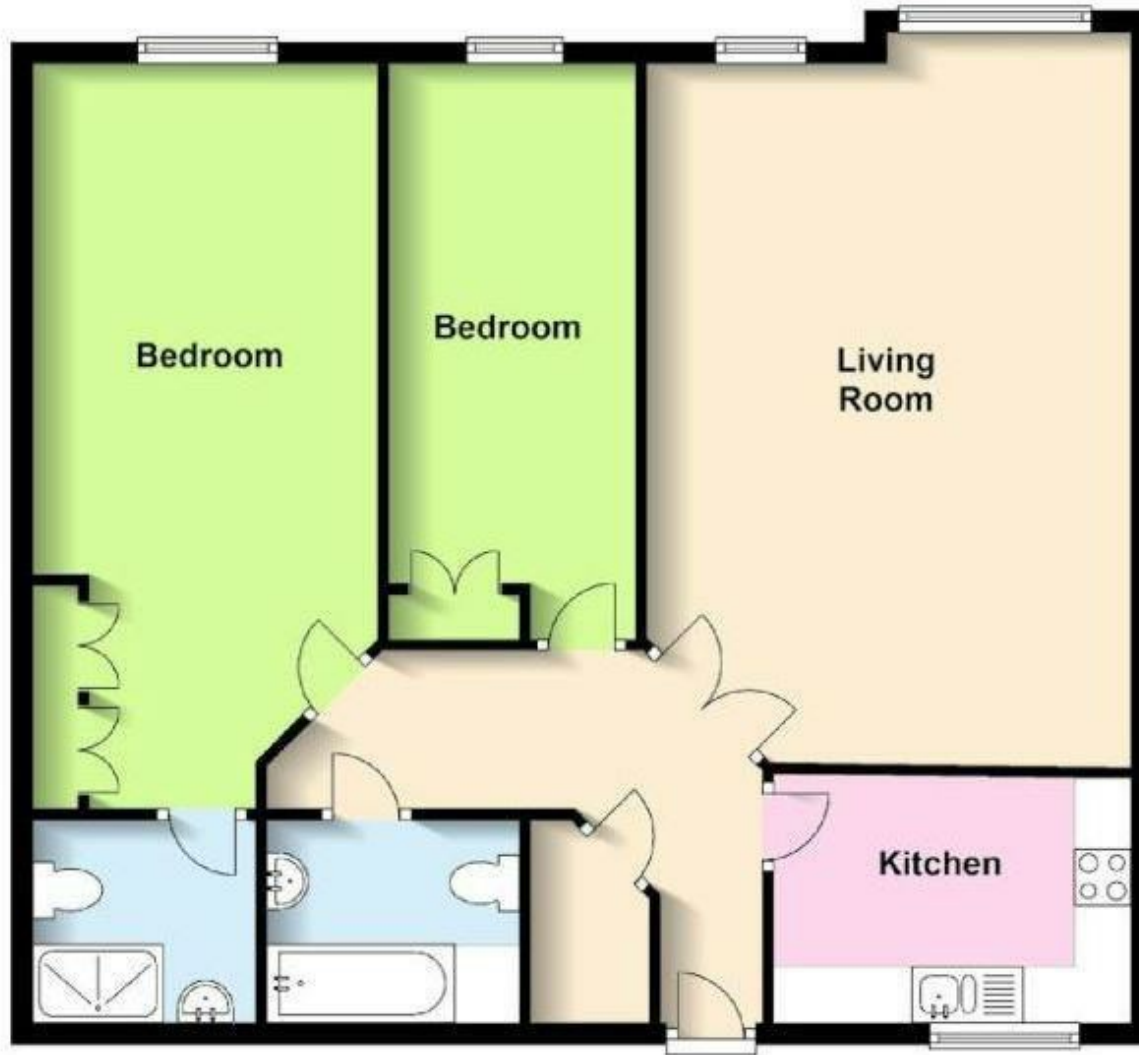
With pretty shared gardens, allocated parking for one and visitors parking available this property is offered UNFURNISHED. Council Tax Band D. Energy Rating C (NO PETS ALLOWED)





First Floor

Approx. 84.9 sq. metres (913.7 sq. feet)



Key Features

- AVAILABLE 15th JULY
- Leamington Spa
- Two Bedrooms, Two Bathrooms
- First Floor Flat
- Unfurnished
- Pretty Communal Gardens & Allocated Parking Space
- Close to Town Centre
- Energy Rating D
- Council Tax Band C
- NO PETS ALLOWED

£1,350 PCM