



The Moorings, Leamington Spa, CV31 3QA

Property Description

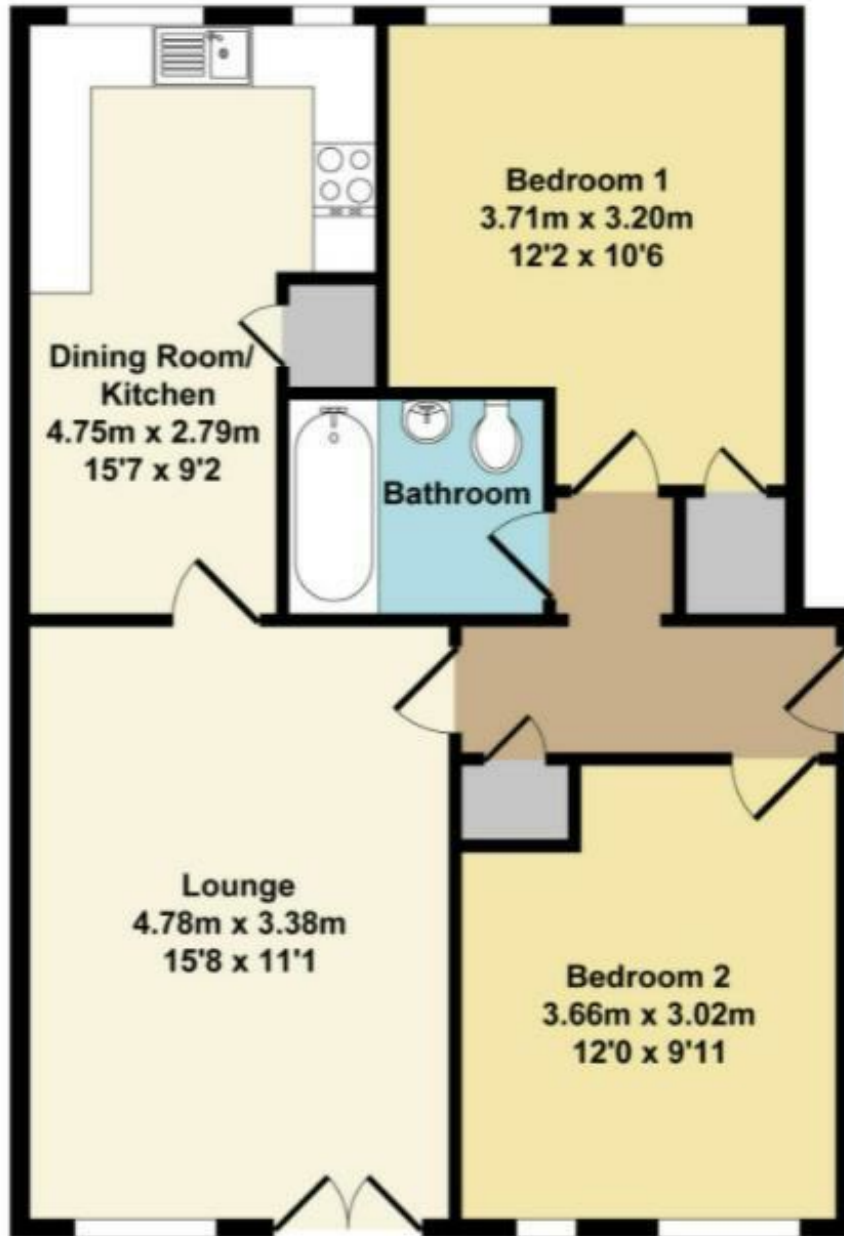
*** AVAILABLE 26th JULY *** Set within a private, secure gated community this ground floor 2 double bedroom apartment is excellently located to reach all amenities and major commute routes.

Modern presentation throughout and comprises in brief: Hallway with storage cupboard, spacious and light living room with wood effect laminate flooring and Juliet balcony looking over the communal gardens, breakfast kitchen with generous space for dining table and chairs, further storage cupboard and appliances included (washing machine, under counter fridge & freezer), two well proportioned double bedrooms, one with built in wardrobe, bathroom with full suite including shower over bath.

With residents parking and designated bicycle shelter this property is offered PART-FURNISHED. Council Tax Band C. Energy rating C.







Key Features

- AVAILABLE 26th JULY
- Leamington Spa
- 2 Double Bedrooms
- Ground Floor Apartment
- Part-Furnished
- Secure Gated Community
- Allocated Parking & Bicycle Shelter
- Close to Town Centre & Victoria Park
- Energy Rating C
- Council Tax Band C

£1,175 PCM