



Stoneleigh Road, Coventry, CV4 7AD

**SHELDON
BOSLEY
KNIGHT**

LAND AND
PROPERTY
PROFESSIONALS

Property Description

*** AVAILABLE 9th APRIL *** Stoneleigh Gardens is an exclusive, gated complex that boasts six luxury two-bedroom apartments. Stoneleigh Gardens takes its name from the generous rear garden mainly laid to lawn, that all the apartments have full use of. This novel outside space is completely private and secure, allowing the residents to make full use of it throughout the year. This recent conversion was carried out by the reputable Mackenzie Miller Homes, underlining Stoneleigh Gardens meticulous attention to detail, master-craftsmanship, and luxury living at the forefront of this build and design.

This apartment comprises in brief: deluxe kitchen with shaker cabinet doors and integrated appliances included (ceramic hob, electric oven, fridge/freezer, dishwasher and washing machine). Separate living room with like new sofa included. Two double bedrooms with king sized beds and mattresses each room included and carpeted throughout, bedroom 1 with ensuite shower room. Main bathroom with full suite including shower over bath.

The very sought after, tree lined Stoneleigh Road is located approx. 2.5 miles away from Kenilworth town centre, only 7 miles away from the thriving Leamington Spa town centre, and just over 5 miles away from Coventry City centre. Coventry train station conveniently sits just over 3 miles away allowing for direct access into London and other major cities, while access to the A46 is located at the end of the road, providing a direct route to the M40. With 2 allocated parking spaces and a communal pay per use electric charging point this property is offered PART-FURNISHED. Energy Rating D. Council Tax Band B.

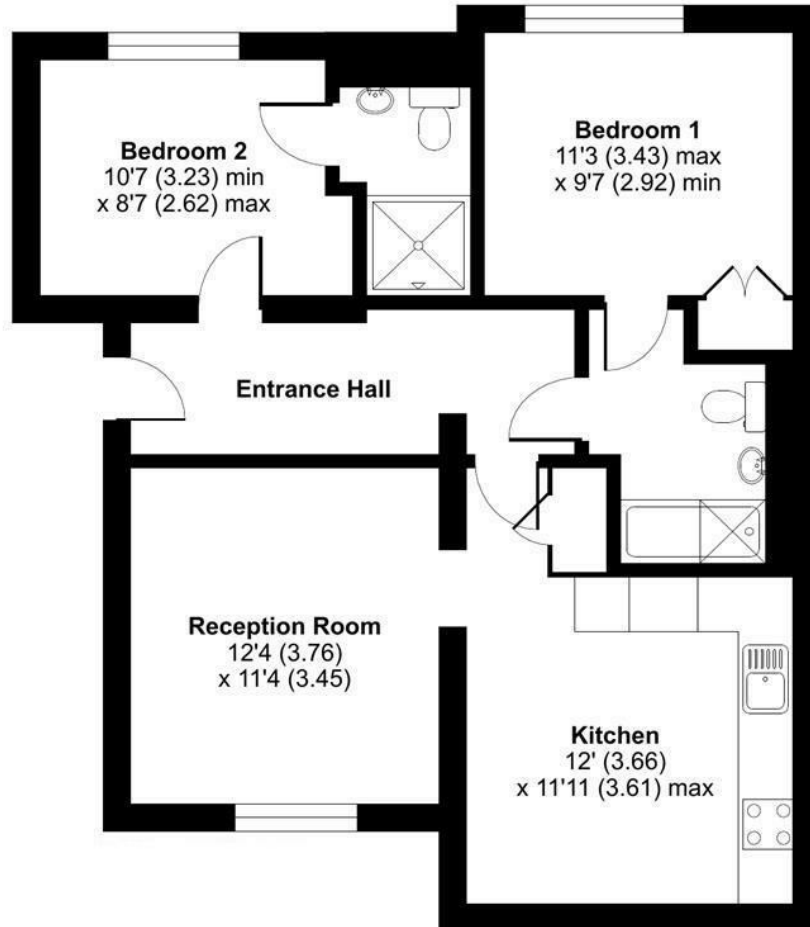




Stoneleigh Road, Coventry, CV4

Approximate Area = 749 sq ft / 69.6 sq m

For identification only - Not to scale



Key Features

- AVAILABLE 9th APRIL
- Stoneleigh Road, Coventry
- 2 Bedrooms, 2 Bathrooms
- 1st Floor Apartment
- Part-Furnished
- Walking Distance to Warwick University
- Exclusive Development & Luxury Finish
- Allocated Parking & Stunning Communal Grounds
- Energy Rating D
- Council Tax Band B



Floor plan produced in accordance with RICS Property Measurement Standards incorporating International Property Measurement Standards (IPMS2 Residential). © nichecom 2022. Produced for Sheldon Bosley Knight Ltd. REF: 826330

£1,315 PCM