

ENTRANCE HALLWAY Built in storage cupboard, wood flooring.

BATHROOM Panel enclosed bath, walk in shower with inset shower, low level w.c, wash basin with cupboards either side and fitted shelving, built in storage cupboard, extractor fan, inset spot lights, tiled floor.

BEDROOM ONE 15' 2" narrowing to 9'5" x 11' 3" (4.62m x 3.43m) Double glazed windows to rear and side aspect, built in cupboard.

BEDROOM TWO 11' 8" x 9' 2" (3.56m x 2.79m) Double glazed window to rear aspect, built in storage cupboard.

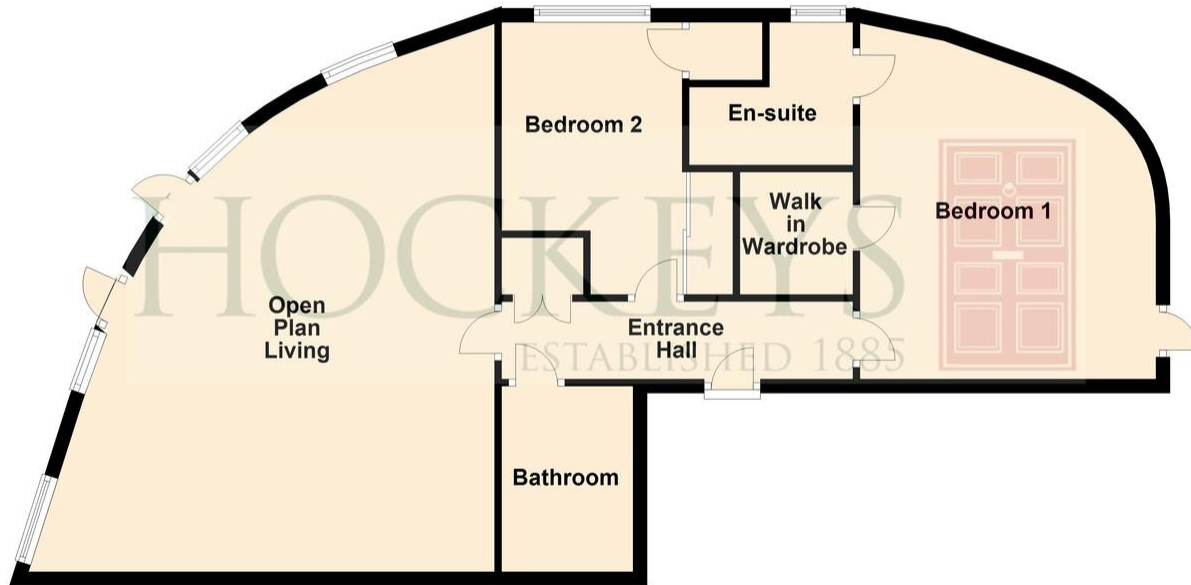
LIVING ROOM/KITCHEN 16' 8" max x 16' 8" (5.08m x 5.08m) Range of matching base and wall mounted units, integrated fridge, integrated freezer, built in oven, combination oven, integrated oven, electric hob, built in extractor canopy, splash backs, integrated washing machine, inset spot lights, partial wood flooring and tiling.

BALCONY Large wrap around balcony overlooking the main square and to the side and rear.





Ground Floor



IMPORTANT: Hockeys (Cambridge) Ltd for themselves and for the vendors or lessors of this property whose agents they are give notice that the particulars are produced in good faith and are set out as a general guide only and do not constitute any part of a contract and no person in the employment of Hockeys (Cambridge) Ltd has any authority to make or give any representation or warranty in relation to this property .

10 Mill Road CB1 2AD
Telephone: 01223 356054
Email: cambridge@hockeys.co.uk

www.hockeys.co.uk

HOCKEYS
ESTABLISHED 1885





128 Glenalmond Avenue, Cambridge,
CB2 8DD

£575,000 Leasehold

A rare opportunity to own this large two double bedroom apartment that comes with three balcony sitting areas, a large open plan living space and an underground parking space. This home is situated a short distance to the Cambridge Train Station, making it perfect for any commuter looking to live in the city centre.



HOCKEYS
ESTABLISHED 1885

