



18-20 Northway, Scarborough YO11 1JL
£14,000 Per Annum

CPH
COMMERCIAL

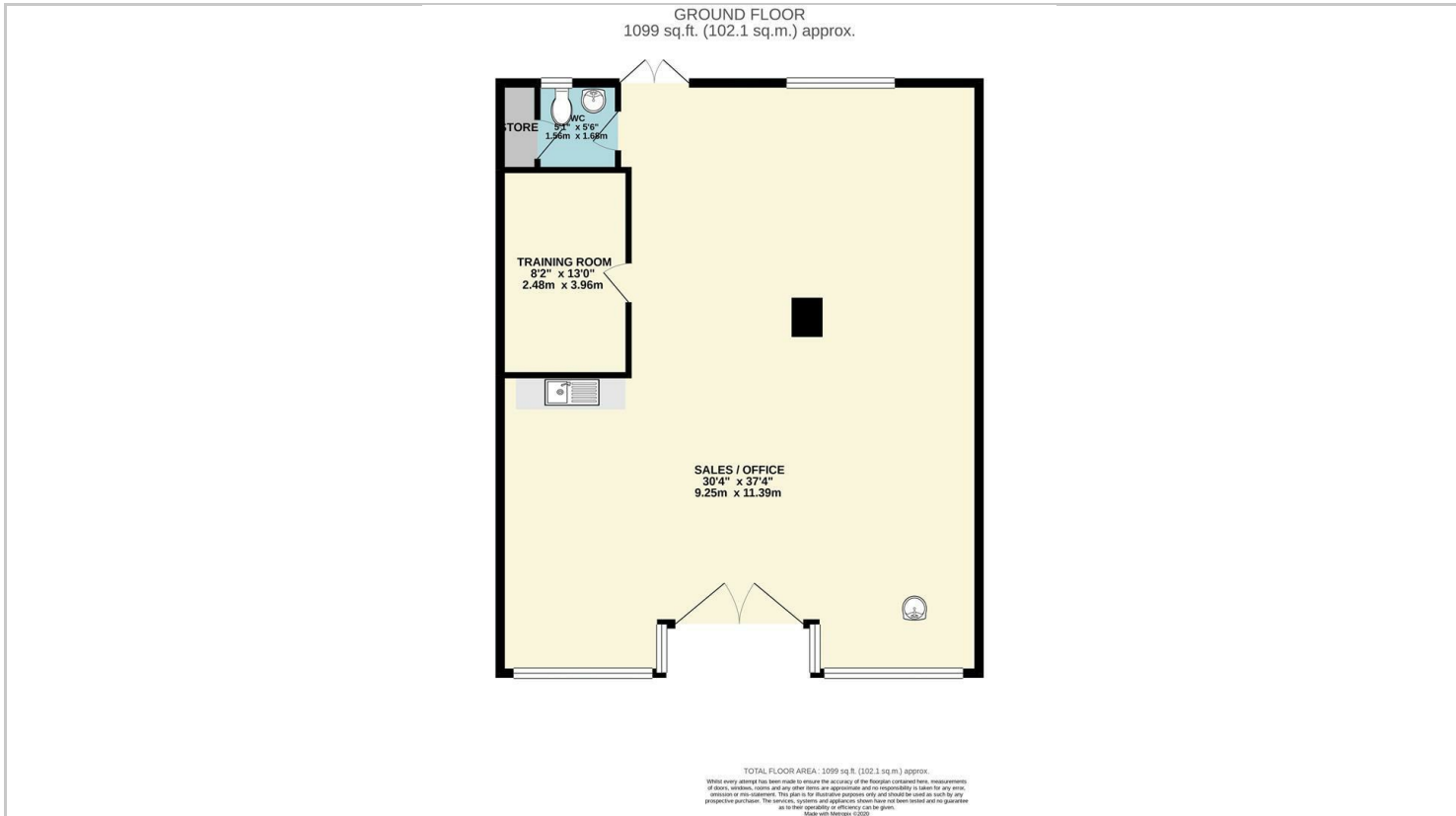
18-20 Northway, Scarborough YO11 1JL

* Current tenant moving to new premises shortly *

Number 18-20 Northway comprises a ground floor retail/office unit with a prominent and generous display frontage. The unit extends to an area of approximately 1104 sq ft and as well as a generous sales area, the unit also benefits from a cellular office and W.C. Double loading doors are provided to the rear of the property. The unit is available on a new commercial lease for a minimum 3 year term. VAT and an annual Service Charge are payable. Further details are available on request.

EPC: Band D

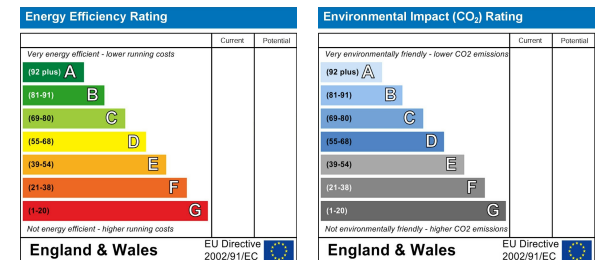
Business Rates: Rateable Value - £11,000 (The property qualifies for 100% Small Business Rates Relief)



Area Map



Energy Efficiency Graph



CPH Property Services
19 St.Thomas Street, Scarborough YO11 1DY
e.sales@cphproperty.co.uk | cphproperty.co.uk

NOTE: These particulars are intended only as a guide to prospective Purchasers to enable them to decide whether to make further enquiries with a view to taking up negotiations but they are otherwise not intended to be relied upon in any way for any purpose whatsoever and accordingly neither their accuracy nor the continued availability of the property is in any way guaranteed and they are furnished on the express understanding that neither the Agents nor the Vendors are to be or become under any liability or claim in respect of their contents. Any prospective Purchaser must satisfy himself by inspection or otherwise as to the correctness of the particulars contained. C132