

  
**PROMINENCE**  
ESTATES



**RESIDENTIAL**  
PROPERTY EXPERTS

COVENTRY, WARWICKSHIRE  
& LEAMINGTON SPA

**GULSON ROAD,**  
STOKE, COVENTRY, CV1 2JD

**£3,450 PCM**

GULSON ROAD



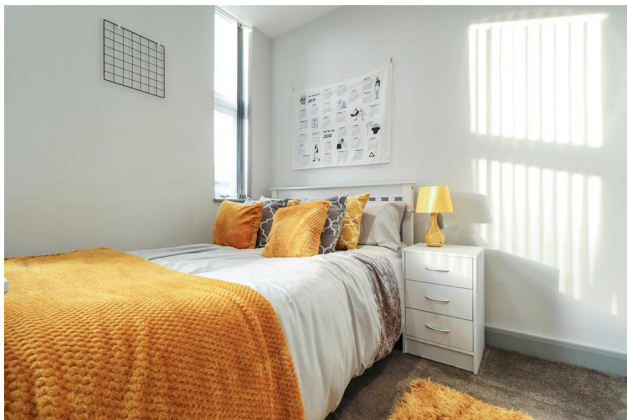
**PROMINENCE**  
— ESTATES —

Luxuriously Modern 6 Bedroom Student House With En-Suite Bedrooms. **BILLS INCLUDED + LED TV.** 5 Minutes Walk From University - This is a brand new, top spec and luxurious house which has undergone extensive renovation providing students with a perfect place to live. The property comprises; modern open plan lounge area with LED TV and kitchen benefiting from breakfast bar with stools, 2 integrated microwaves, dish washer, large range cooker, 2 fridge/freezers, washing machine and dryer. The house comes fully furnished with built in wardrobes, beds, desks and chairs. The property also benefits from a low maintenance landscaped garden with artificial lawn and seating area.

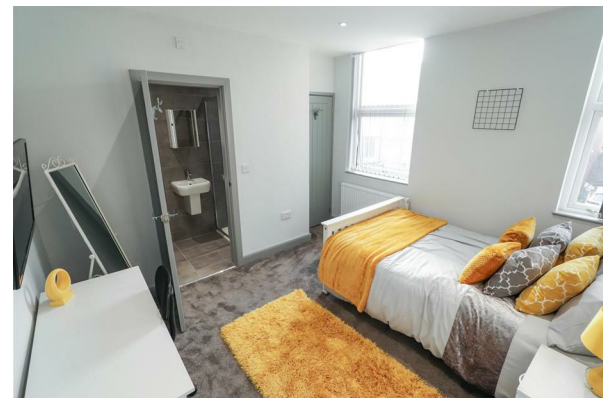
Utility bills included: Gas, Electricity, Water, WiFi.

For further information regarding this property

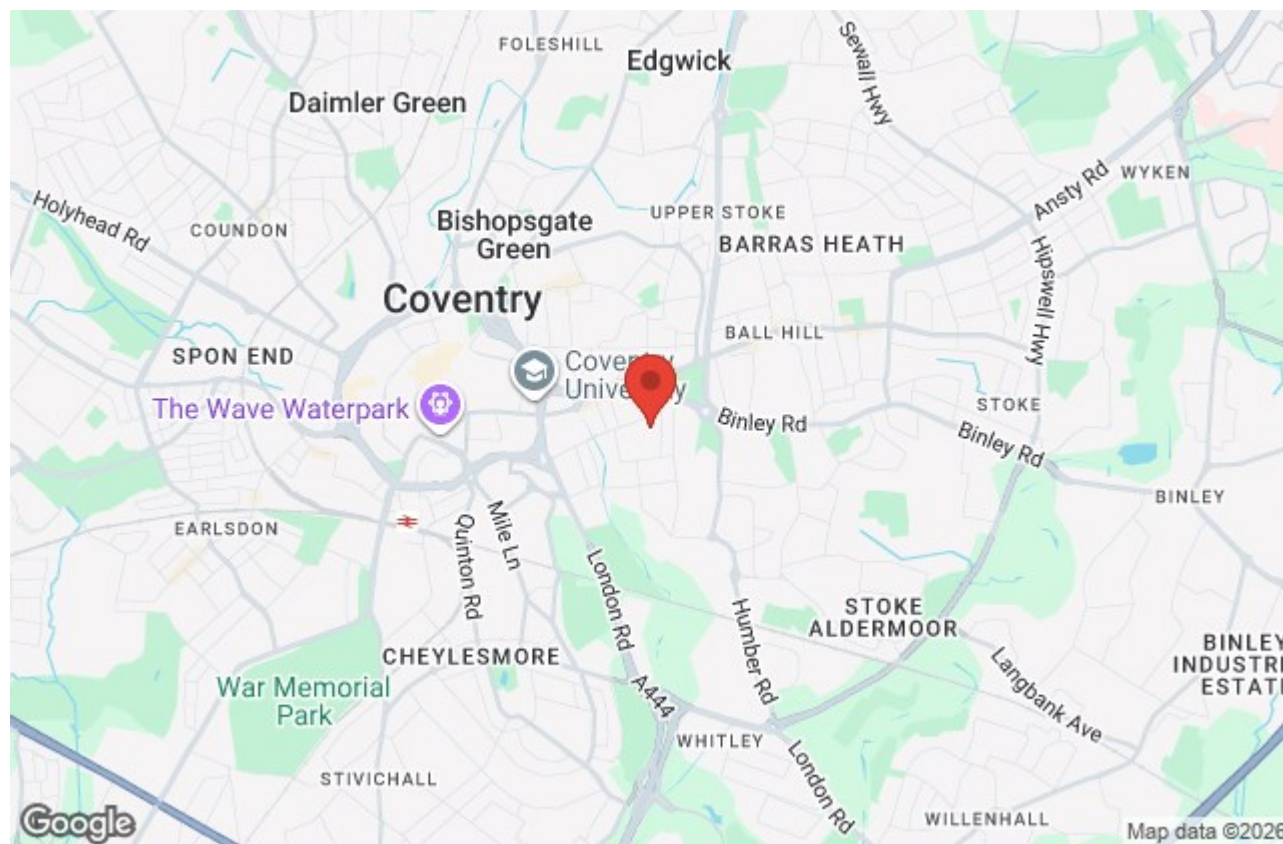
or to book your viewing please call our Coventry office today.











Prominence Estates  
5 Queen Isabella Avenue,  
Cheylesmore,  
Coventry,  
CV3 5GE

02476 309 826  
[lettings@prominenceestates.com](mailto:lettings@prominenceestates.com)  
[www.prominenceestates.com](http://www.prominenceestates.com)

  
**PROMINENCE**  
— ESTATES —