

  
**PROMINENCE**  
ESTATES



**RESIDENTIAL**  
PROPERTY EXPERTS

COVENTRY, WARWICKSHIRE  
& LEAMINGTON SPA

**RANBY ROAD,**  
COVENTRY, CV2 4GS

**£450 PER CALENDAR**

RANBY ROAD

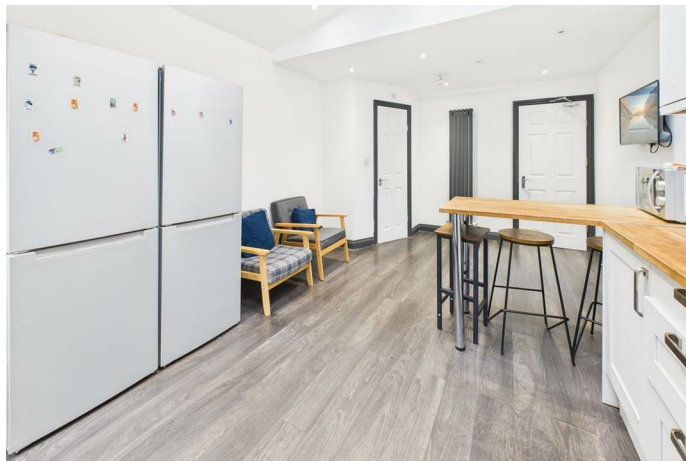


**PROMINENCE**  
— ESTATES —

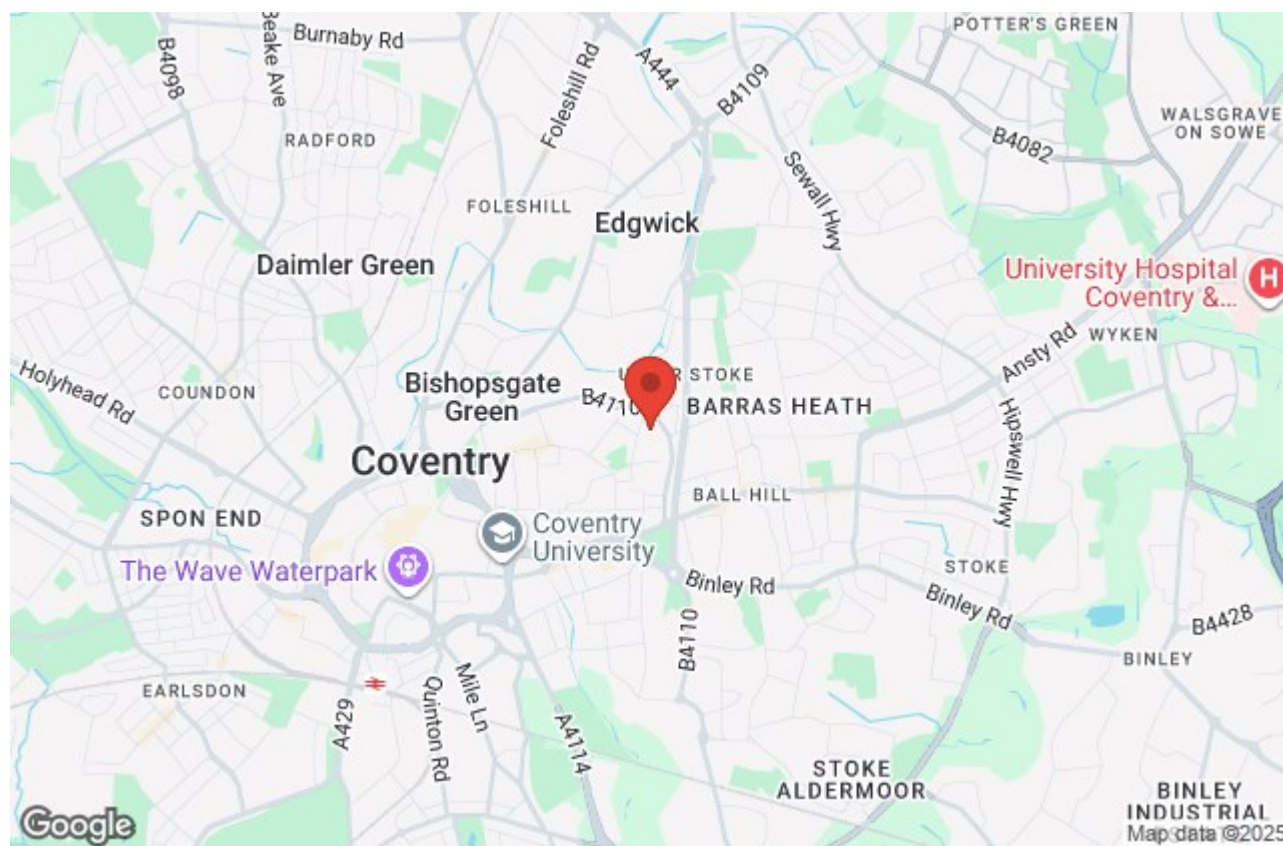
**\*\*0% DEPOSIT OPTION AVAILABLE \*\***We are thrilled to present these amazing, modern En-suite room - **BILLS ARE INCLUDED**. This property is beautifully designed and conveniently located **NEAR COVENTRY CITY CENTRE**, and a short cycle or bus trip to surrounding biggest employers in the city, making this perfect for the working professional. There is also ample free street parking. Many supermarkets, retailers, gyms, etc all within walking distance and there are bus stops only minutes away.



The rooms come fully furnished with modern furniture with plenty of **STORAGE**, including, comfortable bed, wardrobe and desk with a chair. Each room also comes with a modern fitted **PRIVATE en-suite** shower room.







Prominence Estates  
5 Queen Isabels Avenue,  
Cheylesmore,  
Coventry,  
CV3 5GE

02476 309 826  
[lettings@prominenceestates.com](mailto:lettings@prominenceestates.com)  
[www.prominenceestates.com](http://www.prominenceestates.com)

  
**PROMINENCE**  
— ESTATES —