



**PROMINENCE**  
ESTATES



**RESIDENTIAL**  
PROPERTY EXPERTS

COVENTRY, WARWICKSHIRE  
& LEAMINGTON SPA

**MARLBOROUGH ROAD,**  
STOKE, COVENTRY, CV2 4EN

**£550 PCM**



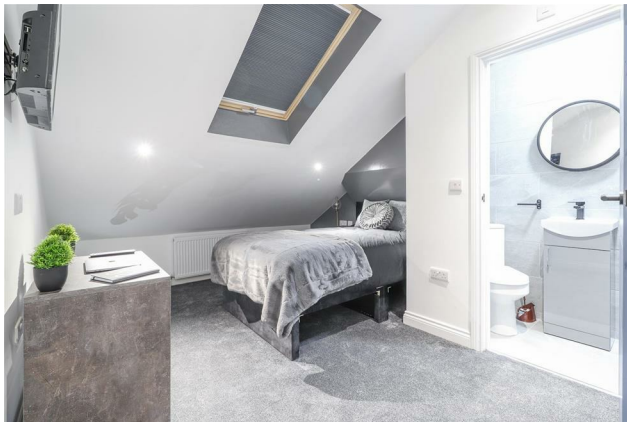
MARLBOROUGH ROAD



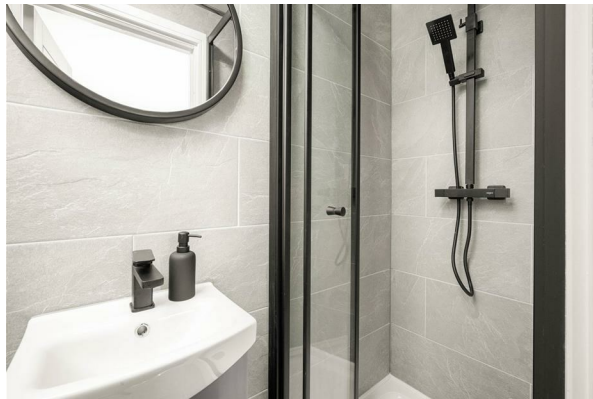
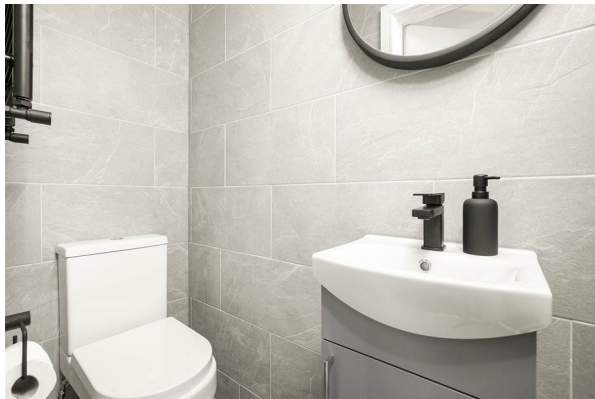
  
**PROMINENCE**  
— ESTATES —

**\*\*Single Occupancy Only\*\*** WOW.. Deluxe, Stylish and Newly Renovated Rooms With Modern En-Suites - **BILLS INCLUSIVE**. Located only a 15 minute walk into Coventry city centre and a short commute to Coventry train station, you do not want to miss out on reserving these spectacular rooms. The property has been professionally designed by an interior designer and is perfect for those wanting to live within a commutable distance to; Coventry City Centre, Coventry Train Station, Coventry University and University Hospital Coventry & Warwickshire. We have a range of fully furnished en-suite rooms to choose from. The rooms benefit from being fully furnished with beds and orthopedic mattresses, wardrobe, TV and a desk and chair. Each room also comes equipped with a modern en-suite shower room with rainfall shower. The house further benefits from a luxuriously spacious and

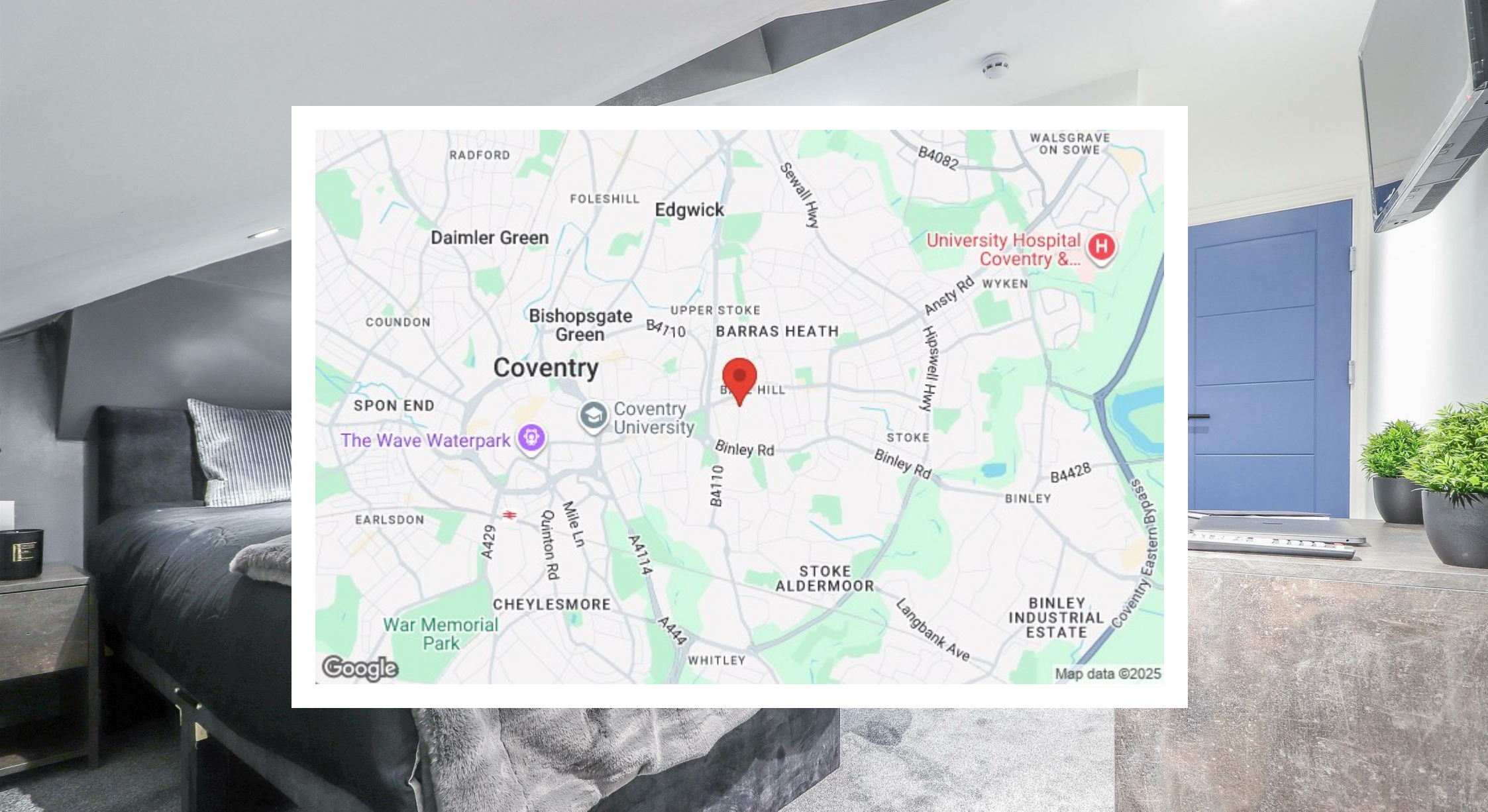
open plan communal dining room and shared kitchen perfect for those wanting to socialise or work from home.











Prominence Estates  
5 Queen Isabells Avenue,  
Cheylesmore,  
Coventry,  
CV3 5GE

02476 309 826  
[lettings@prominenceestates.com](mailto:lettings@prominenceestates.com)  
[www.prominenceestates.com](http://www.prominenceestates.com)

  
**PROMINENCE**  
— ESTATES —