

  
**PROMINENCE**  
ESTATES



**RESIDENTIAL**  
PROPERTY EXPERTS

COVENTRY, WARWICKSHIRE  
& LEAMINGTON SPA

**THE MARTYRS CLOSE,**  
CHEYLESMORE, COVENTRY, CV3 5FP

**£285,000**



## THE MARTYRS CLOSE



# PROMINENCE

— ESTATES —

A beautifully presented three bedroom mid-terraced home with a private driveway and a detached home office in the rear garden, located in the sought-after area of Cheylesmore, Coventry. This modern property is finished to a high standard throughout and offers a fantastic blend of contemporary living and practical outdoor space, ideal for families and professionals alike.

The property features a spacious and stylish living area, a well-appointed kitchen, and three comfortable bedrooms. The bathroom is finished with modern fittings, and the interior is light and airy throughout. The rear garden is both low maintenance and functional, offering a generous patio, while the detached home office provides the perfect work-from-home solution or creative space.

Situated in CV3 5FP, this home benefits from excellent local amenities including a variety of shops,

supermarkets, and eateries. Families will appreciate the proximity to reputable primary and secondary schools, while convenient access to the A45 and A46 offers easy connections to the city centre, Warwick, and Leamington Spa. Coventry railway station is also within a short drive, providing direct links to London and Birmingham.

Early viewing is highly recommended to appreciate all that this fantastic home has to offer.

[Living Room](#)

[Kitchen/Dining Room](#)

[Bedroom One](#)

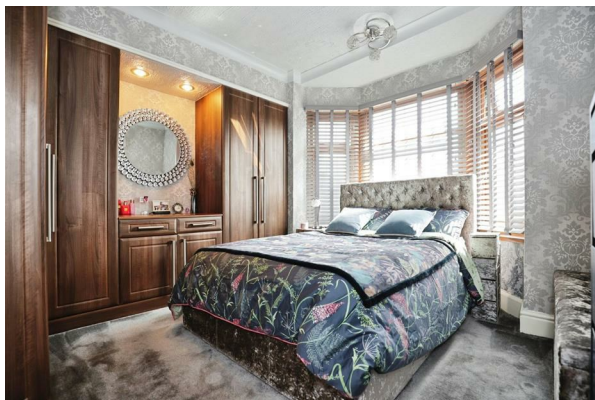
[Bedroom Two](#)

[Bedroom Three](#)

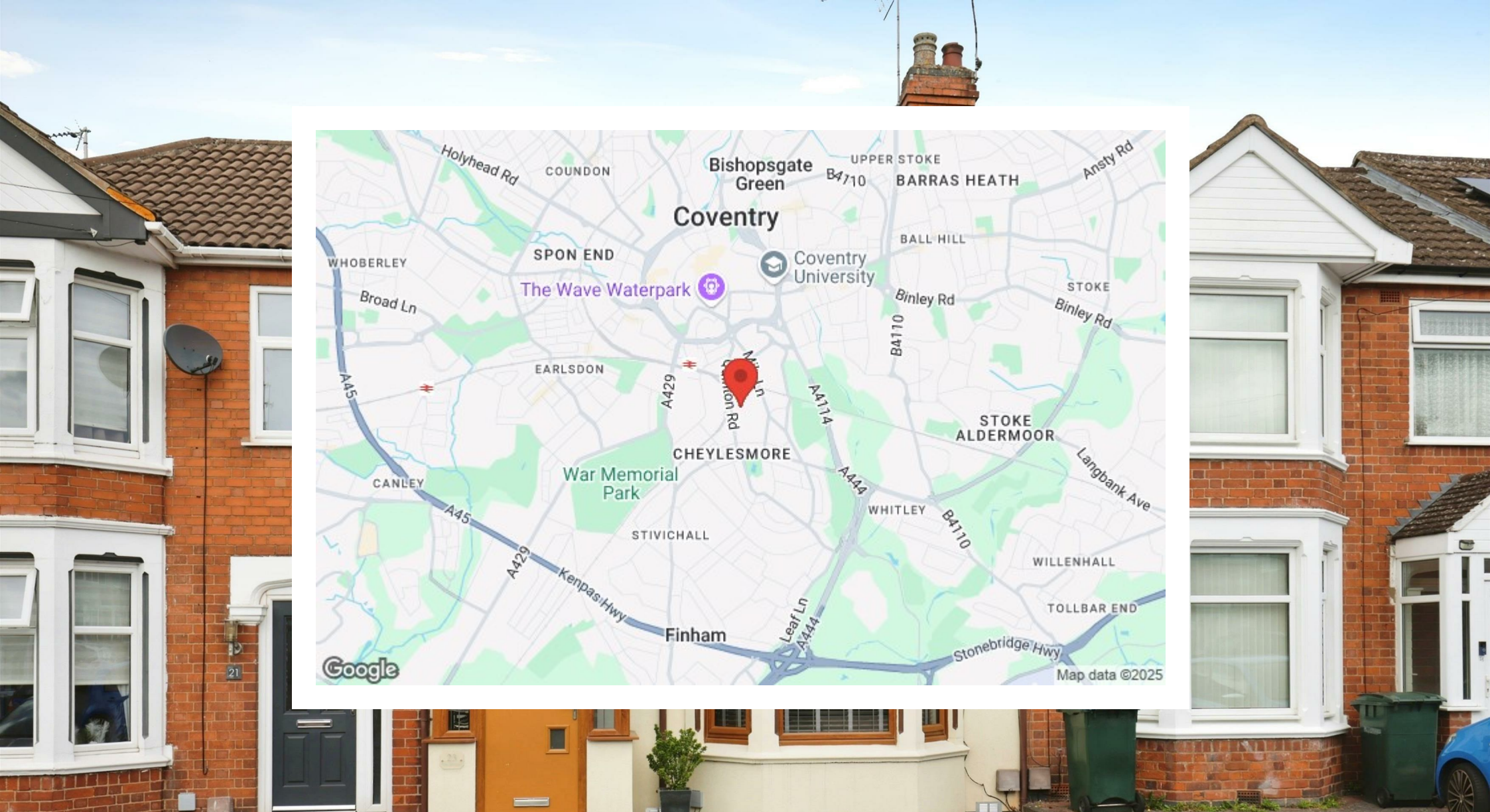
[Bathroom](#)











Prominence Estates  
5 Queen Isabels Avenue,  
Cheylesmore,  
Coventry,  
CV3 5GE

02476 309 826  
[lettings@prominenceestates.com](mailto:lettings@prominenceestates.com)  
[www.prominenceestates.com](http://www.prominenceestates.com)

  
**PROMINENCE**  
— ESTATES —