



  
**PROMINENCE**  
ESTATES



**RESIDENTIAL**  
PROPERTY EXPERTS

COVENTRY, WARWICKSHIRE  
& LEAMINGTON SPA

**DEAN STREET,**  
COVENTRY, CV2 4FD

**£850 PER CALENDAR**

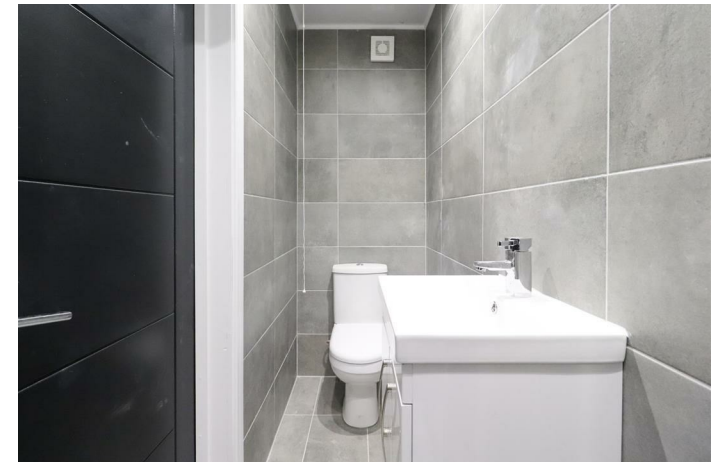
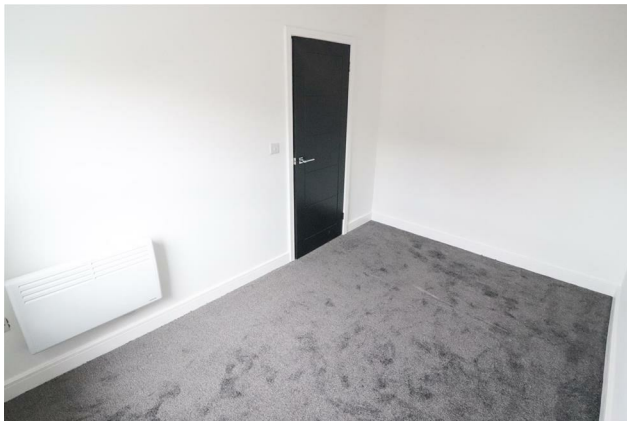
DEAN STREET



**PROMINENCE**  
— ESTATES —

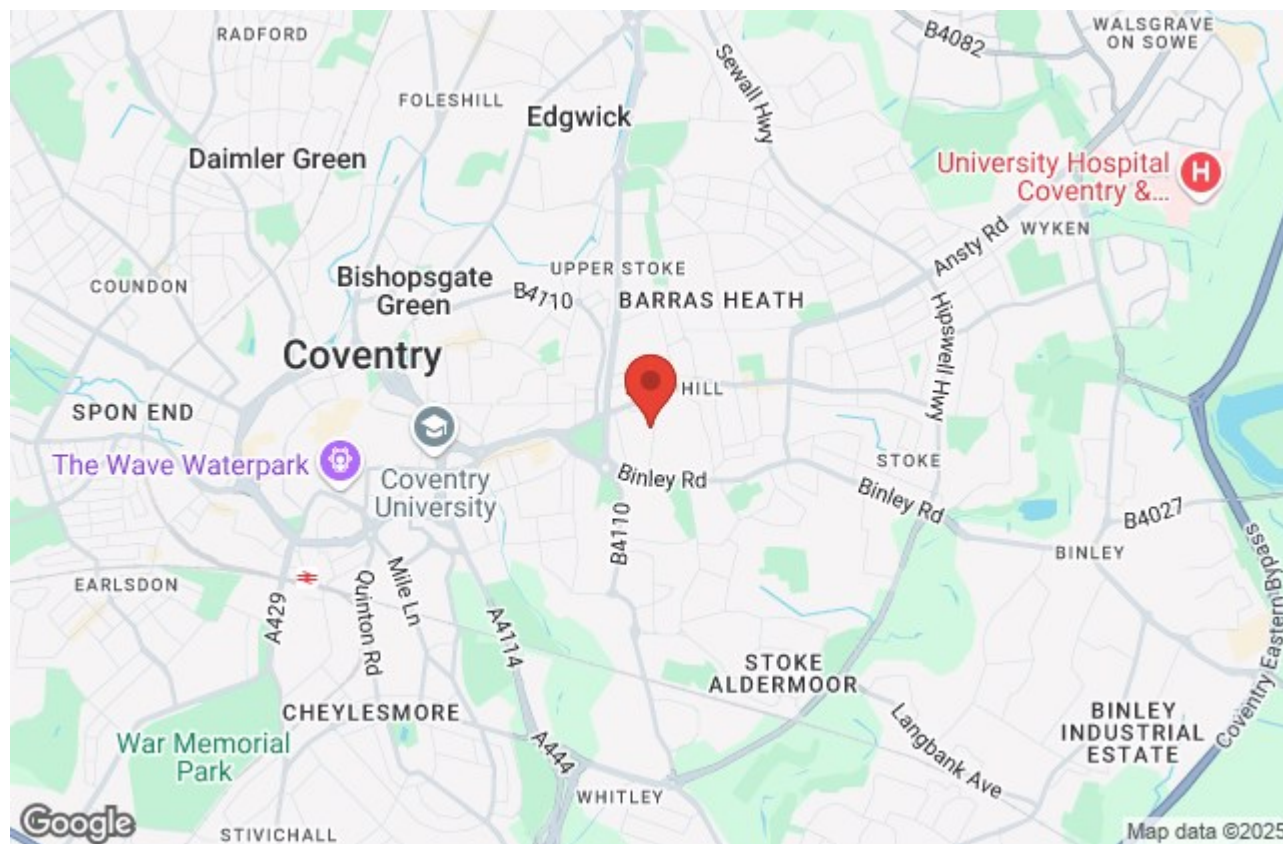
Introducing a newly refurbished and stylish 1 bedroom flat ideally situated near the city centre with convenient access to hospital bus routes. This modern apartment offers a fresh and contemporary living space, boasting a brand new interior that exudes comfort and functionality. The open-plan design maximises the use of space, creating a welcoming atmosphere perfect for singles or couples. With proximity to the city centre and easily accessible hospital transportation options, this flat ensures convenience and an excellent quality of life for its residents. Experience urban living at its finest in this thoughtfully updated and well-located 1 bedroom flat.

To Arrange a viewing please call 02476 309 826









Prominence Estates  
5 Queen Isabels Avenue,  
Cheylesmore,  
Coventry,  
CV3 5GE

02476 309 826  
[lettings@prominenceestates.com](mailto:lettings@prominenceestates.com)  
[www.prominenceestates.com](http://www.prominenceestates.com)

  
**PROMINENCE**  
— ESTATES —