


PROMINENCE
ESTATES



RESIDENTIAL
PROPERTY EXPERTS

COVENTRY, WARWICKSHIRE
& LEAMINGTON SPA

SIR HENRY PARKES ROAD,
CANLEY, COVENTRY, CV4 8GG

£5,005 PER CALENDAR

SIR HENRY PARKES ROAD




PROMINENCE
— ESTATES —

7 BEDROOM PROPERTY ALL WITH EN SUITE
ROOMS!!!!!!

£165PPW!!!

Experience convenient and comfortable student living with this charming en-suite student property available for rent. ** ALL BILLS INCLUDED** Located in close proximity to Warwick University and essential amenities, this well-designed residence offers a perfect balance of privacy, community, and modern amenities, catering specifically to the needs of students.

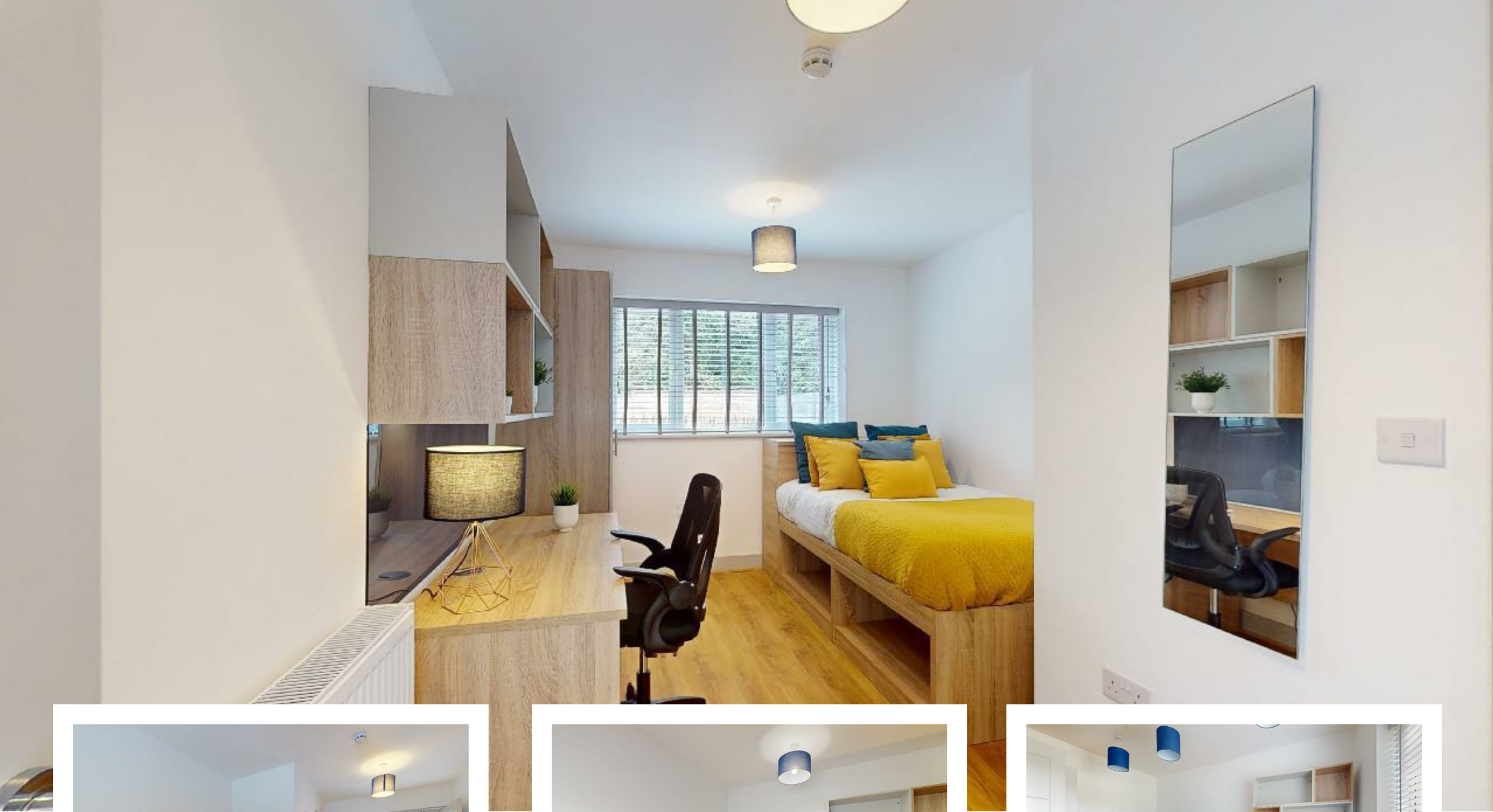
Shared Common Areas: Along with the en-suite, students have access to shared common areas such as a communal kitchen and a lounge space, perfect for socializing and building connections.

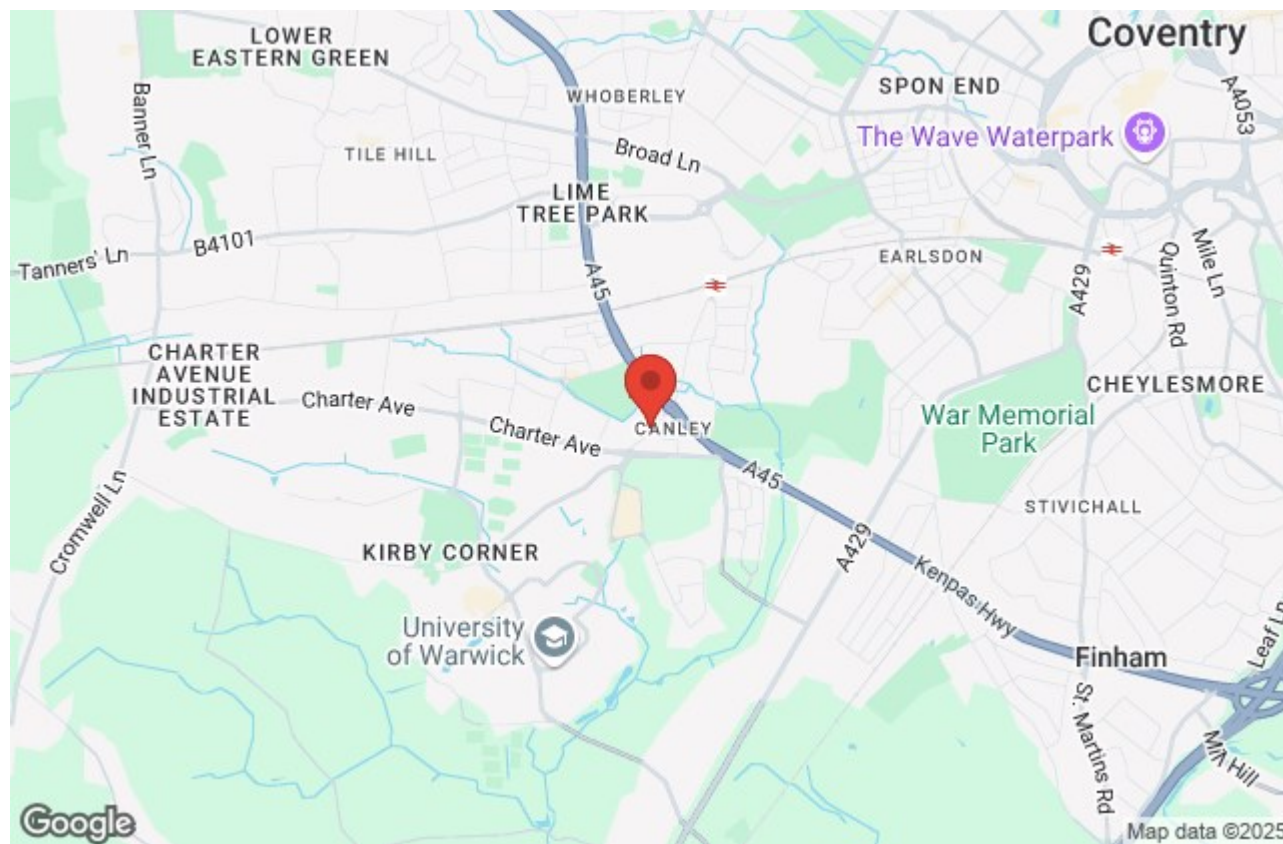
To Arrange a viewing please call Prominence Estates on 02476 309 826



Ideal for students, this en-suite property combines practicality with a warm and inviting ambiance. The bedroom comes fully furnished with a private bathroom, providing a personal space for focused study and relaxation. The thoughtfully arranged interiors ensure a seamless blend of comfort and functionality.







Prominence Estates
5 Queen Isabels Avenue,
Cheylesmore,
Coventry,
CV3 5GE

02476 309 826
lettings@prominenceestates.com
www.prominenceestates.com


PROMINENCE
— ESTATES —