

  
**PROMINENCE**  
ESTATES



**RESIDENTIAL**  
PROPERTY EXPERTS

COVENTRY, WARWICKSHIRE  
& LEAMINGTON SPA

**HUGH ROAD,**  
COVENTRY, CV3 1AE

**£1,200**

HUGH ROAD



**PROMINENCE**  
— ESTATES —

This well-presented four-bedroom terraced home offers spacious double bedrooms throughout and comes fully furnished, making it an ideal choice for a large working professional family. Benefitting from excellent transport links and located just a short distance from Coventry city centre, this property also boasts on-street parking and a private, low-maintenance rear garden.

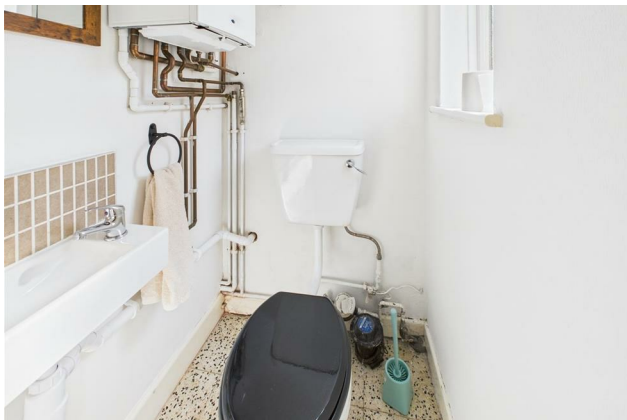
The home is thoughtfully laid out, providing generous living accommodation. Each bedroom is double in size, offering ample space and comfort. The property features a fully fitted kitchen, a modern bathroom, and a convenient downstairs W/C, with everything you need to move straight in.

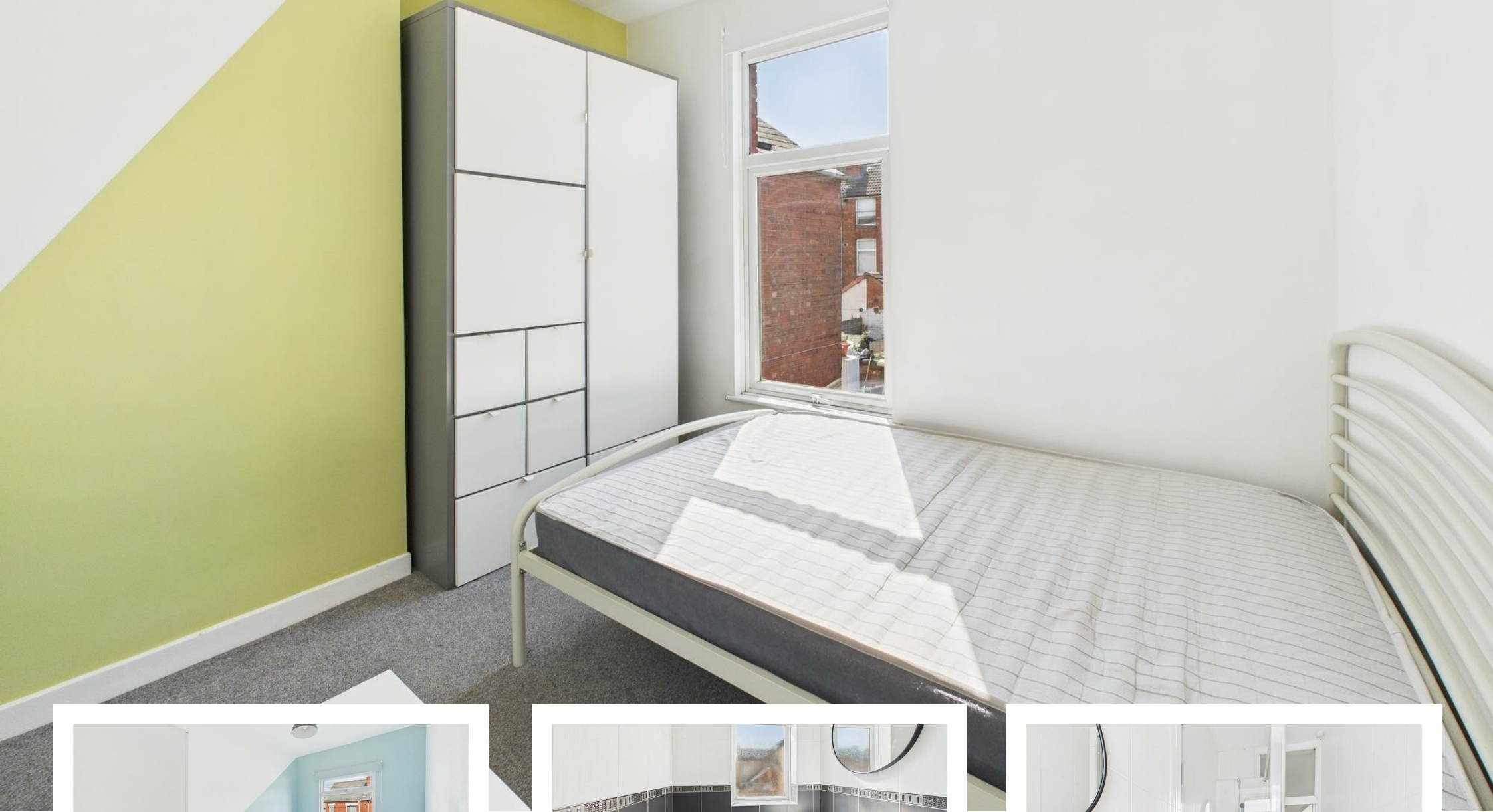
Conveniently situated near a variety of local

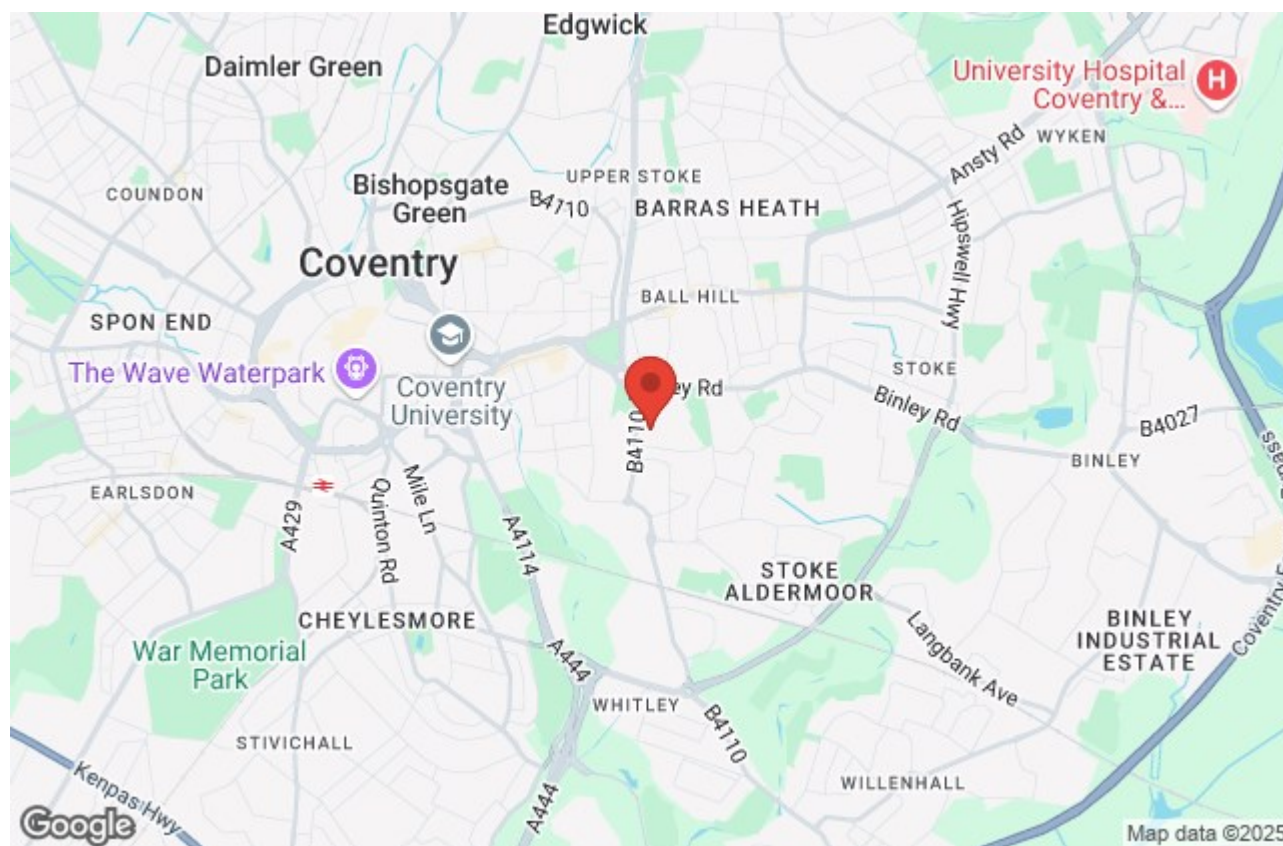
amenities, residents will find several highly regarded schools in close proximity. Gosford Park Primary School is approximately 330 yards away, while St Anne's Catholic Primary School is also nearby. For secondary education, Blue Coat Church of England School and Music College is within easy reach.

The area also offers a selection of shops and services. Humber Road, just around the corner, features various businesses including takeaways and convenience stores. Additionally, the nearby Binley Road and Walsgrave Road provide access to supermarkets, pharmacies, and other essential retailers.

With ample living space and a superb location close to schools and shopping facilities, this rental opportunity is not to be missed.







Prominence Estates  
5 Queen Isabels Avenue,  
Cheylesmore,  
Coventry,  
CV3 5GE

02476 309 826  
[lettings@prominenceestates.com](mailto:lettings@prominenceestates.com)  
[www.prominenceestates.com](http://www.prominenceestates.com)

  
**PROMINENCE**  
— ESTATES —