


PROMINENCE
— ESTATES —



RESIDENTIAL
PROPERTY EXPERTS

COVENTRY, WARWICKSHIRE
& LEAMINGTON SPA

NORFOLK STREET,
CITY CENTRE, COVENTRY, CV1 3BX

£1,100 PER CALENDAR

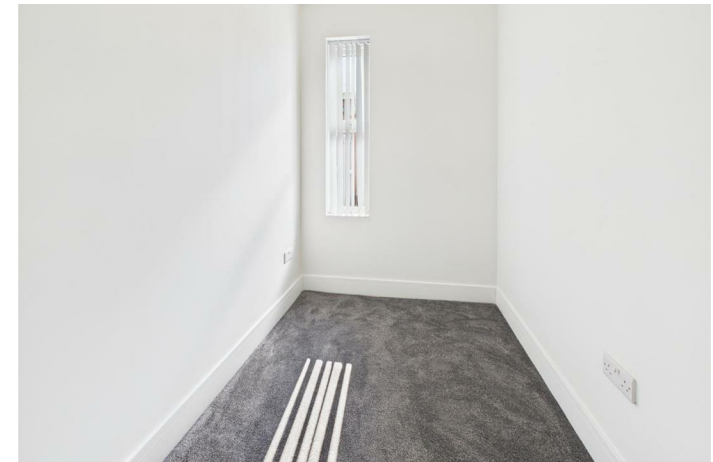
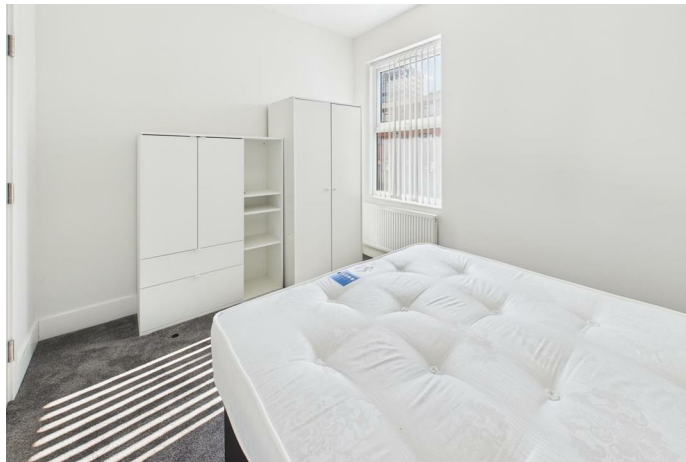
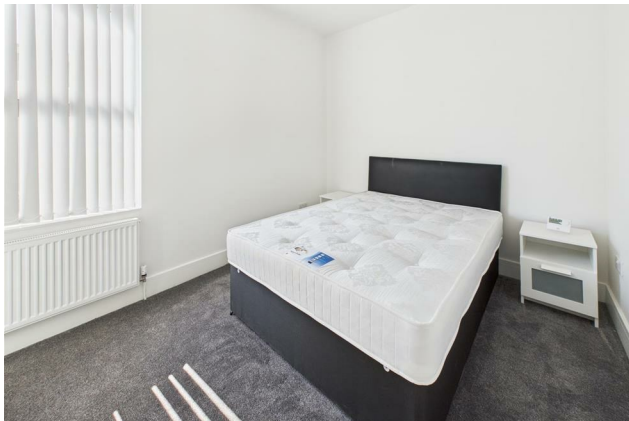
NORFOLK STREET



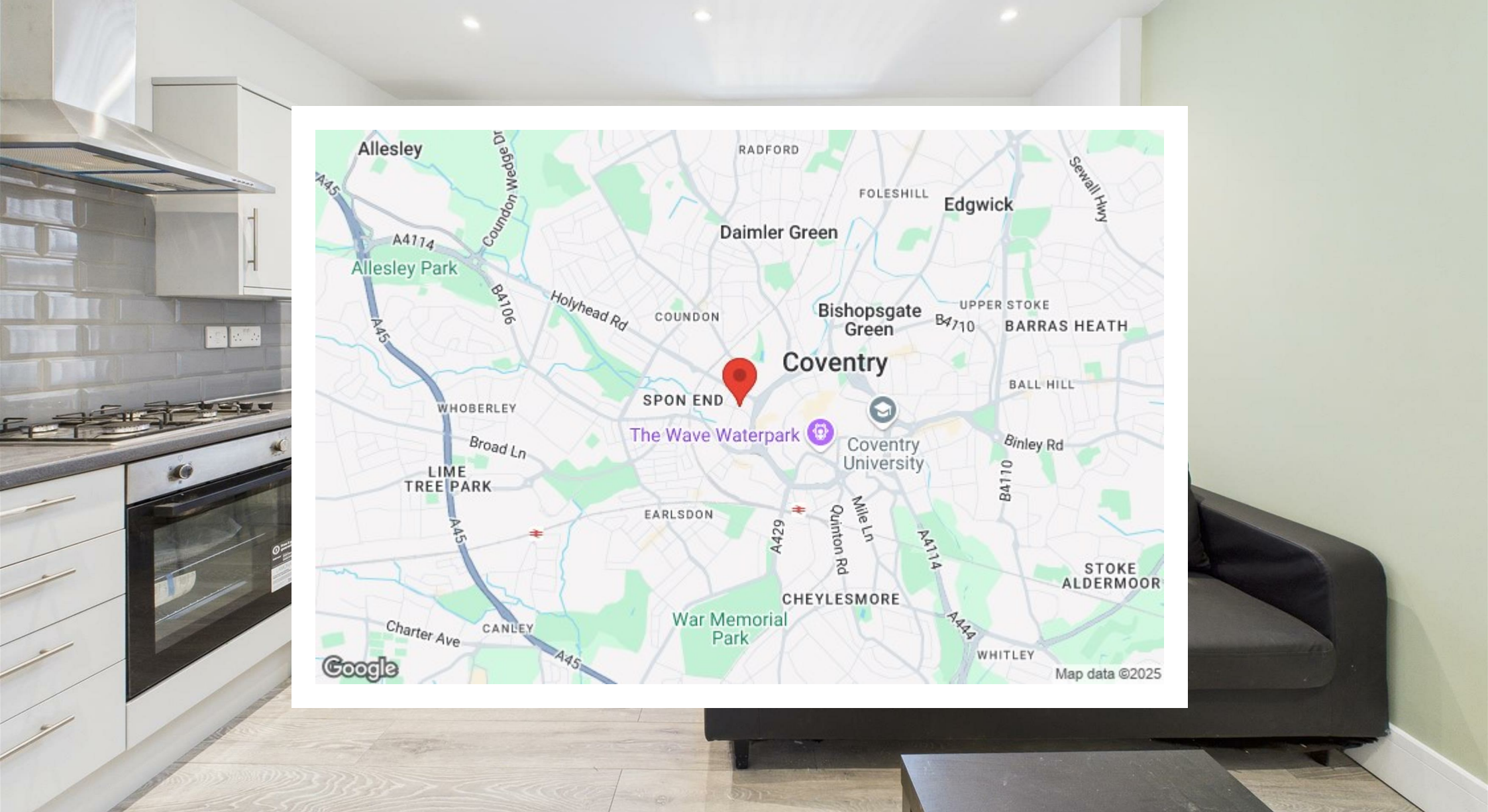
PROMINENCE
ESTATES

Modern 2-Bedroom Apartment with Private Garden – Available Now

Discover this stunning brand new two bedroom apartment, perfectly situated on the first floor and just a short walk to Coventry city centre. Fully furnished and ready for immediate move-in, this stylish home offers spacious living, a modern kitchen, and two bedrooms. Enjoy the luxury of your own private garden, perfect for relaxing or entertaining. With excellent transport links and local amenities nearby, this is an ideal home for professionals or small families. Don't miss out – book a viewing today!







Prominence Estates
5 Queen Isabels Avenue,
Cheylesmore,
Coventry,
CV3 5GE

02476 309 826
lettings@prominenceestates.com
www.prominenceestates.com


PROMINENCE
— ESTATES —