

  
**PROMINENCE**  
ESTATES



**RESIDENTIAL**  
PROPERTY EXPERTS

COVENTRY, WARWICKSHIRE  
& LEAMINGTON SPA

**HUMBER AVENUE,**  
STOKE, COVENTRY, CV1 2AT

**£2,650 PCM**



## HUMBER AVENUE

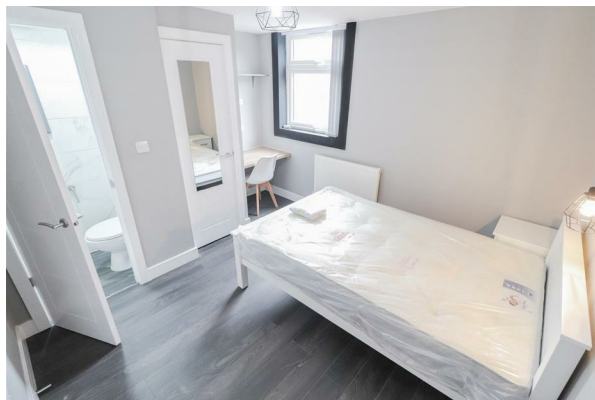


**PROMINENCE**  
— ESTATES —

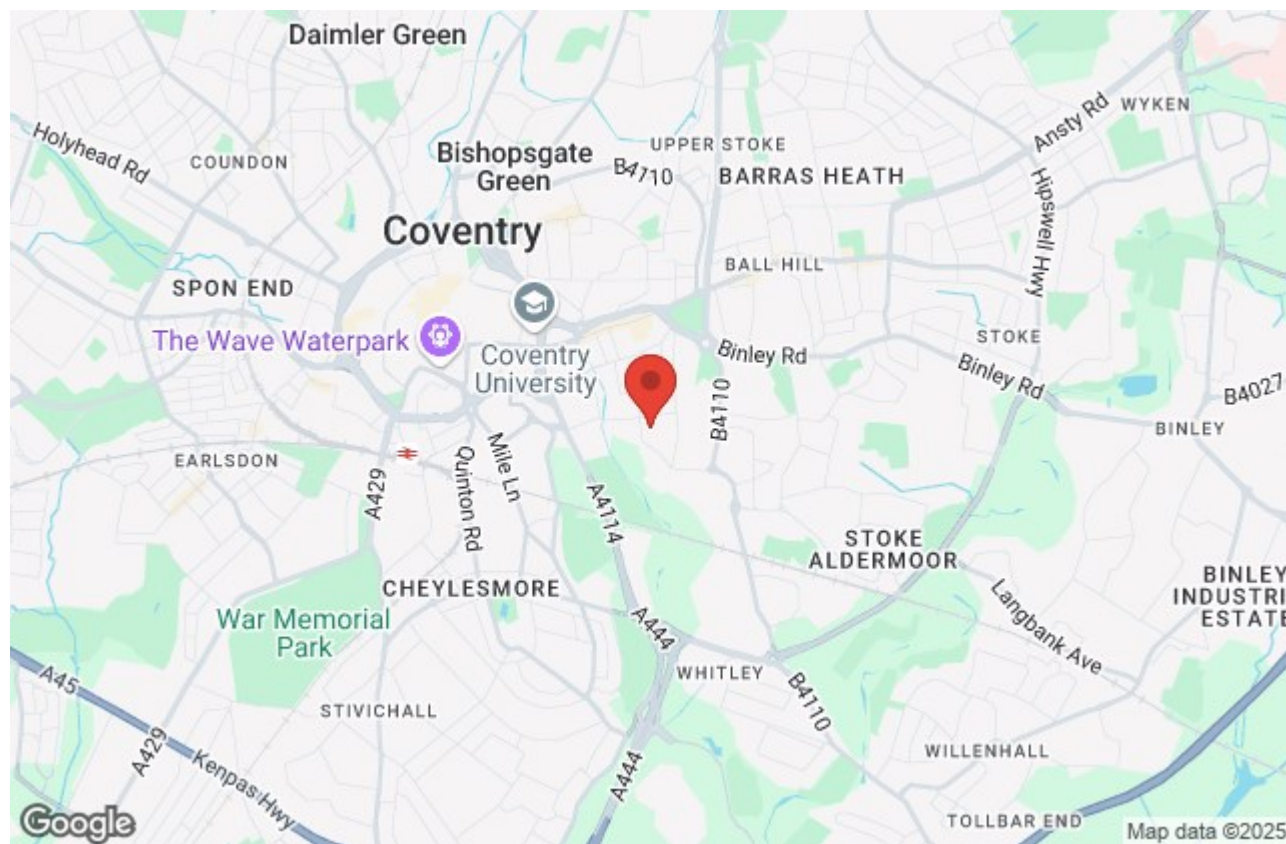
**\*\* Available September 2025\*\*** Modern 5 Bedroom Student House With En-Suite Bedrooms - **BILLS INCLUDED**. This brand new top spec, fully refurbished and luxurious 5 bedroom property is ideal for any student. The property comprises; modern open plan lounge area with LED TV, top spec kitchen, rear garden and en-suite bedrooms. Utility bills included: Gas, Electricity, Water and WiFi.

If you require further information regarding this property or if you would like to arrange for a viewing then please call us on: 02476309826









Prominence Estates  
5 Queen Isabels Avenue,  
Cheylesmore,  
Coventry,  
CV3 5GE

02476 309 826  
[lettings@prominenceestates.com](mailto:lettings@prominenceestates.com)  
[www.prominenceestates.com](http://www.prominenceestates.com)

  
**PROMINENCE**  
— ESTATES —