

  
**PROMINENCE**  
ESTATES



**RESIDENTIAL**  
PROPERTY EXPERTS

COVENTRY, WARWICKSHIRE  
& LEAMINGTON SPA

**SWAN LANE,**  
STOKE, COVENTRY, CV2 4GE

**GUIDE PRICE**  
**£120,000**



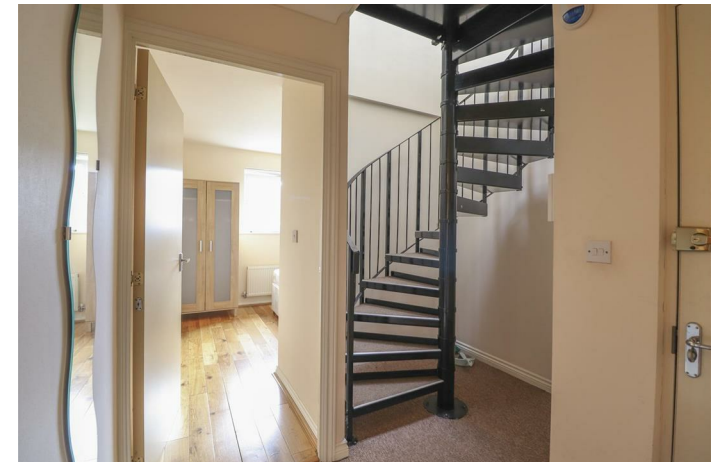
SWAN LANE

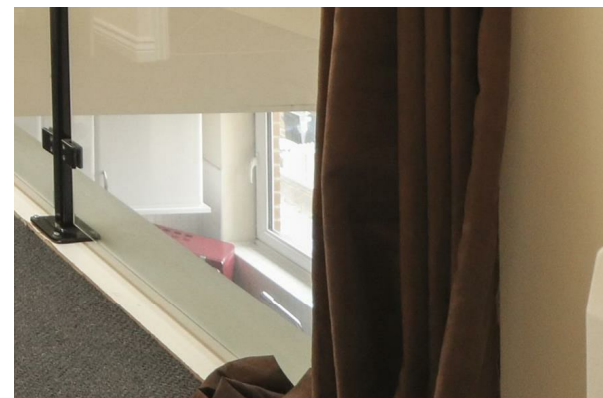
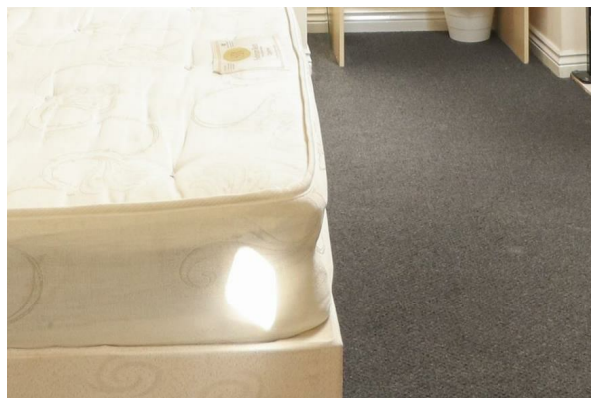


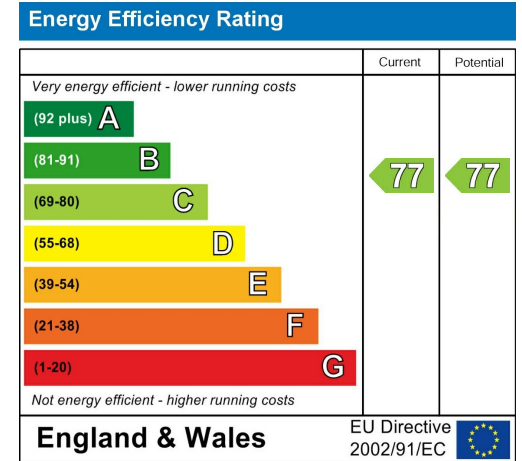
**PROMINENCE**  
— ESTATES —

This spacious 2-bedroom, 2-bathroom apartment is ideally located within walking distance of Coventry City Center, making it a perfect opportunity for investors looking for high rental potential and long-term capital growth.

The property offers a modern open-plan living space with ample natural light, a fully equipped kitchen, and comfortable bedrooms with built-in storage. Both bathrooms are well-appointed, with contemporary fixtures. With its prime location, close to local amenities, shops, restaurants, and public transport links, this apartment is an attractive option for tenants seeking convenience and comfort. Don't miss the chance to add this prime investment property to your portfolio.







Prominence Estates  
5 Queen Isabels Avenue,  
Cheylesmore,  
Coventry,  
CV3 5GE

02476 309 826  
sales@prominenceestates.com  
www.prominenceestates.com

