


PROMINENCE
ESTATES



RESIDENTIAL
PROPERTY EXPERTS

COVENTRY, WARWICKSHIRE
& LEAMINGTON SPA

GULSON ROAD,
STOKE, COVENTRY, CV1 2JD

£3,450 PCM

GULSON ROAD



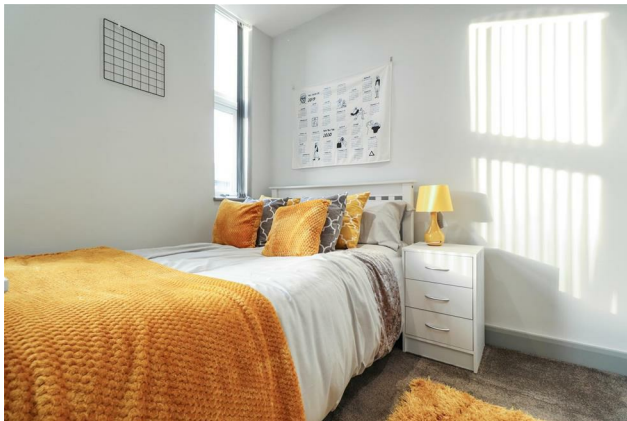
PROMINENCE

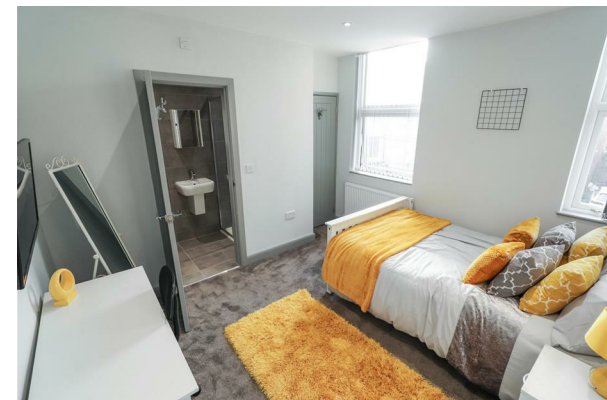
ESTATES

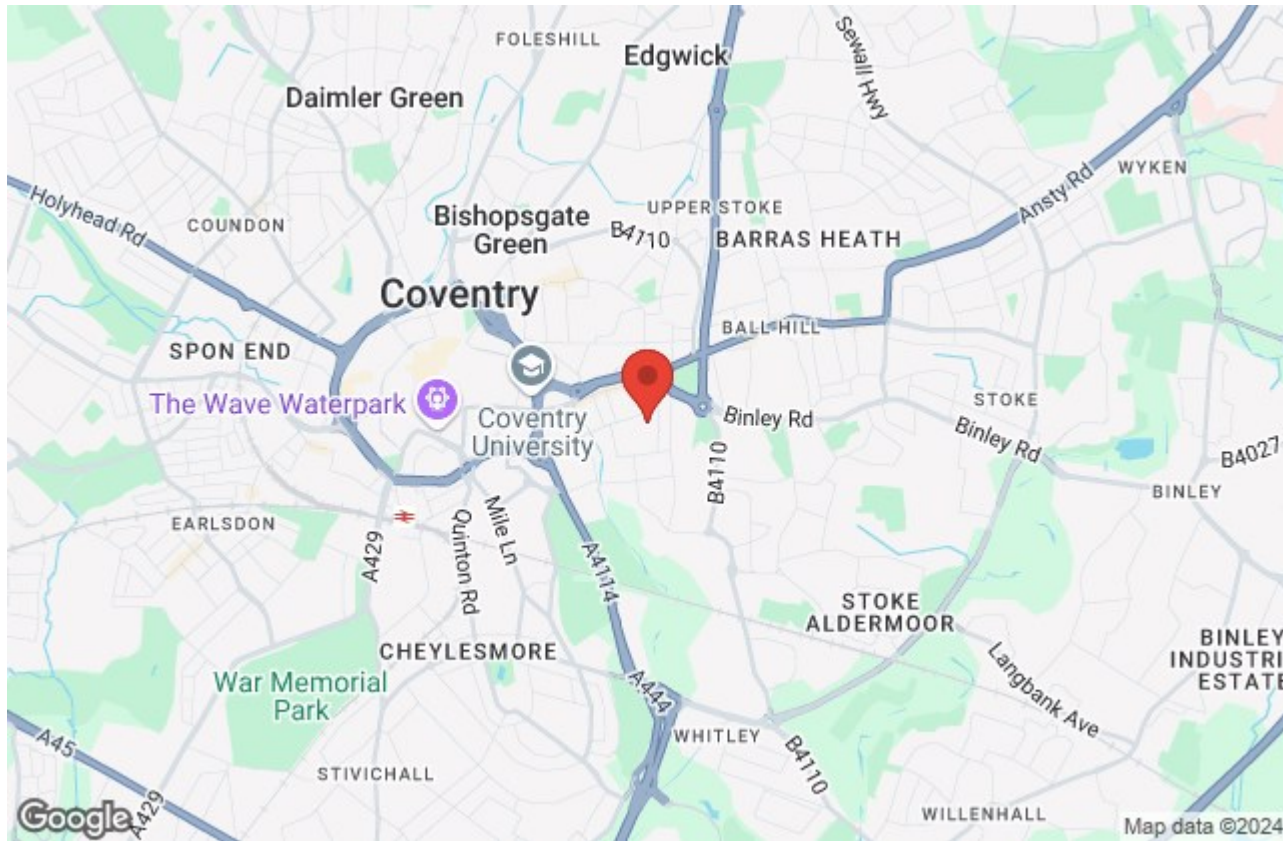
****AVAILABLE FROM SEPTEMBER 2025****
Luxuriously Modern 6 Bedroom Student House With En-Suite Bedrooms. **BILLS INCLUDED + LED TV.** 5 Minutes Walk From University - This is a brand new, top spec and luxurious house which has undergone extensive renovation providing students with a perfect place to live. The property comprises; modern open plan lounge area with LED TV and kitchen benefiting from breakfast bar with stools, 2 integrated microwaves, dish washer, large range cooker, 2 fridge/freezers, washing machine and dryer. The house comes fully furnished with built in wardrobes, beds, desks and chairs. The property also benefits from a low maintenance landscaped garden with artificial lawn and seating area.

For further information regarding this property or to book your viewing please call our Coventry office today.

Utility bills included: Gas, Electricity, Water, WiFi.







Prominence Estates
5 Queen Isabels Avenue,
Cheylesmore,
Coventry,
CV3 5GE

02476 309 826
sales@prominenceestates.com
www.prominenceestates.com


PROMINENCE
ESTATES