


PROMINENCE
ESTATES



RESIDENTIAL
PROPERTY EXPERTS

COVENTRY, WARWICKSHIRE
& LEAMINGTON SPA

THE MARTYRS CLOSE,
CHEYLESMORE, COVENTRY, CV3 5FL

£1,200 PER CALENDAR

THE MARTYRS CLOSE



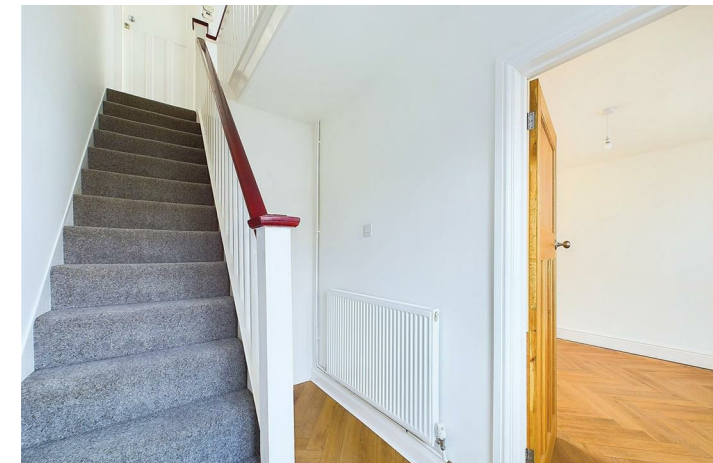
PROMINENCE
ESTATES

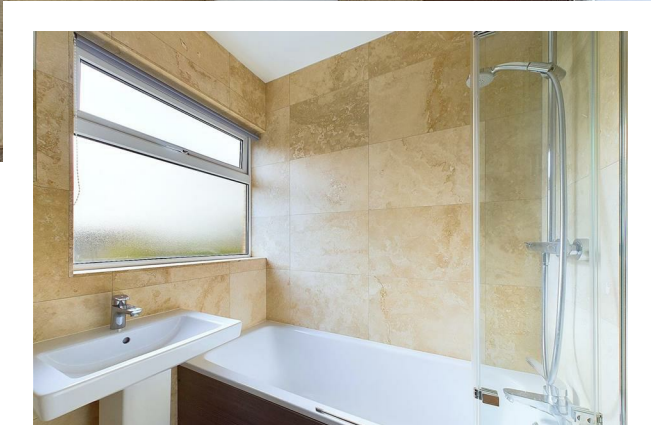
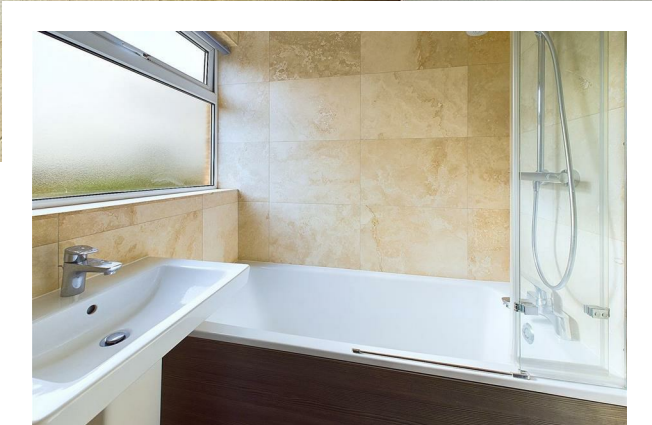
A well presented end of terrace three bedroom family Home with a spacious living/ dining room located in the popular area of Cheylesmore - This beautiful property has most recently been repainted throughout and is exceptionally spacious. The property further benefits from a private and mature rear garden and has great local schools, supermarkets, takeaways and routes into the City Centre and Coventry Train Station. Jaguar Landrover is also within a commutable distance from this property.

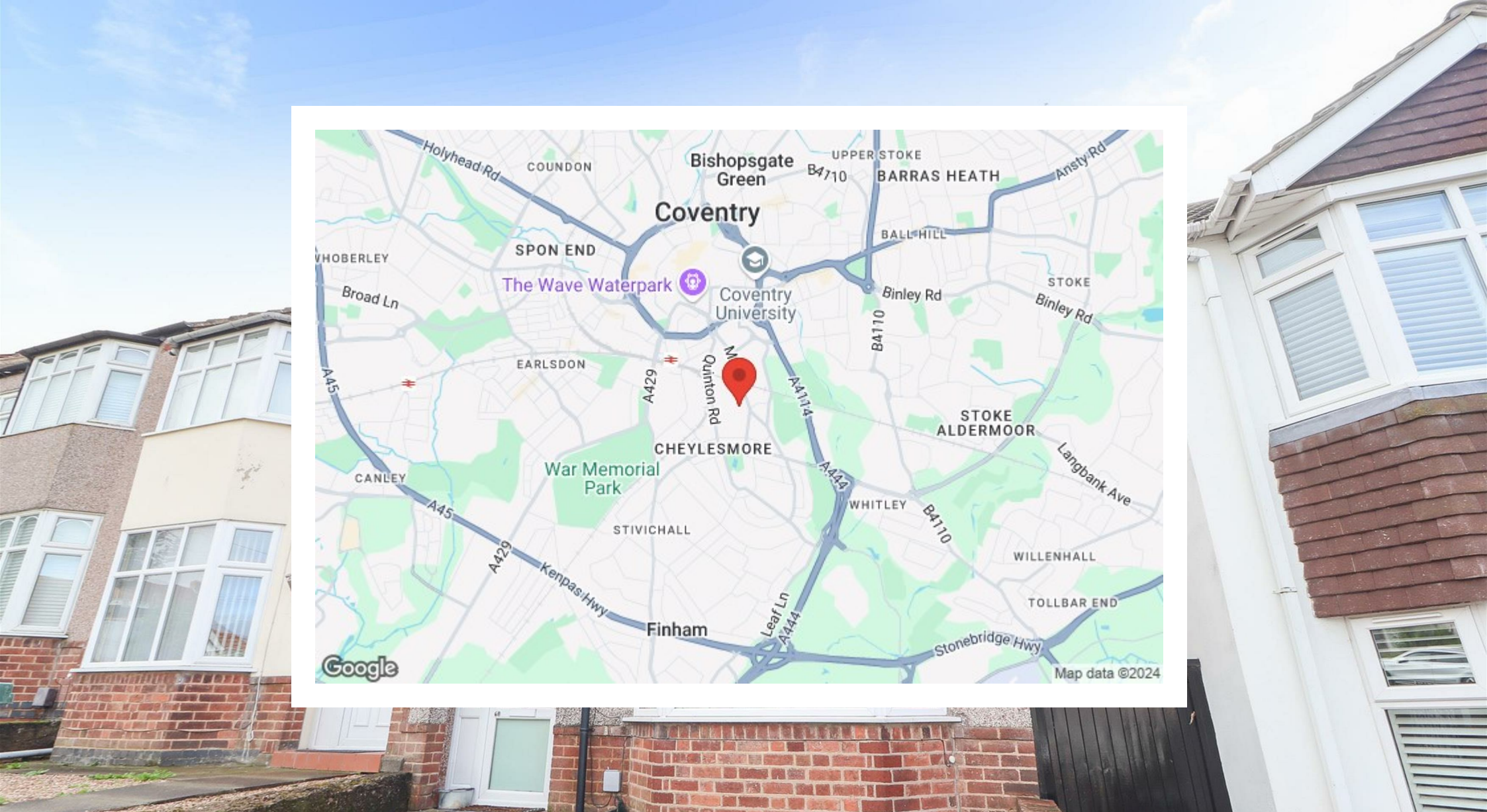
Conveniently located and within walking distance to local amenities such as the Daventry Road parade of shops including Asda supermarket, restaurants, takeaways, doctor's surgery, banks and many more. The property further benefits from easy routes into the City Centre and Coventry Train Station, Jaguar Landrover is also within a commutable distance from the property. This spacious home is perfect for families or working professionals.

Please call our office to make your viewing appointment and to avoid disappointment.

In brief the property comprises of; entrance porch, hallway, spacious through lounge allowing in tonnes of natural light, kitchen with integrated oven and hob. To the first floor, there are two great sized double bedrooms, a smaller single bedroom and a family bathroom.







Prominence Estates
5 Queen Isabels Avenue,
Cheylesmore,
Coventry,
CV3 5GE

02476 309 826
sales@prominenceestates.com
www.prominenceestates.com


PROMINENCE
ESTATES