

  
**PROMINENCE**  
ESTATES



**RESIDENTIAL**  
PROPERTY EXPERTS

COVENTRY, WARWICKSHIRE  
& LEAMINGTON SPA

**RICHMOND STREET,**  
COVENTRY, CV2 4JB

**PER CALENDAR MONTH**  
**£500 PER CALENDAR**



## RICHMOND STREET



# PROMINENCE

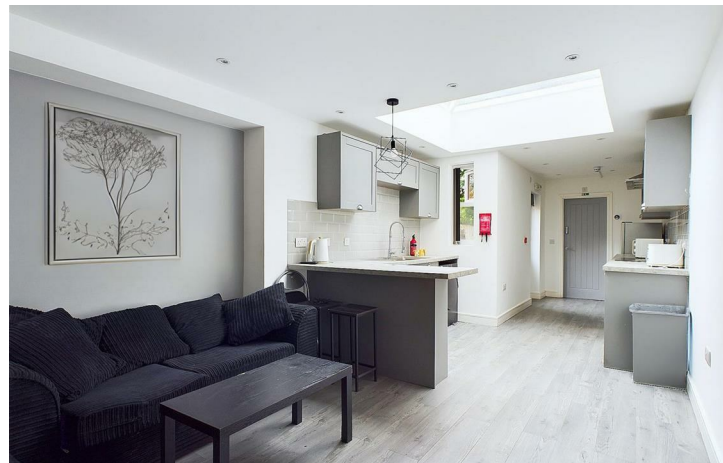
ESTATES

**\*\*25% Off The First Months Rent\*\***We are thrilled to present these amazing, modern En-suite room - **BILLS ARE INCLUDED**. This property is beautifully designed and conveniently located **NEAR COVENTRY CITY CENTRE**, and a short cycle or bus trip to surrounding biggest employers in the city, making this perfect for the working professional. There is also ample free street parking. Many supermarkets, retailers, gyms, etc all within walking distance and there are bus stops only minutes away.

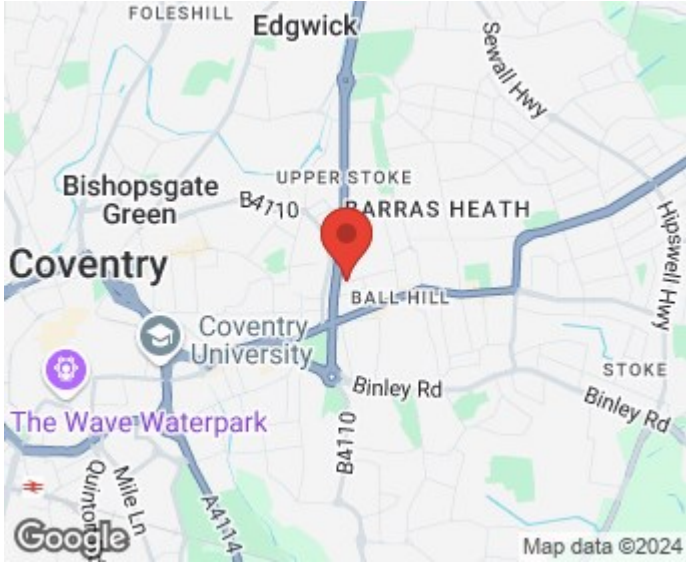
This property is suitable for single occupancy only.




The rooms come fully furnished with modern furniture with plenty of **STORAGE**, including, comfortable bed, wardrobe and desk with a chair. Each room also comes with a modern fitted **PRIVATE en-suite** shower room and a wall-mounted **SMART TV**.







**Energy Efficiency Rating**

	Current	Potential
<i>Very energy efficient - lower running costs</i>		
(92 plus) <b>A</b>		
(81-91) <b>B</b>		
(69-80) <b>C</b>		
(55-68) <b>D</b>		
(39-54) <b>E</b>	50	
(21-38) <b>F</b>		
(1-20) <b>G</b>		
<i>Not energy efficient - higher running costs</i>		
<b>England &amp; Wales</b>	EU Directive 2002/91/EC 	

Prominence Estates  
 5 Queen Isabels Avenue,  
 Cheylesmore,  
 Coventry,  
 CV3 5GE

02476 309 826  
 sales@prominenceestates.com  
 www.prominenceestates.com

