


PROMINENCE
ESTATES



RESIDENTIAL
PROPERTY EXPERTS

COVENTRY, WARWICKSHIRE
& LEAMINGTON SPA

STONEY STANTON ROAD,
COVENTRY, CV6 5GA

£870 PER CALENDAR

STONEY STANTON ROAD

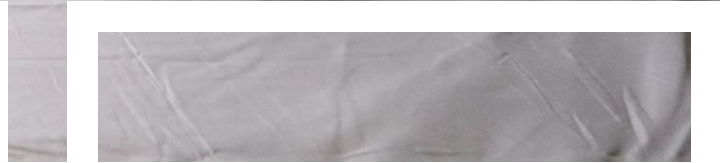
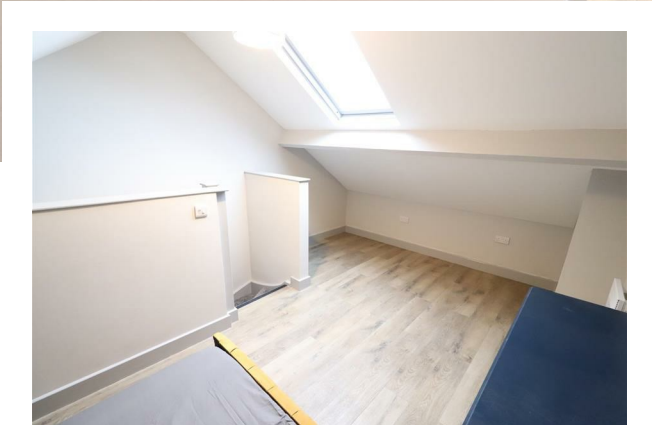


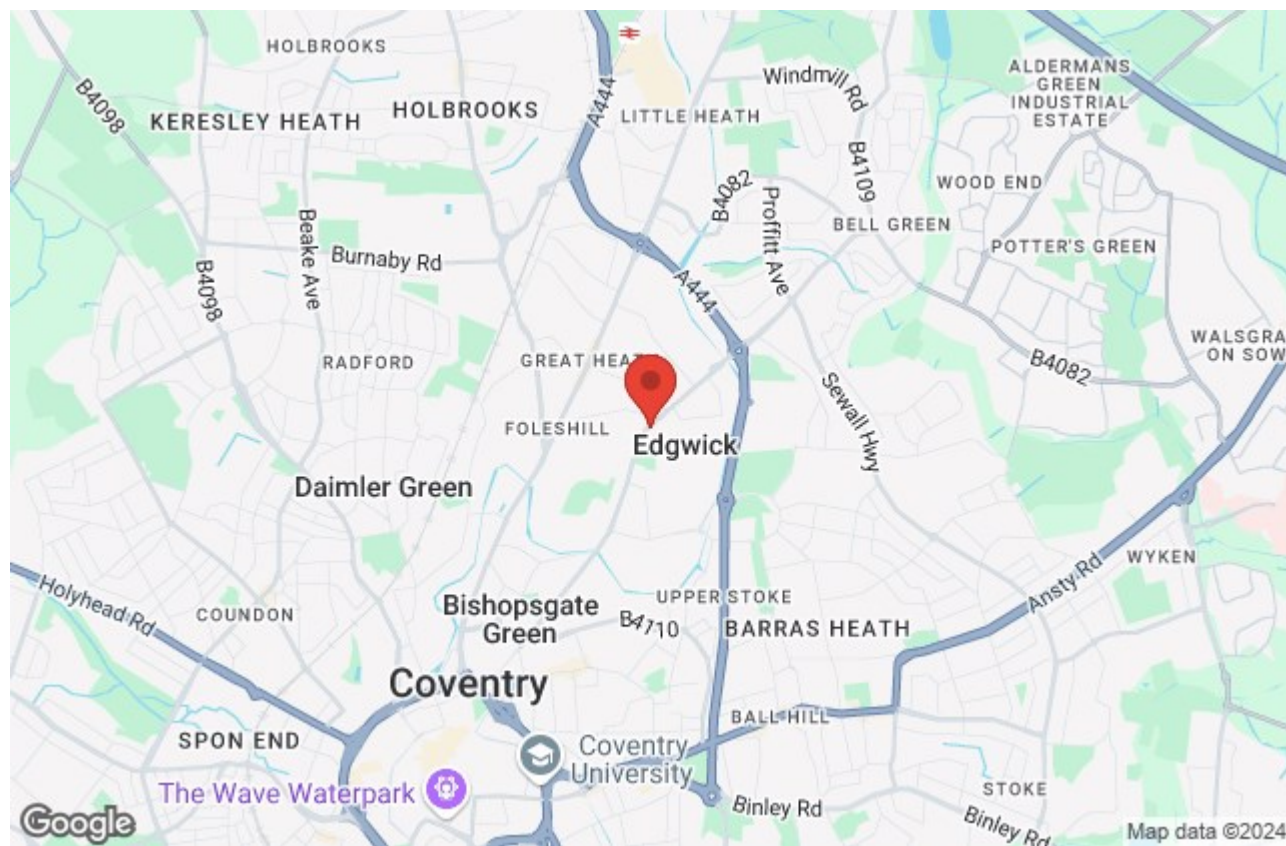
PROMINENCE
ESTATES

**** Located above a beauty salon**** Indulge in contemporary living with this brand new 3-bedroom furnished flat, situated in close proximity to Gallagher Retail Park. The residence offers a perfect blend of style and comfort, featuring modern furnishings and a secure garden for private relaxation. With three bedrooms designed for optimal comfort and convenience, this flat presents an ideal home near the bustling amenities of Gallagher Retail Park. Embrace a lifestyle of convenience and sophistication in this prime location.

To Arrange a viewing please contact Prominence Estates on 02476 309 826.







Prominence Estates
5 Queen Isabels Avenue,
Cheylesmore,
Coventry,
CV3 5GE

02476 309 826
sales@prominenceestates.com
www.prominenceestates.com


PROMINENCE
ESTATES