

  
**PROMINENCE**  
ESTATES



**RESIDENTIAL**  
PROPERTY EXPERTS

COVENTRY, WARWICKSHIRE  
& LEAMINGTON SPA

**MELVILLE ROAD,**  
COVENTRY, CV1 3AL

**£550 PER CALENDAR**

# MELVILLE ROAD



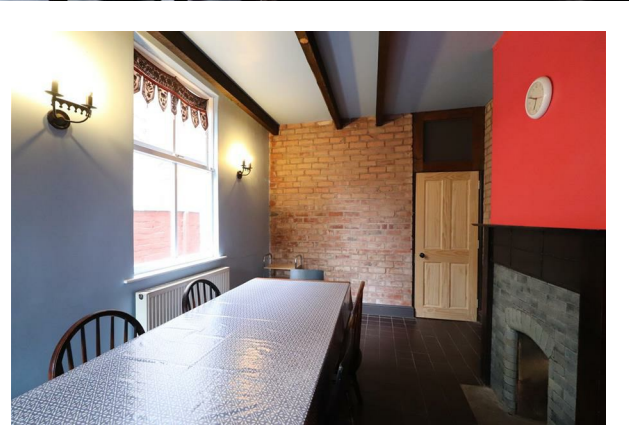
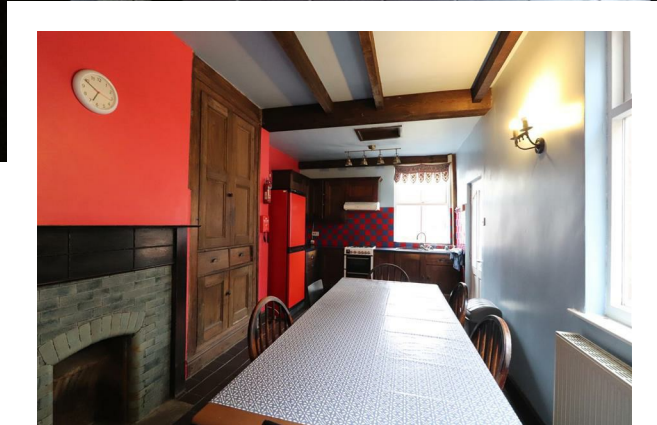
# PROMINENCE

ESTATES

**\*\* Available Now\*\*** Welcome to our furnished 4-bedroom shared house, conveniently located within walking distance of Alvis Retail Park and Coventry City Centre. Ideal for professionals, this home offers comfortable living with two shared bathrooms, ensuring convenience for all residents. With cozy furnishings and a prime location, it's the perfect blend of comfort and accessibility for those seeking a hassle-free lifestyle in Coventry.

Contact Prominence Estates on 02476 309 826 to arrange a viewing.







Prominence Estates  
5 Queen Isabels Avenue,  
Cheylesmore,  
Coventry,  
CV3 5GE

02476 309 826  
sales@prominenceestates.com  
www.prominenceestates.com

  
**PROMINENCE**  
ESTATES