


PROMINENCE
ESTATES



RESIDENTIAL
PROPERTY EXPERTS

COVENTRY, WARWICKSHIRE
& LEAMINGTON SPA

SIR HENRY PARKES ROAD,
CANLEY, COVENTRY, CV4 8GG

£2,250 PCM

SIR HENRY PARKES ROAD

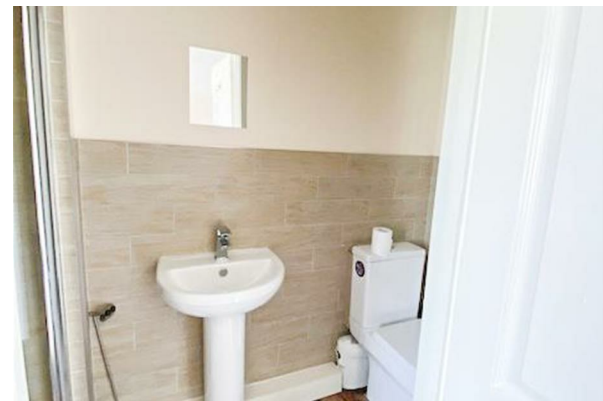
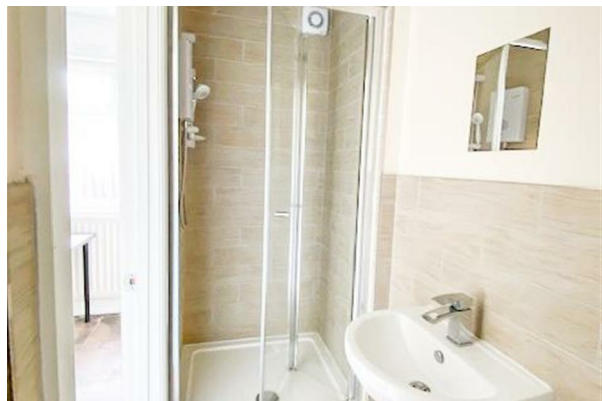


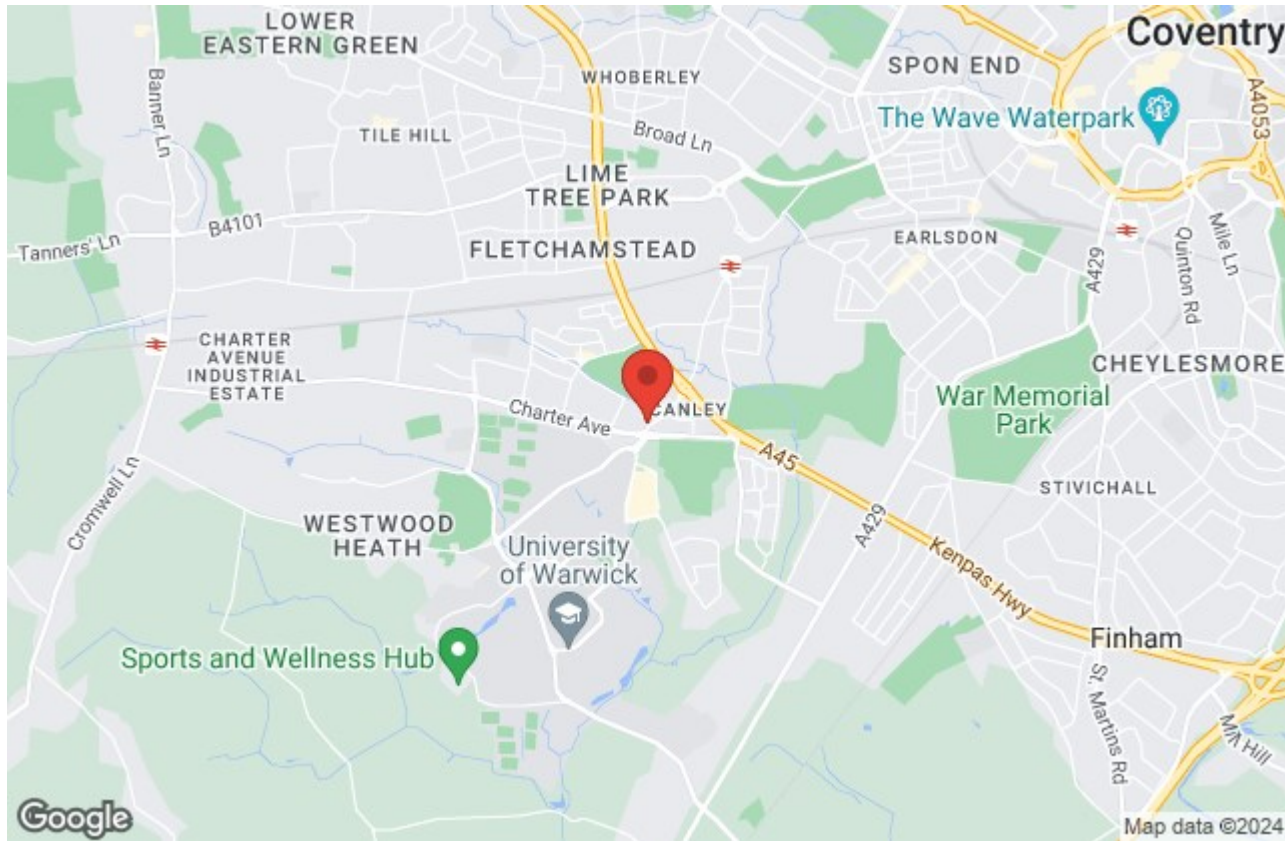
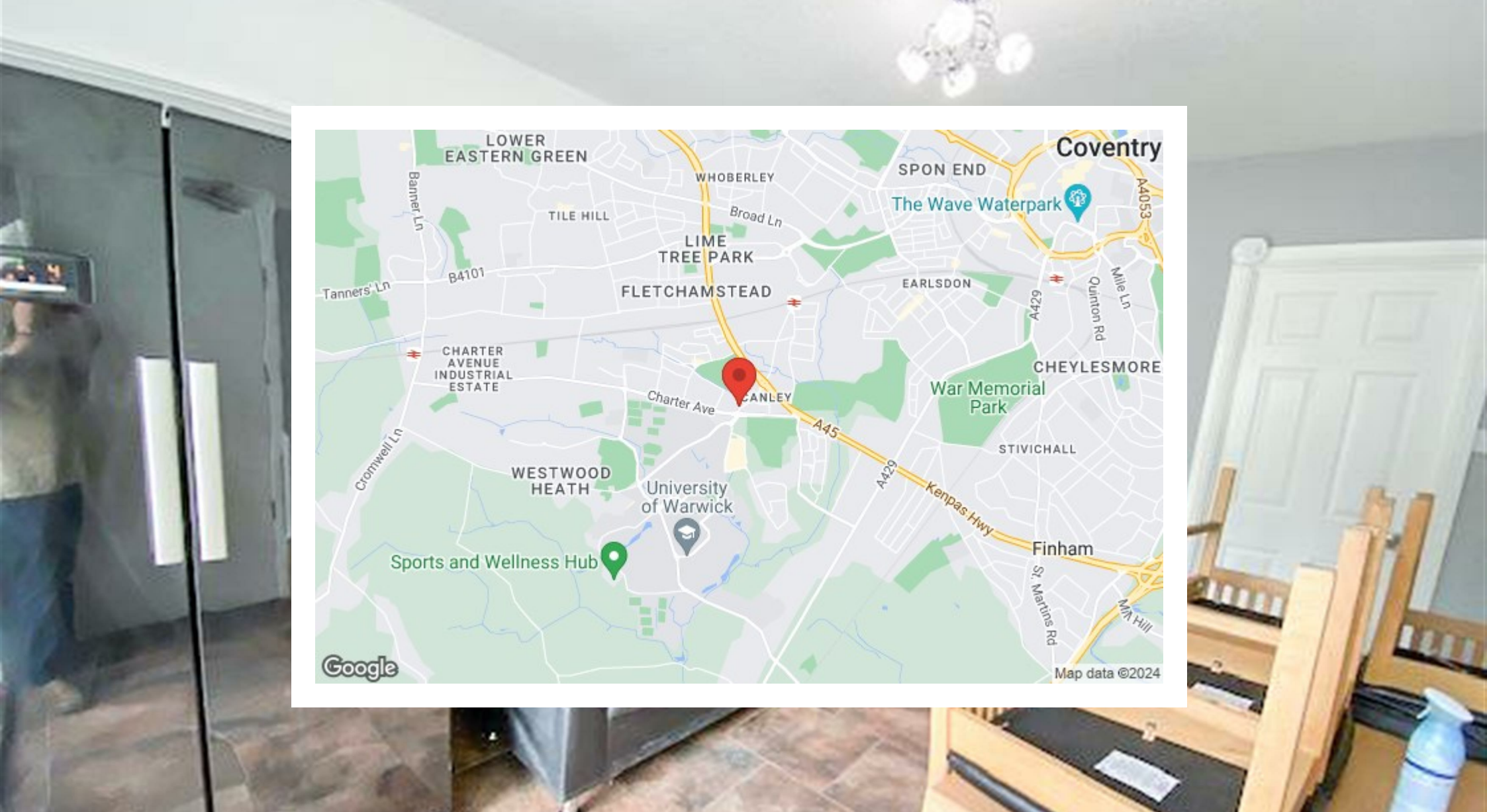
PROMINENCE
ESTATES

**** Bills Not Included **** Five Bedroom Student House Perfect For Warwick University Students, Located Only a Short Walk to University. In brief the property comprises of; entrance hall, ground floor bedroom with en-suite, kitchen and living room, four other bedrooms and a separate bathroom. The property must be viewed to be appreciated.

* Photographs supplied by the landlord







Prominence Estates
5 Queen Isabels Avenue,
Cheylesmore,
Coventry,
CV3 5GE

02476 309 826
sales@prominenceestates.com
www.prominenceestates.com


PROMINENCE
ESTATES